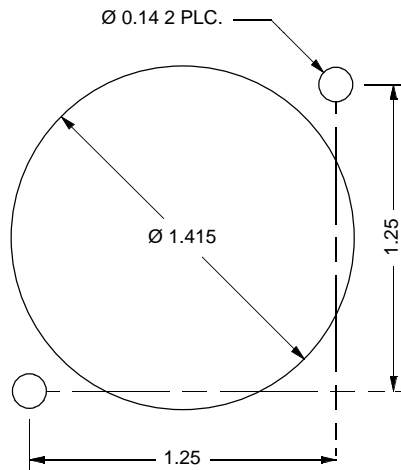
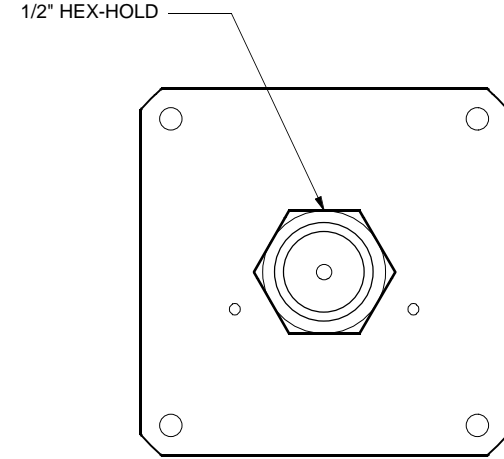
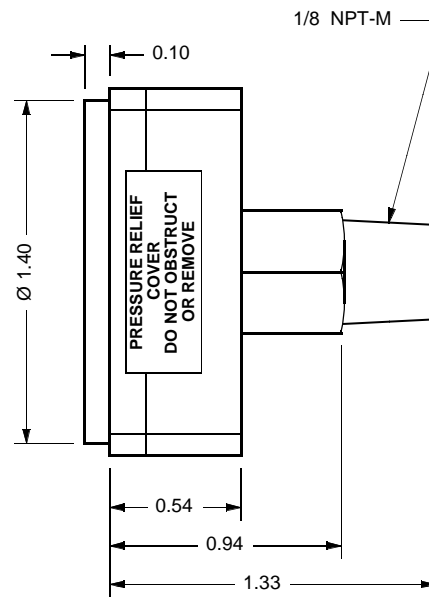
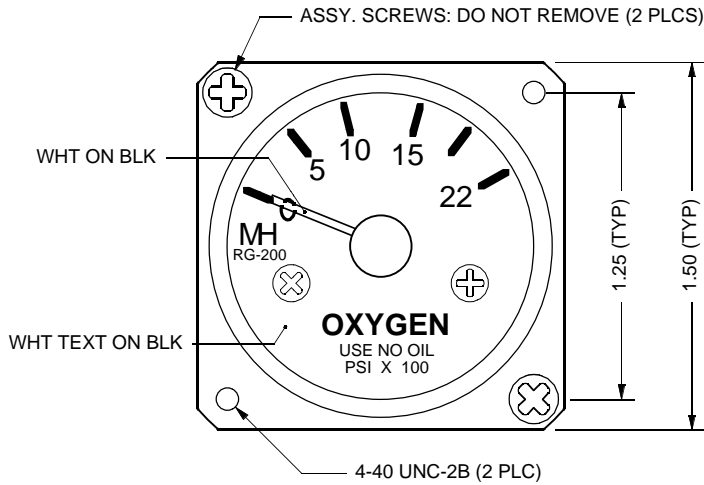


**General Specifications**

Service Gas: Oxygen per MIL-027210, Type 1  
 0-2200 psig (152 bar)  
 Operating Pressure: Main Body 6061-T6 Alum.  
 Construction: Anodize Per MIL-A-8625 Type II  
 Connection Brass (1/8 NPT-M)  
 Safety Factor: 4:1  
 Weight: 2.0 oz Max

REVISION HISTORY			
REV	DATE	E. C. O. / APPR.	NOTES
A	06-02-97	PLM	REVISED TO SHOW NEW DIMENTIONS
B	05-01-00	PLM	REVISED WITH NEW FORMAT
C	12-12-00	PLM	REVISED TO SHOW CORRECT DIAL DETAIL (WAS DWG. NO. E-900105)



Mounting hole template

**FOR REFERENCE ONLY**  
 DO NOT USE FOR PRODUCTION ORDERING

UNLESS OTHERWISE SPECIFIED DIMS ARE IN INCHES. TOLERANCES ARE:		THIRD ANGLE PROJECTION.	<CR> KEY CHARACTERISTICS	NO.
0.X	±0.015	ANGLES	<MA> PER CORP. DOC: ESR-001	
0.XX	±0.010	±0.5°		
0.XXX	±0.005	± 1/64		
INTERPRET GD&T DIMS AND TOLS PER ASME 14.5		63	<b>MH</b> MOUNTAIN HIGH E&S CO. REDMOND, OR. USA	
ISSUED:	09-27-96	1.5" IP TYPE CYL. PRESS. GAUGE		
DRAWN:	PLM 09-27-96	DWG. #: 9500-002		
ENGINEER:	PLM 09-27-96	REV C		
APPR:	DATE	SIZE A SHEET 1 OF 1 DO NOT SCALE DRAWING		