

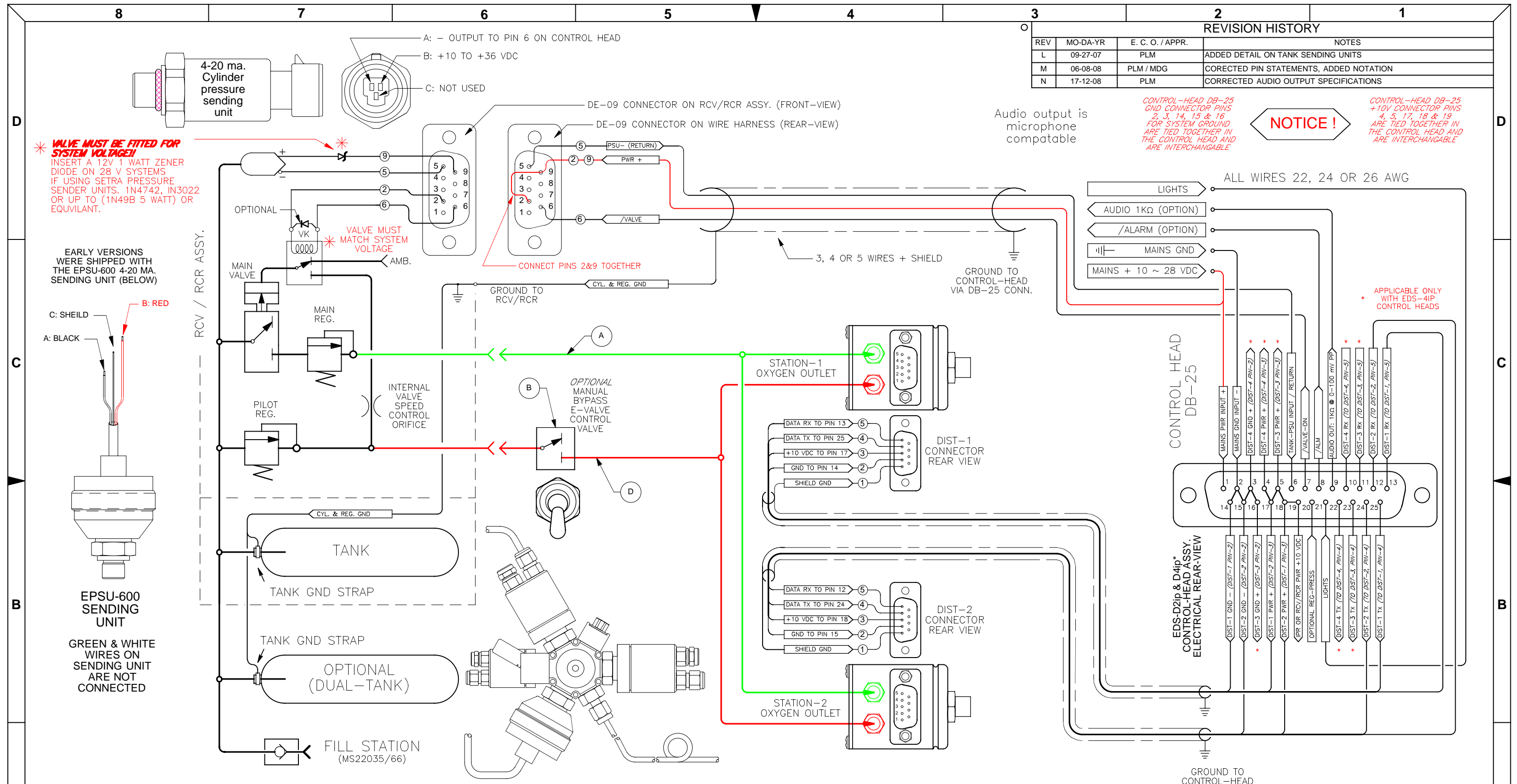
REVISION HISTORY			
REV	MO-DA-YR	E. C. O. / APPR.	NOTES
L	09-27-07	PLM	ADDED DETAIL ON TANK SENDING UNITS
M	06-08-08	PLM / MDG	CORRECTED PIN STATEMENTS, ADDED NOTATION
N	17-12-08	PLM	CORRECTED AUDIO OUTPUT SPECIFICATIONS

NOTICE!

CONTROL-HEAD DB-25 GND CONNECTOR PINS 2, 3, 14, 15 & 16 FOR SYSTEM GROUND ARE TIED TOGETHER IN THE CONTROL HEAD AND ARE INTERCHANGABLE

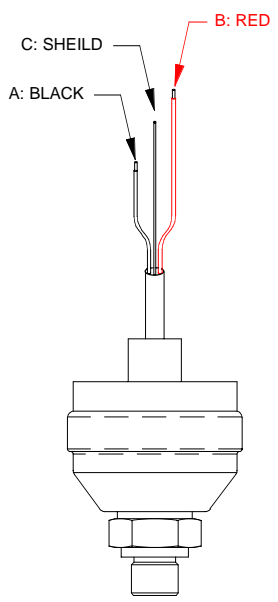
CONTROL-HEAD DB-25 +10V CONNECTOR PINS 4, 5, 17, 18 & 19 ARE TIED TOGETHER IN THE CONTROL HEAD AND ARE INTERCHANGABLE

Audio output is microphone compatible



*** VALVE MUST BE FITTED FOR SYSTEM VOLTAGE!**
 INSERT A 12V 1 WATT ZENER DIODE ON 28 V SYSTEMS IF USING SETRA PRESSURE SENDER UNITS. 1N4742, IN3022 OR UP TO (1N49B 5 WATT) OR EQUIVILANT.

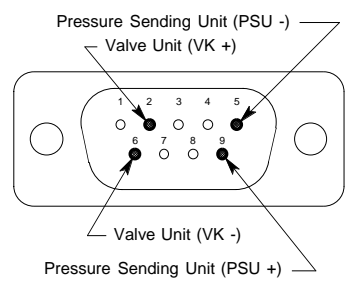
EARLY VERSIONS WERE SHIPPED WITH THE EPSU-600 4-20 MA. SENDING UNIT (BELOW)



GREEN & WHITE WIRES ON SENDING UNIT ARE NOT CONNECTED

- (A) SWITCHED: 6-10 mm. MAIN REG. 1 BAR (15 PSIG)
- (B) MANUAL EMERGENCY OXYGEN BYPASS OXYGEN CONTRL
- (C) SWITCHED: 4.0 mm. MAIN REG. 1 BAR (15 PSIG)
- (D) SWITCHED: 4.0 mm. E-REG. REG. 2 BAR (32 PSIG)

DE-09 RECOMMENDED PIN ASSIGNMENT RCV / RCR ASSY.	Pressure Sending Unit (PSU -) Valve Unit (VK +)
1	-
2	VK POWER +
3	-
4	-
5	PSU RETURN -
6	VK POWER -
7	-
8	-
9	PSU POWER +



DE-09 PIN ASSIGNMENT DIST UNITS.	DIST-1 CONNECTOR REAR VIEW	DIST-2 CONNECTOR REAR VIEW
1	DIST-SHIELD	DATA RX TO PIN 13
2	DIST POWER -	DATA TX TO PIN 25
3	DIST POWER +	+10 VDC TO PIN 17
4	DIST TX	GND TO PIN 14
5	DIST RX	SHIELD GND
6	N/C	
7	N/C	
8	N/C	
9	N/C	

2ip & 4ip

THIRD ANGLE PROJECTION

RCV/RCR

POWERED EXTERNALLY

ISSUED:	MO-DA-YR	2/4IP ELCTRO-PNEUMATIC SCHEM
DRAWN: PLM	11-10-00	DWG. #: EDSIP-050-001
ENGINEER: PLM	DATE	REV N
APPR:	DATE	SIZE B SHEET 1 OF 1 DO NOT SCALE DRAWING