

4

3

2

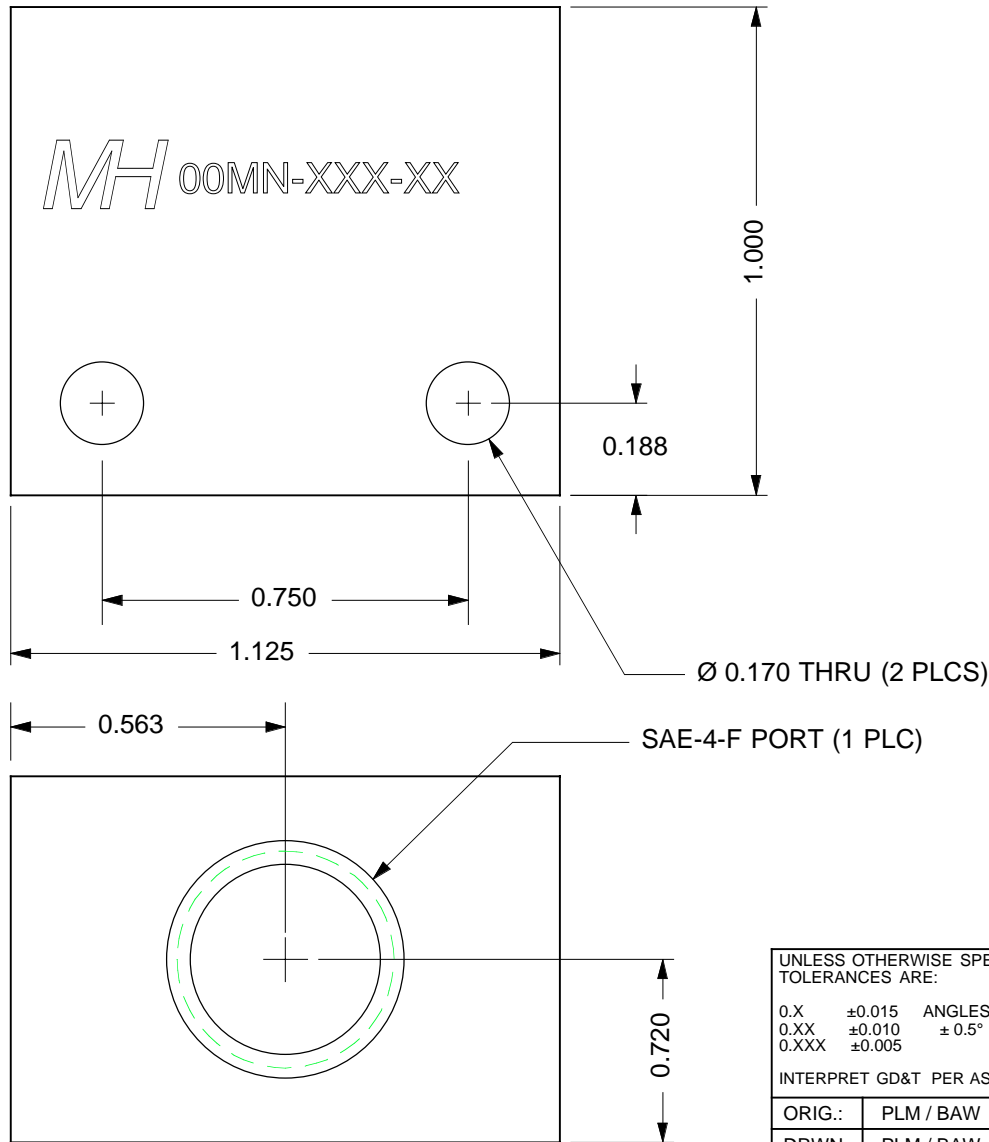
1

NOTES:
 UNLESS OTHERWISE SPECIFIED IN THE QR OR PO, THE FOLLOWING SHALL APPLY

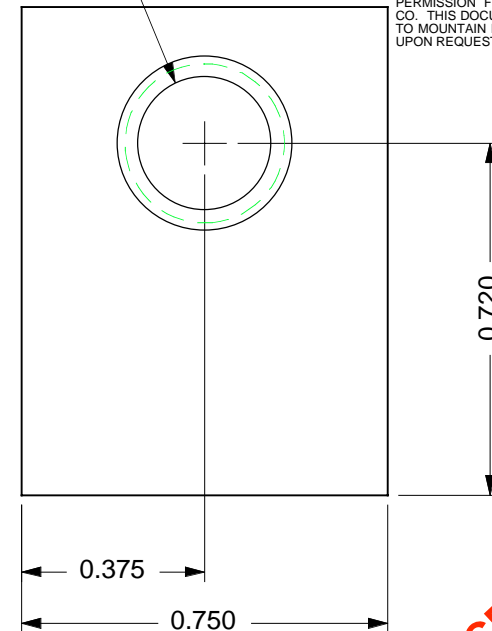
1. MATERIAL: A96061, ASTM B209 6061-T651 ALUMINUM.
2. FINISH: ANODIZE PER MIL-A-8625 TYPE II, CLASS 2 GREEN
3. CLEAN: PER IN HOUSE DOCUMENT: ESR-008
4. MARKING: PER IN-HOUSE DOCUMENT ESR-005

REVISION HISTORY				
REV	MO-DA-YR	ECO NUM	NAME	NOTES
-	11-15-98		PLM / BAW	INITIAL DRAFT
A	06-23-07	PLM	PLM	UPGRADED TO NEW FORMAT
B	07-07-07	PLM	PLM	ADDED PART MARKING DETAIL

REMOVE ALL BURRS & SHARP EDGES



SAE-2-F PORT (2 PLCS)



THIS DOCUMENT AND ALL TECHNICAL DATA HEREON DISCLOSED ARE PROPERTY OF MOUNTAIN HIGH E&S CO. AND SHALL NOT BE USED, RELEASED OR DISCLOSED IN WHOLE OR PART WITHOUT WRITTEN PERMISSION FROM MOUNTAIN HIGH E&S CO. THIS DOCUMENT MUST BE RETURNED TO MOUNTAIN HIGH E&S CO. IMMEDIATELY UPON REQUEST.

SOURCE CONTROL DOCUMENT FOR REFERENCE ONLY

UNLESS OTHERWISE SPECIFIED DIMS ARE IN INCHES. TOLERANCES ARE:				THIRD ANGLE PROJECTION		MOUNTAIN HIGH E&S CO. REDMOND, OR. USA	
0.X	±0.015	ANGLES	FRACTIONS	63	DO NOT SCALE DRAWING	[KC] 00	NUMBER OF KEY CHARACTERISTICS IN THIS DRAWING / DOCUMENT PER MH DOC: ESR-001
0.XX	±0.010	± 0.5°	± 1/64	✓			
0.XXX	±0.005						
INTERPRET GD&T PER ASME 14.5				FMT REV G		SCD: TEE MANIFOLD. SAE -2 X -2 X -4	
ORIG.:	PLM / BAW	11-15-98	MATERIAL:	NOTE 1	DWG. # 0ST02-050-000		
DRWN.:	PLM / BAW	11-15-98	FINISH:	NOTE 2	REV A	SIZE A	
ENG.:	PLM / BAW	11-15-98	CLEAN:	NOTE 3	INV PART NUMBER		CAT ITEM NUMBER
APPR.:	NAME	MO-DA-YR	MARKING:	NOTE 4	SHEET 1 OF 1		CUSTOMER CODE

4

3

2

1

D

C

B

A

D

C

B

A