

REVISION HISTORY		NOTES	
REV	MOD-DA-YR	REV / ECO #	APPR
-	06-22-07	N/A	PLM
			INITIAL DRAFT

**A:** OUTPUT TO GAUGE  
**B:** +10 to +36 VDC  
**C:** NOT USED

PIN 03 FOR USE WITH 14V PRESSURE SENDING UNITS ONLY

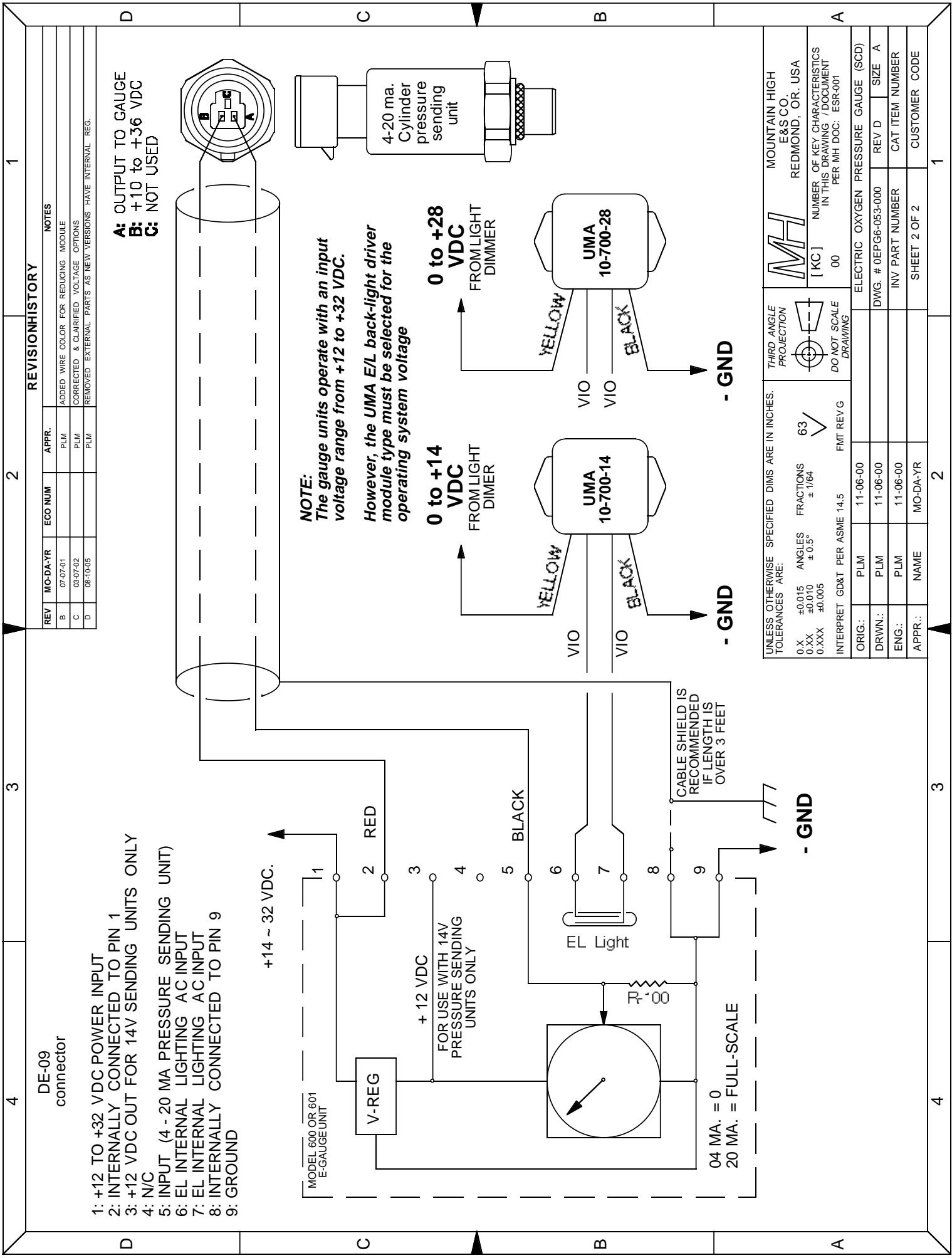
CABLE SHIELD IS RECOMMENDED IF LENGTH IS OVER 3 FEET

DE-09 CONNECTOR ON GAUGE BACK

- 1: +12 TO +32 VDC POWER INPUT
- 2: INTERNALLY CONNECTED TO PIN 1
- 3: +12 VDC OUT FOR 14V SENDING UNITS ONLY
- 4: N/C
- 5: INPUT (4 - 20 MA PRESSURE SENDING UNIT)
- 6: EL INTERNAL LIGHTING AC INPUT
- 7: EL INTERNAL LIGHTING AC INPUT
- 8: INTERNALLY CONNECTED TO PIN 9
- 9: GROUND

UNLESS OTHERWISE SPECIFIED DIMS ARE IN INCHES. TOLERANCES ARE:		THIRD ANGLE PROJECTION	MOUNTAIN HIGH E&S CO. REDMOND, OR. USA
0.X ±0.015	ANGLES ±0.5°		[KC] NUMBER OF KEY CHARACTERISTICS IN THIS DRAWING / DOCUMENT PER NH DOC: ESR-001
0.XX ±0.010	FRACTIONS ± 1/64	DO NOT SCALE DRAWING	00
0.XXX ±0.005	INTERPRET GD&T PER ASME 14.5	FMT REV/G	ELECT. OXYGEN PRESSURE GAUGE E/L CONFIG
	ORIG.: SBW / PLM	06-22-07	DWG. # 0EPG6-053-000
	DRWN.: SBW / PLM	06-22-07	REV -
	ENG.: SBW / PLM	06-22-07	CAT ITEM NUMBER
	APPR.: NAME	MO-DA-YR	SHEET 1 OF 2
			CUSTOMER CODE

**NOTE:**  
 The gauge units operate with an input voltage range from +12 to +32 VDC.  
 However, the UMA E/L back-light driver module type must be selected for the operating system voltage



- 1: +12 TO +32 VDC POWER INPUT
- 2: INTERNALLY CONNECTED TO PIN 1
- 3: +12 VDC OUT FOR 14V SENDING UNITS ONLY
- 4: N/C
- 5: INPUT (4 - 20 MA PRESSURE SENDING UNIT)
- 6: EL INTERNAL LIGHTING AC INPUT
- 7: EL INTERNAL LIGHTING AC INPUT
- 8: INTERNALLY CONNECTED TO PIN 9
- 9: GROUND

**NOTE:**  
 The gauge units operate with an input voltage range from +12 to +32 VDC.  
 However, the UMA E/L back-light driver module type must be selected for the operating system voltage

0 to +14 VDC  
 FROM LIGHT DIMMER

0 to +28 VDC  
 FROM LIGHT DIMMER

CABLE SHIELD IS RECOMMENDED IF LENGTH IS OVER 3 FEET

04 MA. = 0  
 20 MA. = FULL-SCALE

REVISION HISTORY				
REV	MO-DA-YR	ECO NUM	APPR.	NOTES
B	07-07-01		PLM	ADDED WIRE COLOR FOR REDUCING MODULE
C	03-07-02		PLM	CORRECTED & CLARIFIED VOLTAGE OPTIONS
D	08-10-05		PLM	REMOVED EXTERNAL PARTS AS NEW VERSIONS HAVE INTERNAL REG.

**A:** OUTPUT TO GAUGE  
**B:** +10 to +36 VDC  
**C:** NOT USED

UNLESS OTHERWISE SPECIFIED DIMS ARE IN INCHES. TOLERANCES ARE:		THIRD ANGLE PROJECTION		MOUNTAIN HIGH E&S CO. REDMOND, OR. USA	
0.X	±0.015	ANGLES	±0.5°	[KC]	NUMBER OF KEY CHARACTERISTICS IN THIS DRAWING / DOCUMENT PER MH DOC: ESR-001
0.XX	±0.010	FRACTIONS	± 1/64	00	ELECTRIC OXYGEN PRESSURE GAUGE (SCD)
0.XXX	±0.005	INTERPRET GD&T PER ASME 14.5	FMT REV/G		DWG. # 0EFG6-053-000
					REV D
					SIZE
					CAT ITEM NUMBER
					INV PART NUMBER
					SHEET 2 OF 2
					CUSTOMER CODE