

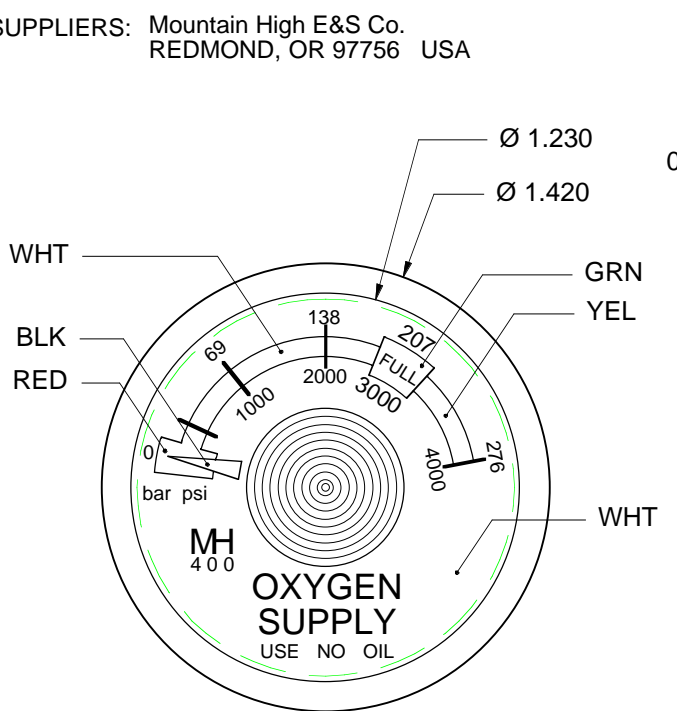
REVISION HISTORY (version roll-offs are kept on file)				
REV	MO-DA-YR	NEO / ECO	NAME	NOTES
-	04-26-96			INITIAL DRAFT
A	01-28-09		PLM	CORRECTED TEXT ON SCALE & PLACED ON NEW FORMAT

**NOTES:**  
**UNLESS OTHERWISE SPECIFIED IN THE QR OR PO, THE FOLLOWING SHALL APPLY**

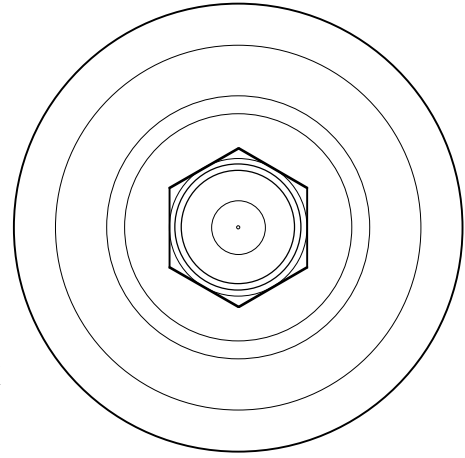
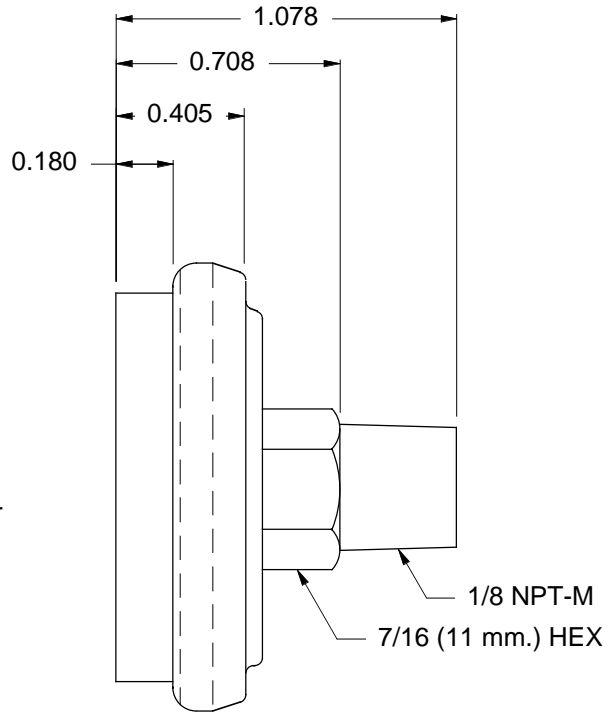
- ⚠ MATERIAL: WETTED PARTS: C36000, ASTM B16 (CDA-360 BRASS)
  - ⚠ FINISH: NONE
  - ⚠ CLEAN: PER IN HOUSE DOCUMENT: ESR-008
  - ⚠ MARKING: PER IN-HOUSE DOCUMENT ESR-005
- REMOVE ALL BURRS & SHARP EDGES**

**NOTES:**  
 1. MFG: MIJA INDUSTRIES  
 35 Resnik Road, Plymouth Industrial Park  
 Plymouth, MA, 02360

2. SUPPLIERS: Mountain High E&S Co.  
 REDMOND, OR 97756 USA



TEXT ON DIAL IS BLK ON WHT



**GENERAL SPECIFICATIONS**

MATERIAL: BRASS, SS & Acrylic  
 MAX PRESSURE: 276 bar (4000 PSIG.)  
 OPERATING RANGE: 207 bar (0-3000 PSIG.)  
 SAFETY FACTOR: 3;1  
 PORT: 1/8 NPT-M  
 TEMP RANGE: -25°F TO 225°F

UNLESS OTHERWISE SPECIFIED DIMS ARE IN INCHES. TOLERANCES ARE:				THIRD ANGLE PROJECTION		MOUNTAIN HIGH E&S CO. REDMOND, OR. USA			
0.X	±0.015	ANGLES	FRACTIONS	63	DO NOT SCALE DRAWING	[ KC ]	NUMBER OF KEY CHARACTERISTICS IN THIS DRAWING / DOCUMENT PER MH DOC. ESR-001		
0.XX	±0.010	± 0.5°	± 1/64	✓					
0.XXX	±0.005								
INTERPRET GD&T PER ASME 14.5				FMT REV H					
ORIGINAL MO-DA-YR	PLM, 04-26-96	MATERIAL	⚠	DWG. TITLE PRESSURE GAUGE: 1.25" 1/8 NPT REAR-MOUNT					
ENGINEER MO-DA-YR	PLM, 04-26-96	FINISH	⚠	DWG. NUMBER	9500-004	DWG. REVISION	REV -	DWG. SIZE	A
DRAWN MO-DA-YR	PLM, 04-26-96	CLEAN	⚠	CAD FILE NUMBER	9500-004: MH-400 (SCD)		DWG. SHEETS	1 OF 1	
CHECKED MO-DA-YR	-	MARKING	⚠	INV. PART NUMBER	00CPG-1011-00	CAT ITEM NUMBER	0-		