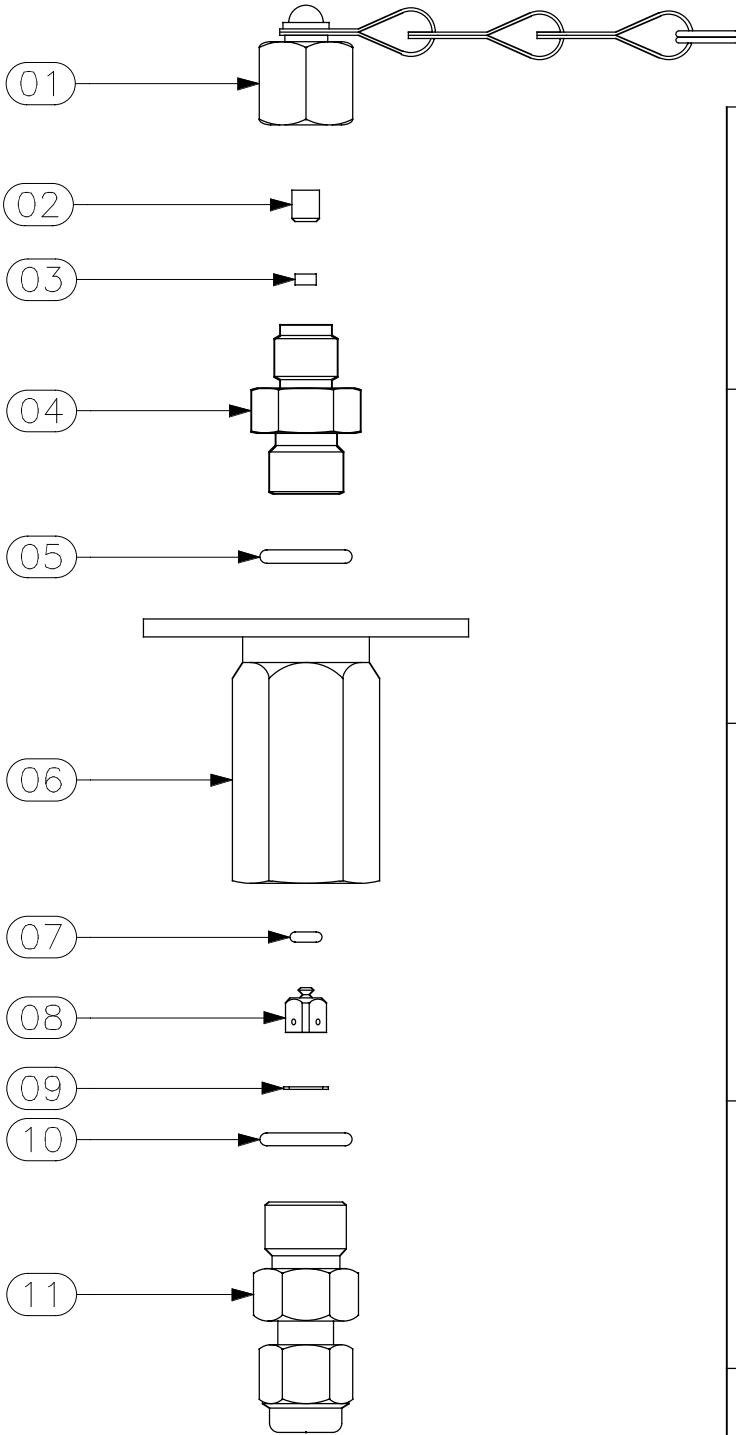


THIS DOCUMENT AND ALL TECHNICAL DATA HEREON DISCLOSED ARE PROPERTY OF MOUNTAIN HIGH E&S CO. AND SHALL NOT BE USED, RELEASED OR DISCLOSED IN WHOLE OR PART WITHOUT WRITTEN PERMISSION FROM MOUNTAIN HIGH E&S CO. THIS DOCUMENT MUST BE RETURNED TO MOUNTAIN HIGH E&S CO. IMMEDIATELY UPON REQUEST.

REVISION HISTORY

REV	MO-DA-YR	E. C. O. / APPR.	NOTES
IR	02-08-06	SBW	INITIAL RELEASE
A	11-07-06	SBW	ADD COMPONENTS AND P/Ns
B	06-20-07	PLM	ARESTATED SILICONE COMP FOR O-RING IN POPPET



REF	QTY	DWG / PART NO.	DESCRIPTION	VENDOR	VENDOR / P / N
01	1	OCP01-0100-00	CAP & CHAIN ASSEMBLY		
02	1	OCV02-0203-00	SETScrew, HOLLOW		
03	1	09025-0002-00	FILTER	GENISIS	13500-.125-105
04	1	OCV02-0257-00	AN800 / SAE-4 ADAPTER		
05	1	09001-0904-75	O-RING	AOP	3-904-V75
06	1	OCV04-0304-00	BODY,BULKHEAD		
07	1	09001-1003-70	2-003-S70, O-RING	AOP	2-003-V75
08	1	OCV02-0201-00	POPPET, CK VALVE		
09	1	090007-0001-00	RETAINING RING	GENISIS	13500-.125-105
10	1	09001-0904-75	2-904-E75, O-RING	AOP	3-904-V75
11	1	00HDW-0108-00	TUBE FITTING	PORTLAND VALVE	B-200-1-BR

THIRD ANGLE PROJECTION.		[KC] 00	NUMBER OF KEY CHARACTERISTICS IN THIS DRAWING / DOCUMENT PER MH DOC: ESR-001
ISSUED: SBW 02-08-06		FILL STATION BLKHD, AN800 x 1/8 TUBE	
DRAWN: SBW 02-08-06		DWG. #: 00BLT-1022-01	
ENGINEER: DATE		REV A	
APPR: DATE		SIZE A	SHEET 1 OF 1
DO NOT SCALE DRAWING			