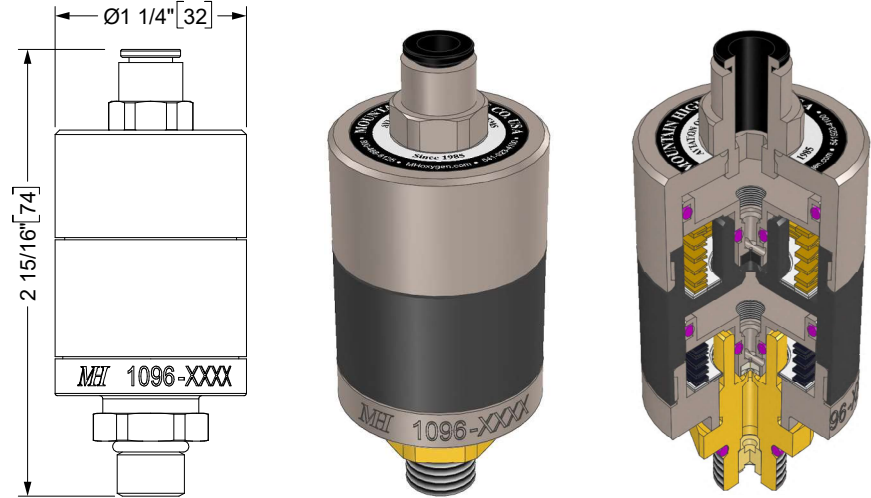
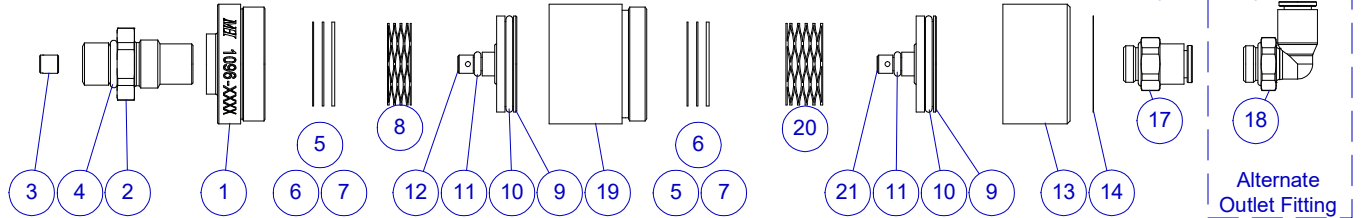


REF	1096-04	1096-06	Description
1	1	1	Inlet Body
2	1	1	Inlet Seat, SAE-4
3	1	1	Filter
4	1	1	O-Ring (SAE-4)
5	A/R	A/R	Shim, .010
6	A/R	A/R	Shim, .016
7	A/R	A/R	Shim, .030
8	1	1	Spring
9	2	2	Piston
10	2	2	O-Ring
11	2	2	O-Ring
12	1	1	Puck (HP)
13	1	1	Outlet Body, Axial
14	1	1	Label
15	1		Outlet Fitting, 4mm tube, Straight
16	1		Outlet Fitting, 4mm tube, 90° Elbow
17		1	Outlet Fitting, 6mm tube, Straight
18		1	Outlet Fitting, 6mm tube, 90° Elbow
19	1	1	Center Body, 2-Stage Reg
20	1	1	Spring
21	1	1	Puck (LP)



**GENERAL SPECIFICATIONS**

Material: UNS C36000 (CDA-360) Brass  
 UNS A96061 (6061-T6) Aluminum

Inlet Pressure Rating: 3000 PSI MAX  
 Regulated Outlet: 16 ± 2 PSI (Dynamic) (NOM 1 Bar)  
 20 ± 2 PSI (Static)

Average Flow Rate: 40 L/min (AVG)  
 Temperature Range: -50°F to +130°F [-45°C to +55°C]

Inlet Fitting: SAE-4M  
 Replacement O-ring: MH p/n 09001-1904-70 (SAE-4, Item #4)

<b>1096-04:</b>	Outlet Fitting	Weight
<b>1096-06:</b>	G-1/8 BSPP x 4mm Tube	3.1 oz [88 g]
	G-1/8 BSPP x 6mm Tube	3.1 oz [88 g]

UNLESS OTHERWISE SPECIFIED, DIMENSIONS ARE IN INCHES. TOLERANCES ARE: 0.X ±0.015 0.XX ±0.010 0.XXX ±0.005		ANGLES ± 3° FRACTIONS ± 1/64	
INTERPRET GD&T PER ASME 14.5		63	
THIRD ANGLE PROJECTION	DRAWN SGO 2018-08-09	MOUNTAIN HIGH E&S CO. REDMOND, OR. USA	
CHECKED	ENGINEER	THIS DOCUMENT AND ALL TECHNICAL DATA HEREON DISCLOSED ARE PROPERTY OF MOUNTAIN HIGH E&S CO. AND SHALL NOT BE USED, RELEASED OR DISCLOSED IN WHOLE OR PART WITHOUT WRITTEN PERMISSION FROM MOUNTAIN HIGH E&S CO. THIS DOCUMENT MUST BE RETURNED TO MOUNTAIN HIGH E&S CO. IMMEDIATELY UPON REQUEST.	
APPROVED	DWG NUMBER <b>5SREG-1096-0x</b>	Regulator, 2-Stage Axial, No Gauge, SAE-4M x Tube Outlet [SCD]	
DO NOT SCALE DRAWING	CAD FILE 00REG-1092*1096-xx\$-3	INV. PART NUMBER 00REG-1096-04	DWG REV. <b>-3</b>
	DWG FORMAT: ESR-002 Rev H [20]	PROD. NAME XCR-SAE-2SA-1P-4mm EOS-SAE-2SA-1P-6mm	DWG SHEET 1 OF 1
	DWG SCALE	DWG SIZE 11x8 1/2	