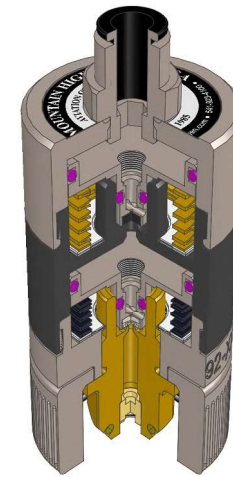
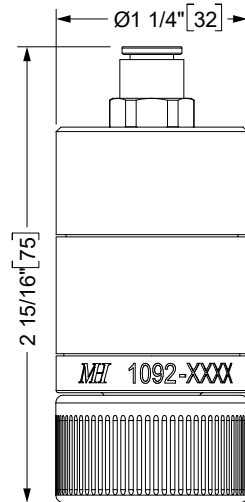
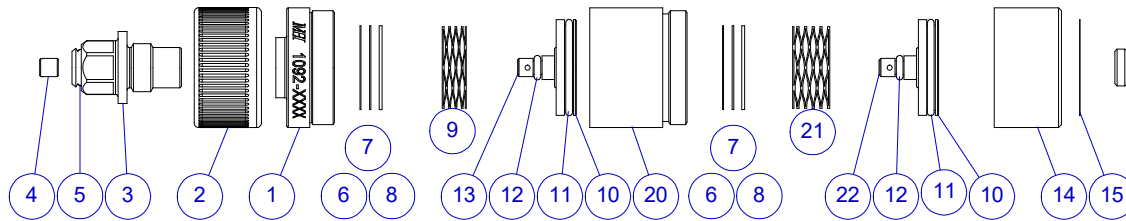


REF	1092-04	1092-06	Description
1	1	1	Inlet Body
2	1	1	Grip-Nut, CGA-540
3	1	1	Inlet Seat, CGA-540
4	1	1	Filter
5	2	2	O-Ring (CGA-540N)
6	A/R	A/R	Shim, .010
7	A/R	A/R	Shim, .016
8	A/R	A/R	Shim, .030
9	1	1	Spring
10	2	2	Piston
11	2	2	O-Ring
12	2	2	O-Ring
13	1	1	Puck (HP)
14	1	1	Outlet Body, Axial
15	1	1	Label
16	1		Outlet Fitting, 4mm tube, Straight
17	1		Outlet Fitting, 4mm tube, 90° Elbow
18		1	Outlet Fitting, 6mm tube, Straight
19		1	Outlet Fitting, 6mm tube, 90° Elbow
20	1	1	Center Body, 2-Stage Reg
21	1	1	Spring
22	1	1	Puck (LP)



GENERAL SPECIFICATIONS

Materials: UNS C36000 (CDA-360) Brass
UNS A96061 (6061-T6) Aluminum

Inlet Pressure Rating: 3000 PSI MAX
Regulated Outlet: 16 ± 2 PSI (Dynamic) (NOM 1 Bar)
20 ± 2 PSI (Static)

Average Flow Rate: 40 L/min (AVG)
Temperature Range: -50°F to +130°F [-45°C to +55°C]

Inlet Fitting: CGA-540N
Spare O-ring: MH p/n 09001-0010-75 (CGA-540, Item #5)

1092-04:	<u>Outlet Fitting</u>	<u>Weight</u>
1092-06:	G-1/8 BSPP x 4mm Tube	3.9 oz [112 g]
	G-1/8 BSPP x 6mm Tube	3.9 oz [112 g]

UNLESS OTHERWISE SPECIFIED, DIMENSIONS ARE IN INCHES. TOLERANCES ARE: 0.X ±0.015 0.XX ±0.010 0.XXX ±0.005		ANGLES ± 3° FRACTIONS ± 1/64		MOUNTAIN HIGH E&S CO. REDMOND, OR. USA	
INTERPRET GD&T PER ASME 14.5		THIRD ANGLE PROJECTION		THIS DOCUMENT AND ALL TECHNICAL DATA HEREON DISCLOSED ARE PROPERTY OF MOUNTAIN HIGH E&S CO. AND SHALL NOT BE USED, RELEASED OR DISCLOSED IN WHOLE OR PART WITHOUT WRITTEN PERMISSION FROM MOUNTAIN HIGH E&S CO. THIS DOCUMENT MUST BE RETURNED TO MOUNTAIN HIGH E&S CO. IMMEDIATELY UPON REQUEST.	
DRAWN SGO 2018-08-09		DWG TITLE Regulator, 2-Stage Axial, No Gauge, CGA-540N x Tube Outlet [SCD]		DWG NUMBER 5SREG-1092-0x	
CHECKED		DWG NUMBER		DWG REV. -3	
ENGINEER		CAD FILE 00REG-1092*1096-xx\$-3		INV. PART NUMBER 00REG-1092-04 00REG-1092-06	
APPROVED		DWG FORMAT: ESR-002 Rev H [20]		PROD. NAME XCR-CGA-2SA-1P-4mm EOS-CGA-2SA-1P-6mm	
DO NOT SCALE DRAWING		DWG SCALE		DWG SHEET 1 OF 1 SIZE A 11x8 1/2	