

REV	ECO	Release	Drawn	REVISION HISTORY
G0	2017-001	2017-02-27	SGO	Customer Drawing

**GENERAL SPECIFICATIONS**

Material: UNS C36000 (CDA-360) Brass  
 UNS A96061 (6061-T6) Aluminum

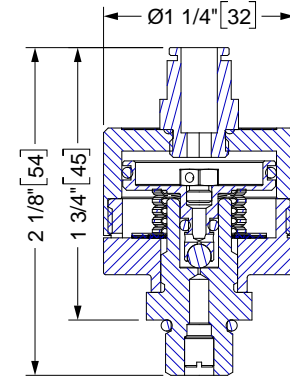
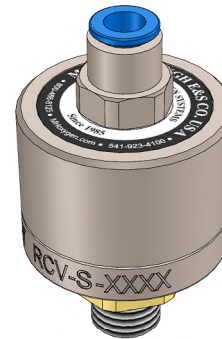
Weight: 2.3 oz [65 g]

Inlet Fitting: SAE-4 [7/16-20]  
 Outlet Fitting: G-1/8 BSPP x 6mm Tube

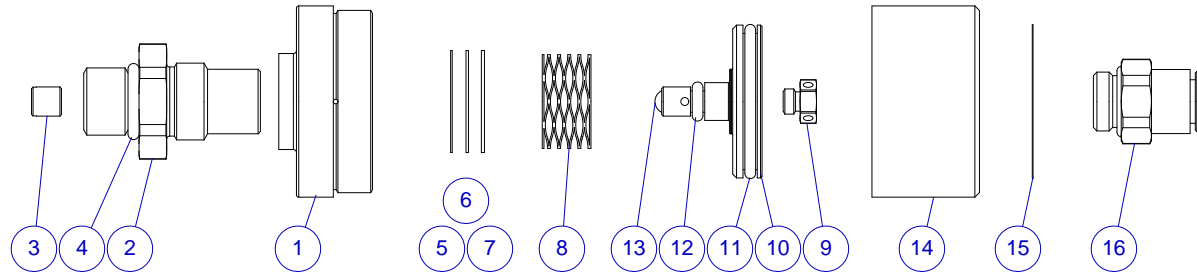
Inlet Pressure Rating: 3000 PSI MAX

Regulated Outlet: 18 ± 2 PSI (NOM 1 Bar)  
 Average Flow Rate: 40 L/min

Temperature Range: -50°F to +130°F [-45°C to +55°C]



REF	Qty	Description
1	1	Inlet Body
2	1	Inlet Seat, SAE-4
3	1	Filter
4	1	O-Ring
5	A/R	Shim, .010
6	A/R	Shim, .016
7	A/R	Shim, .020
8	1	Spring
9	1	Diffuser
10	1	Piston
11	1	O-Ring
12	1	O-Ring
13	1	Ball
14	1	Outlet Body Axial
15	1	Label
16	1	Outlet Fitting, 6mm tube, Straight



UNLESS OTHERWISE SPECIFIED, DIMENSIONS ARE IN INCHES. TOLERANCES ARE:  
 0.X ±0.015  
 0.XX ±0.010  
 0.XXX ±0.005

ANGLES ± 3°  
 FRACTIONS ± 1/8

INTERPRET GD&T PER ASME 14.5

THIRD ANGLE PROJECTION

DO NOT SCALE DRAWING

**MH MOUNTAIN HIGH E&S CO. REDMOND, OR. USA**

THIS DOCUMENT AND ALL TECHNICAL DATA HEREON DISCLOSED ARE PROPERTY OF MOUNTAIN HIGH E&S CO. AND SHALL NOT BE USED, RELEASED OR DISCLOSED IN WHOLE OR PART WITHOUT WRITTEN PERMISSION FROM MOUNTAIN HIGH E&S CO. THIS DOCUMENT MUST BE RETURNED TO MOUNTAIN HIGH E&S CO. IMMEDIATELY UPON REQUEST.

RCV Service Regulator,  
 SAE-4 x 6mm Tube, Axial [SCD]

DWG TITLE: **5SRCV-0101-00**

DWG NUMBER: **5SRCV-0101-00**

CAD FILE: ARGX2-0101-00\$GO

DWG FORMAT: ESR-002 Rev H [17]

DWG SCALE: 1 OF 1

DWG SHEET: 1 OF 1

DWG SIZE: A 11x8 1/2

DWG REV: **G0**

PROD. NAME: RCVS-SAE4-1P-A