

1

2

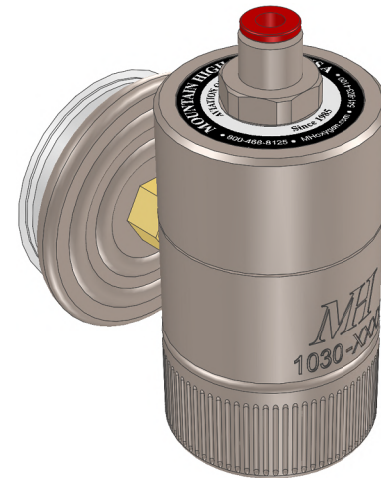
3

4

REV	ECO	Release	Drawn	REVISION HISTORY
M0	2018-023	2018-08-16	SGO	Product Insert Drawing

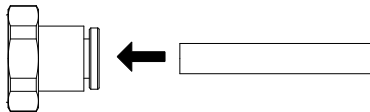
DO NOT ATTEMPT TO REMOVE REGULATOR FROM CYLINDER WHILE UNDER PRESSURE!

The regulator grip-nut will be difficult to turn while under pressure, and doing so will destroy the regulator inlet O-ring. Bleed-off pressure by closing the main cylinder valve and then disconnect the outlet tubing from the regulator.



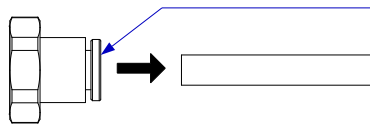
TUBING CONNECTION

INSERTING



Push in the tubing

REMOVING



1. Push in the connector collar
2. Pull the tube straight back while holding the collar in

To INSERT TUBING: push the tubing into the connector until resistance is felt, then push a little further, about 1/8 inch [3 mm]. Gently tug on the tubing to make sure it is captured.

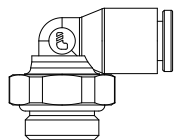
To REMOVE TUBING: push the tubing in slightly, then push in the connector collar while pulling gently on the tubing.

When removing tubing, **DO NOT pull on the tubing without pushing in the collar**, as this will likely damage the connector.

GENERAL SPECIFICATIONS

Material:	UNS C36000 (CDA-360) Brass UNS A96061 (6061-T6) Aluminum
Weight:	5 oz [144 g]
Inlet Fitting:	CGA-540N
Outlet Fitting:	G-1/8 BSPP x 4mm Tube
Inlet Pressure Rating:	2400 PSI MAX
Regulated Outlet:	16 ± 2 PSI (Dynamic) (NOM 1 Bar) 20 ± 2 PSI (Static)
Average Flow Rate:	40 L/min
Temperature Range:	-50°F to +130°F [-45°C to +55°C]
Spare O-ring:	MH p/n 09001-0011-90 (CGA-540)
See also:	MH document 5SREG-1030-00

D



Note: Alternate outlet fitting provided.

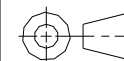
- Replace installed fitting as preferred.
- Maintain cleanliness for oxygen service.
- Torque to 20 in-lbs.
- No Teflon tape required.

UNLESS OTHERWISE SPECIFIED, DIMENSIONS ARE IN INCHES. TOLERANCES ARE:
0.X ±0.015
0.XX ±0.010
0.XXX ±0.005

ANGLES ± 3°
FRACTIONS ± 1/64

INTERPRET GD&T PER ASME 14.5

THIRD ANGLE PROJECTION



DO NOT SCALE DRAWING

DRAWN SGO
2018-08-08

CHECKED

ENGINEER

APPROVED

MH

**MOUNTAIN HIGH E&S CO.
REDMOND, OR. USA**

THIS DOCUMENT AND ALL TECHNICAL DATA HEREON DISCLOSED ARE PROPERTY OF MOUNTAIN HIGH E&S CO. AND SHALL NOT BE USED, RELEASED OR DISCLOSED IN WHOLE OR PART WITHOUT WRITTEN PERMISSION FROM MOUNTAIN HIGH E&S CO. THIS DOCUMENT MUST BE RETURNED TO MOUNTAIN HIGH E&S CO. IMMEDIATELY UPON REQUEST.

DWG TITLE XCR Regulator, CGA-540 x 4mm Tube, Axial, w/ Gauge [Insert]

DWG NUMBER 5IREG-1030-00 DWG REV. M0

CAD FILE 00REG-1030-00\$M0 INV. PART NUMBER 00REG-1030-00 PROD. NAME XCR-CGA-1P-A-G

DWG FORMAT: ESR-002 Rev H [20] DWG SCALE DWG SHEET 1 OF 1 DWG SIZE A 11x8½

1

2

3

Insert #: 5IREG-1030-00