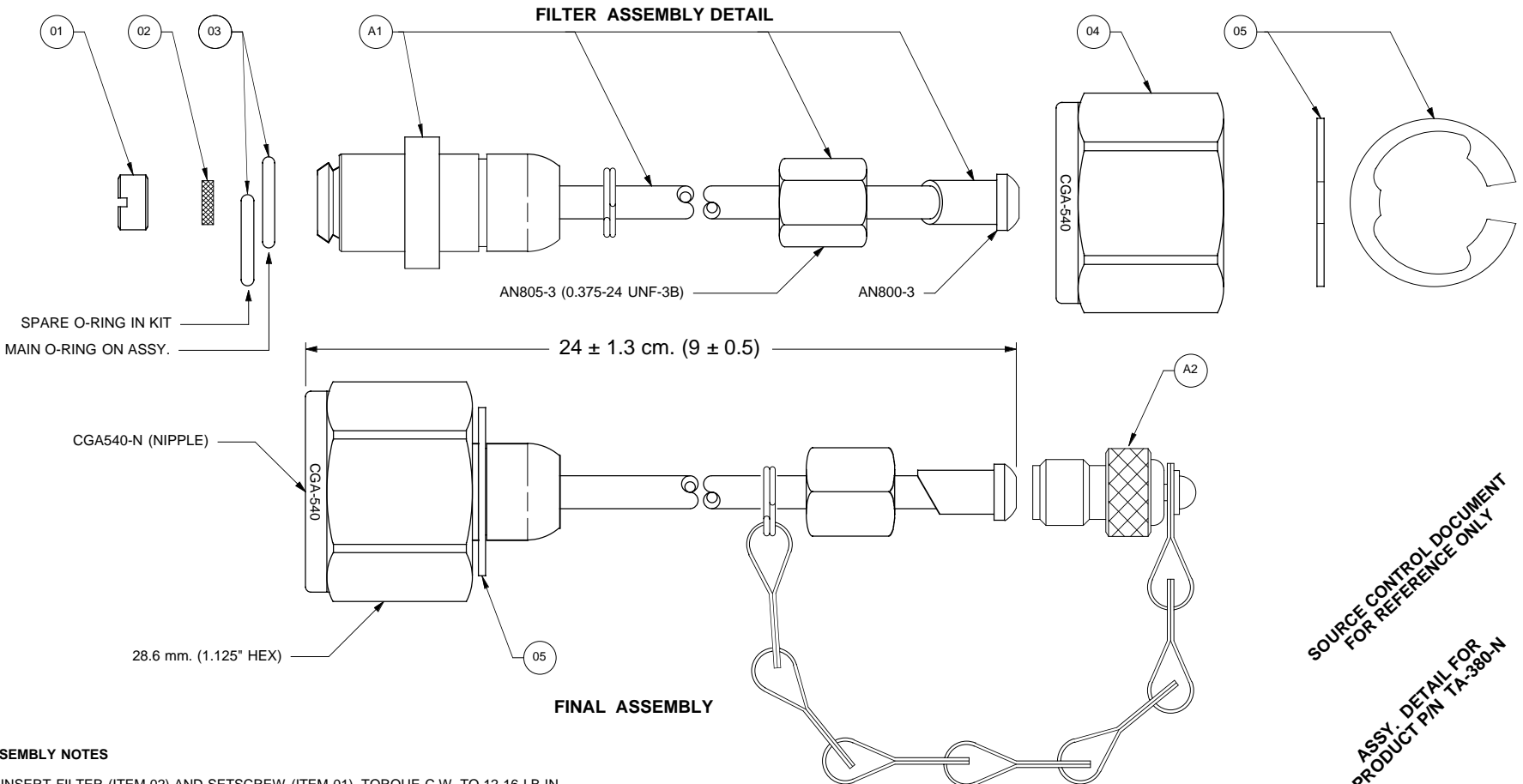


- NOTES:**  
 1. MATERIAL: BRASS CDA-360 AND COPPER; WEIGHT: 0.23 Kg. (6 Oz.)  
 2. FINISH: NONE.  
 3. CLEAN: UNLESS OTHERWISE SPECIFIED, PER AIR-1176A SEC. 5.  
 4. MARKING: UNLESS OTHERWISE SPECIFIED, PER IN-HOUSE DOC. ESR-005.  
 REMOVE ALL BURRS & SHARP EDGES

REVISION HISTORY (version roll-offs are kept onfile)			
REV	DATE	E. C. O. / APPR.	NOTES
A	02-12-01	PLM.	ADDED CHAIN & CAP ASSY.
B	11-11-11	HBS / PLM	CHANGED TO SPLIT-RING ON CHAIN ASSY. PLACED NEW FORMAT



SOURCE CONTROL DOCUMENT  
FOR REFERENCE ONLY

ASSY. DETAIL FOR  
PRODUCT PIN TA-380-N

**ASSEMBLY NOTES**

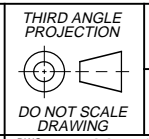
- A: INSERT FILTER (ITEM 02) AND SETSCREW (ITEM 01). TORQUE C.W. TO 12-16 LB-IN.  
 B: LUBRICATE AND INSTALL O-RING (ITEM 03) PER GAP-001.  
 C: SLIDE NUT (ITEM 04) AGAINST SHOULDER AND INSTALL RETAINING RING (ITEM 05).

REF	QTY	DWG / PART NO.	REV	SUB-ASSY.	NOMENCLATURE
01	01	0RG10-0202-00	A	-	SETSCREW, HOLLOW
02	01	09025-0003-00	-	-	FILTER
03	02	09001-0011-90	-	-	O-RING (AS 2-011)
A1	01	-	A	0TA54-0101-00	ASSY, TUBE CGA540-N/AN800
04	01	00HDW-0358-00	-	-	NUT, CGA-540
05	01	09005-0001-00	-	-	RING, RETAINING
A2	01	-	-	0CP01-0101-01	ASSY, CHAIN AND PROTECTOR CAP

UNLESS OTHERWISE SPECIFIED DIMS ARE IN INCHES.  
 TOLERANCES ARE:  
 0.X ±0.015 ANGLES FRACTIONS 63  
 0.XX ±0.010 ± 0.5° ± 1/64  
 0.XXX ±0.005

INTERPRET GD&T PER ASME 14.5 FMT REV H

ORIGINAL MO-DA-YR	PLM, 08-13-99	MATERIAL	△
ENGINEER MO-DA-YR	PLM, 08-13-99	FINISH	△
DRAWN MO-DA-YR	PLM, 08-13-99	CLEAN	△
CHECKED MO-DA-YR	-	MARKING	△



**MH** MOUNTAIN HIGH E&S CO. REDMOND, OR. USA

[ KC ] NUMBER OF KEY CHARACTERISTICS IN THIS DRAWING / DOCUMENT PER MH DOC: ESR-001

00

ASSY, CGA540-N/AN800 (SCD)	DWG. NUMBER	TA54-102-000	DWG. REVISION	REV B	DWG. SIZE	A
DRAWN MO-DA-YR	PLM, 08-13-99	CAD FILE NUMBER	TA54-540 AN-TYPE: -102 (SCD)	DWG. SHEETS	1 OF 1	
CHECKED MO-DA-YR	-	INV. PART NUMBER	00GSE-1000-00	CAT ITEM NUMBER	00GSE-1000-00	