

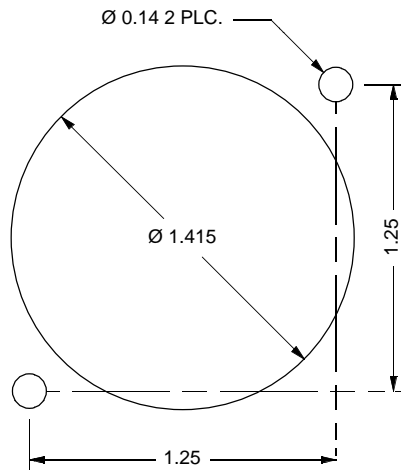
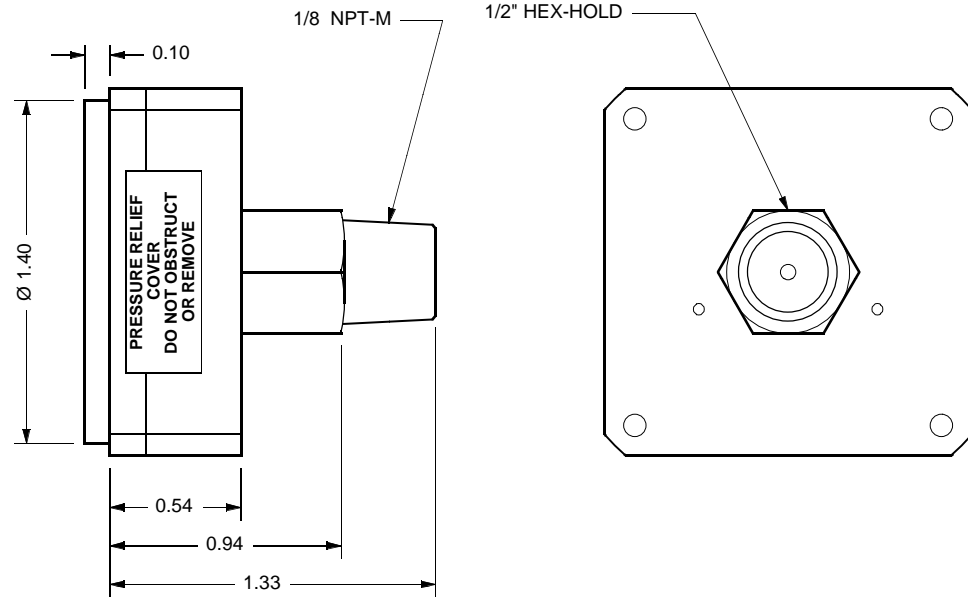
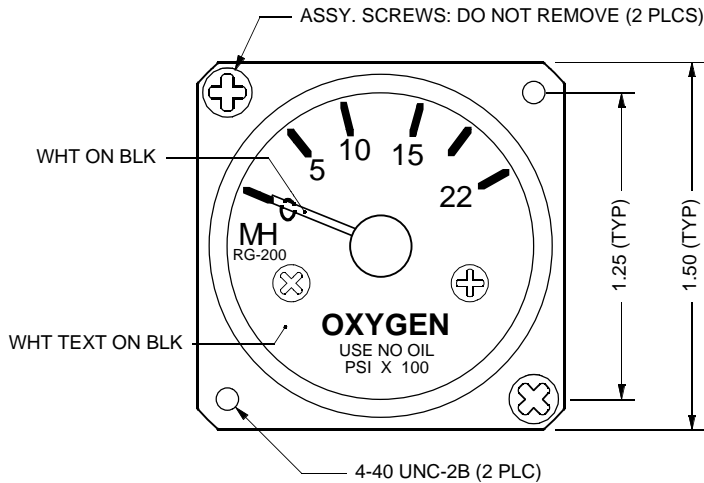
General Specifications

Service Gas: Oxygen per MIL-027210, Type 1
 Operating Pressure: 0-2200 psig (152 bar)
 Construction: Main Body 6061-T6 Alum.
 Anodize Per MIL-A-8625 Type II
 Connection Brass (1/8 NPT-M)

Safety Factor: 4:1

Weight: 2.0 oz Max

REVISION HISTORY			
REV	DATE	E. C. O. / APPR.	NOTES
A	06-02-97	PLM	REVISED TO SHOW NEW DIMENTIONS
B	05-01-00	PLM	REVISED WITH NEW FORMAT
C	12-12-00	PLM	REVISED TO SHOW CORRECT DIAL DETAIL (WAS DWG. NO. E-900105)
C1	2020-01-27	2020-003	Change Drawing #. was 9500-002, is 5ICPG-1006-00



Mounting hole template

RG-200 Oxygen Gauge
MH p/n: 00CPG-1006-00

UNLESS OTHERWISE SPECIFIED DIMS ARE IN INCHES. TOLERANCES ARE:		THIRD ANGLE PROJECTION.	<CR> KEY CHARACTERISTICS	NO.	
0.X	±0.015	ANGLES	<MA> PER CORP. DOC: ESR-001		
0.XX	±0.010	±0.5°	MH MOUNTAIN HIGH E&S CO. REDMOND, OR. USA		
0.XXX	±0.005	± 1/64	RG-200 Oxygen Gauge, SCD		
ISSUED: 09-27-96			DWG. #: 5ICPG-1006-00	REV C1	
DRAWN: PLM 09-27-96			SIZE A	SHEET 1 OF 1	DO NOT SCALE DRAWING
ENGINEER: PLM 09-27-96					
APPR: DATE					