

4

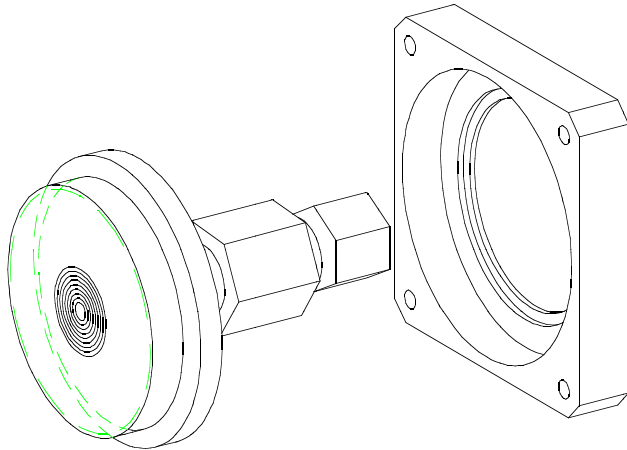
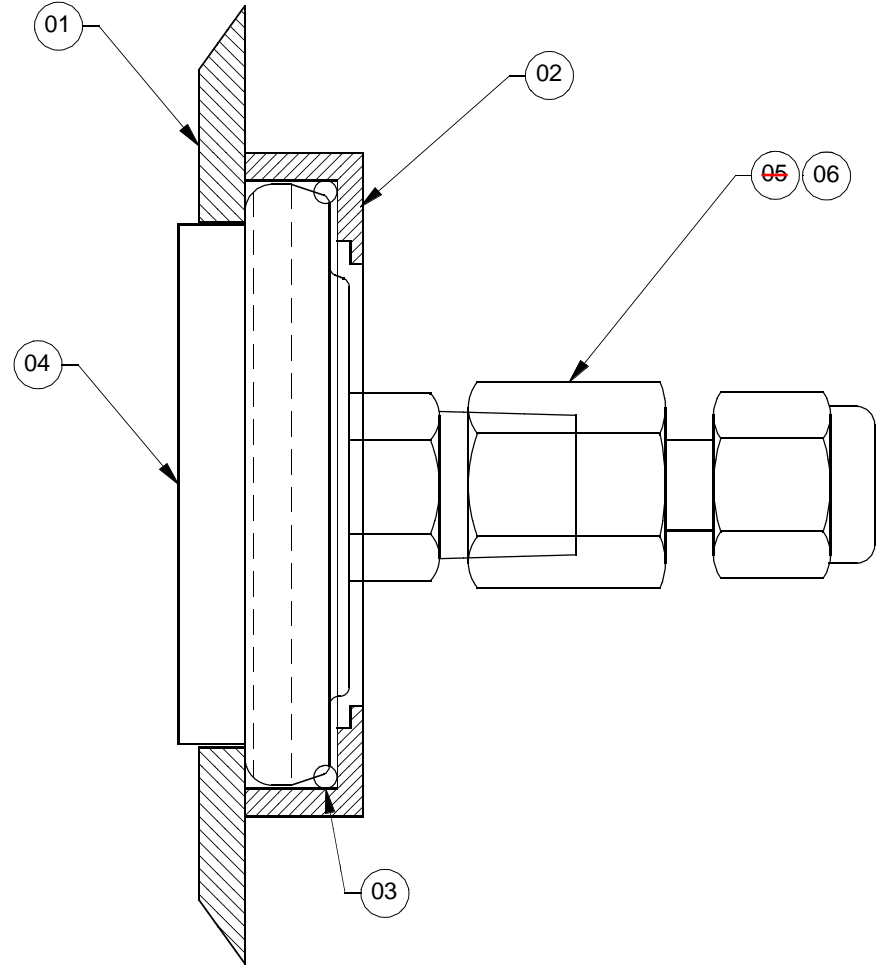
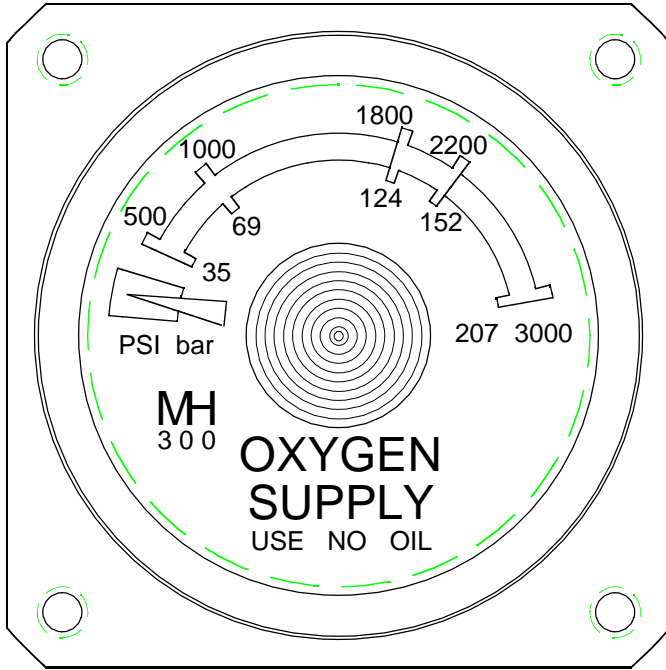
3

2

1

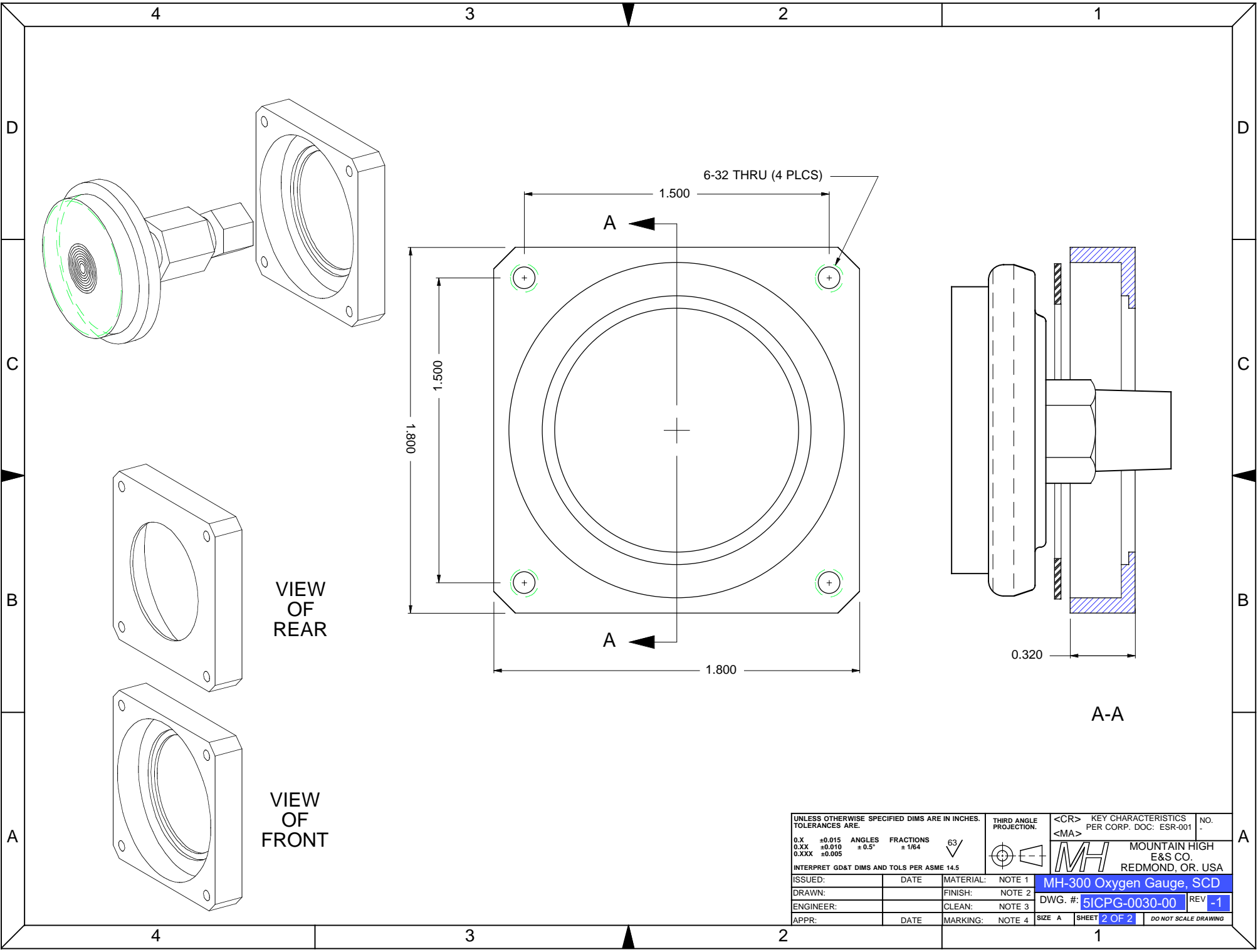
| REF | QTY | DWG / PART NO. | SUB-ASSY. | NOMENCLATURE |
|-----|-----|----------------|-----------|--|
| 01 | - | | | CUSTOMER'S PANEL |
| 02 | 01 | 00BLT-1076-00 | | REAR-MOUNT GAUGE-PLATE |
| 03 | 01 | 09001-1029-70 | | O-RING: 2-029 S-050 |
| 04 | 01 | 00CPG-1010-00 | | MH-300 GAUGE UNIT |
| 05 | | | | |
| 06 | 01 | 00HDW-0120-00 | | BRASS FITTING: 1/8 NPT-F TO 1/8" OD TUBE |
| | 04 | | | MOUNTING HARDWARE |

| REVISION HISTORY | | | |
|------------------|------------|------------------|---|
| REV | DATE | E. C. O. / APPR. | NOTES |
| -1 | 2020-01-27 | 2020-003 | Combine MH30-101, MH30-050; New Dwg # 5ICPG-0030-00; Update BOM |



MH-300 Pressure Gauge with Rear-mount Bezel
MH p/n 00CPG-0030-00

| | | | | |
|--|--------|-------------------------|--|--------------|
| UNLESS OTHERWISE SPECIFIED DIMS ARE IN INCHES. TOLERANCES ARE: | | THIRD ANGLE PROJECTION. | <CR> KEY CHARACTERISTICS | NO. |
| 0.X | ±0.015 | ANGLES | <MA> PER CORP. DOC: ESR-001 | |
| 0.XX | ±0.010 | ± 0.5° | | |
| 0.XXX | ±0.005 | FRACTIONS | | |
| | | ± 1/64 | | |
| INTERPRET GD&T DIMS AND TOLS PER ASME 14.5 | | | MH MOUNTAIN HIGH E&S CO. REDMOND, OR. USA | |
| ISSUED: | DATE | | MH-300 Gauge with Rear-mount Bezel | |
| DRAWN: | | | DWG. #: 5ICPG-0030-00 | REV -1 |
| ENGINEER: | | | SIZE A | SHEET 1 OF 2 |
| APPR: | DATE | | DO NOT SCALE DRAWING | |



VIEW OF REAR

VIEW OF FRONT

6-32 THRU (4 PLCS)

1.500

1.500
1.800

1.800

0.320

A-A

| | | | | | | |
|---|--------|-----------|-----------|------------------------------|--|---|
| UNLESS OTHERWISE SPECIFIED DIMS ARE IN INCHES. TOLERANCES ARE: | | | | THIRD ANGLE PROJECTION. | <CR> KEY CHARACTERISTICS PER CORP. DOC: ESR-001 | NO. |
| 0.X | ±0.015 | ANGLES | FRACTIONS | 63/ | <MA> | MOUNTAIN HIGH E&S CO REDMOND, OR. USA |
| 0.XX | ±0.010 | ±0.5° | ± 1/64 | | | |
| 0.XXX | ±0.005 | | | | | |
| INTERPRET GD&T DIMS AND TOLS PER ASME 14.5 | | | | | | |
| ISSUED: | DATE | MATERIAL: | NOTE 1 | MH-300 Oxygen Gauge, SCD | | |
| DRAWN: | | FINISH: | NOTE 2 | DWG. #: 5ICPG-0030-00 REV -1 | | |
| ENGINEER: | | CLEAN: | NOTE 3 | | | |
| APPR: | DATE | MARKING: | NOTE 4 | SIZE A | SHEET 2 OF 2 | DO NOT SCALE DRAWING |