

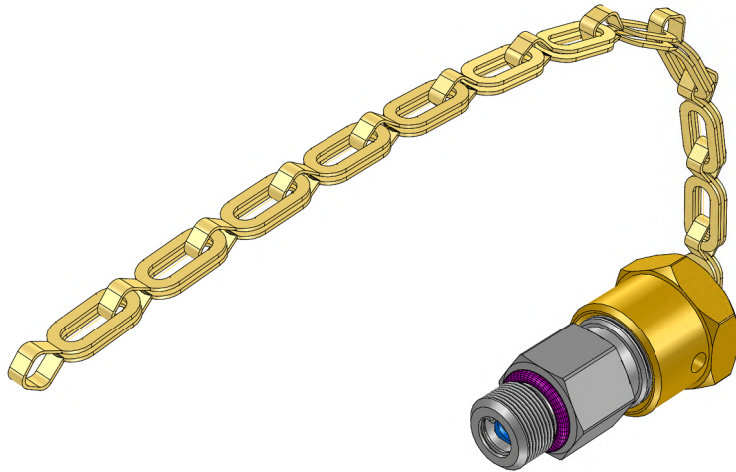
1

2

3

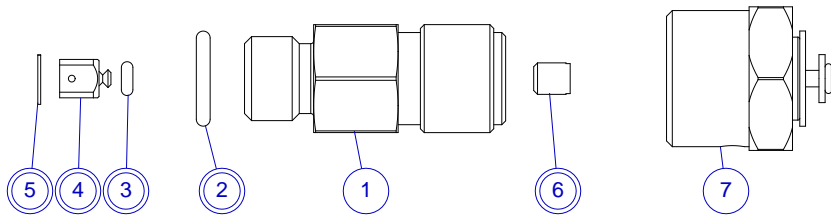
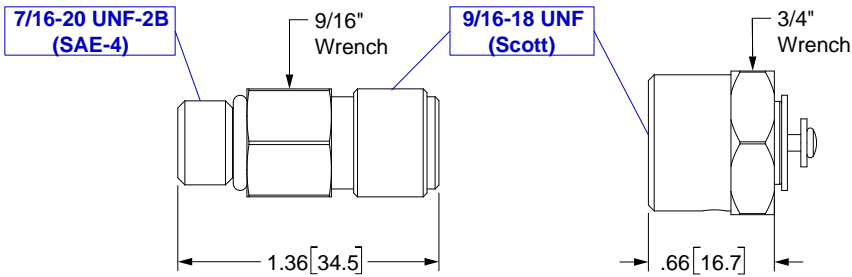
4

REV	ECO	Release	Drawn	REVISION HISTORY
D1	2017-020	2017-06-29	SGO	Customer Drawing



GENERAL SPECIFICATIONS

Material:	UNS C36000 (CDA-360) Brass UNS S30300 (303) Stainless Steel
Weight:	2.3 oz [65 g]
Inlet (Cap):	9/16-18 UNF (Scott)
Outlet:	7/16-20 UNF-2B (SAE-4)
Pressure Rating:	3000 PSI Working Pressure
Temp Range:	-50°F to +130°F [-45°C to +55°C]
Clean:	For Oxygen Service
Service Kit:	MH p/n KM100-1010-01 (Items 2, 3, 4, 5, 6)



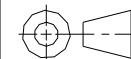
REF	Description
1	Check-Valve Body, Scott 9/16-18
2	O-Ring
3	O-Ring
4	Poppet
5	Retaining Ring
6	Filter
7	Cap & Chain Assembly, Scott 9/16-18

UNLESS OTHERWISE SPECIFIED, DIMENSIONS ARE IN INCHES. TOLERANCES ARE:
 0.X ±0.015
 0.XX ±0.010
 0.XXX ±0.005

ANGLES ±3°
 FRACTIONS ±1/64

INTERPRET GD&T PER ASME 14.5

THIRD ANGLE PROJECTION



DO NOT SCALE DRAWING

DRAWN SGO
2017-06-14

CHECKED

ENGINEER

APPROVED



MOUNTAIN HIGH E&S CO.
REDMOND, OR. USA

THIS DOCUMENT AND ALL TECHNICAL DATA HEREON DISCLOSED ARE PROPERTY OF MOUNTAIN HIGH E&S CO. AND SHALL NOT BE USED, RELEASED OR DISCLOSED IN WHOLE OR PART WITHOUT WRITTEN PERMISSION FROM MOUNTAIN HIGH E&S CO. THIS DOCUMENT MUST BE RETURNED TO MOUNTAIN HIGH E&S CO. IMMEDIATELY UPON REQUEST.

DWG TITLE Customer Drawing, Check Valve Assembly, Scott 9/16-18, Cap & Chain [SCD]

DWG NUMBER **5SBLT-1012-00** DWG REV. **D1**

CAD FILE 00BLT-1012-00\$D1 INV. PART NUMBER 00BLT-1012-00 PROD. NAME SAE-To-Scott-Adaptor

DWG FORMAT: ESR-002 Rev H [20] DWG SCALE DWG SHEET 1 OF 1 DWG SIZE 11x8 1/2

1

2

3

Insert #: 5IBLT-1012-00