

p/n: 00BLT-1010-00

Check Valve Assembly, SAE-4M x AN-800 w/ Cap & Chain

Date:

Cleaned for Oxygen Service per MH ESR-008

# MH

Aviation Oxygen Systems

**MOUNTAIN HIGH**  
Equipment & Supply Company

REV	ECO	Release	Drawn	REVISION HISTORY
G0	2020-011	2020-06-02	SGO	Customer Drawing

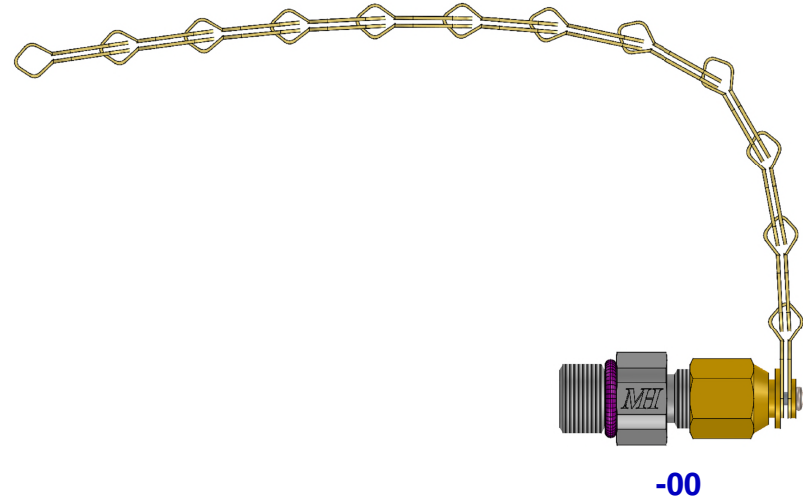
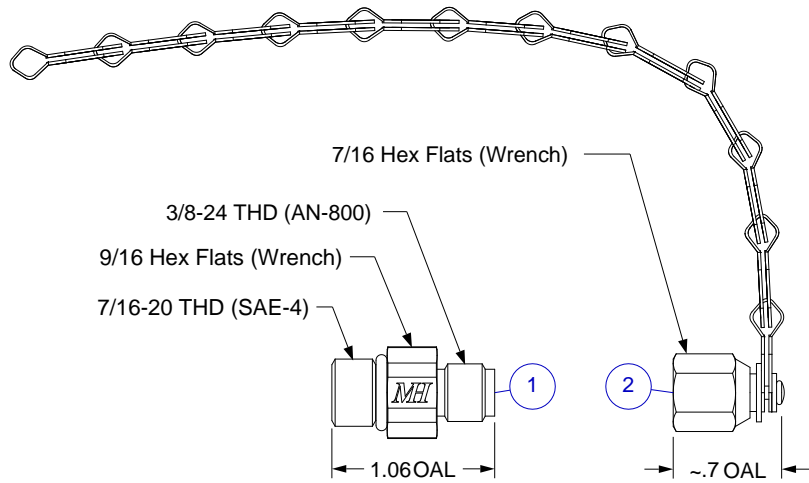
**GENERAL SPECIFICATIONS**

Materials: UNS C36000 (CDA-360) Brass  
UNS S30300 (303) Stainless Steel

Weight: 1.1 oz [32 g]  
Working Pressure: 3000 PSI  
Temp Range: -50°F to +130°F [-45°C to +55°C]

Service Kit: MH p/n KM100-1010-01

Cleaned for oxygen service per MH ESR-008



UNLESS OTHERWISE SPECIFIED, DIMENSIONS ARE IN INCHES.  
TOLERANCES ARE:  
0.X ±0.015 ANGLES ± 3°  
0.XX ±0.010 FRACTIONS ± 1/64  
0.XXX ±0.005  
INTERPRET GD&T PER ASME 14.5

**MH MOUNTAIN HIGH E&S CO.**  
**REDMOND, OR. USA**

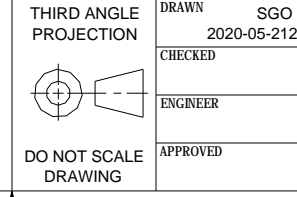
THIS DOCUMENT AND ALL TECHNICAL DATA HEREON DISCLOSED ARE PROPERTY OF MOUNTAIN HIGH E&S CO. AND SHALL NOT BE USED, RELEASED OR DISCLOSED IN WHOLE OR PART WITHOUT WRITTEN PERMISSION FROM MOUNTAIN HIGH E&S CO. THIS DOCUMENT MUST BE RETURNED TO MOUNTAIN HIGH E&S CO. IMMEDIATELY UPON REQUEST.

Customer Drawing, Check Valve Assy,  
SAE-4M x AN-800 w/ Cap & Chain

DWG TITLE: **5IBLT-1010-00** DWG REV. **G0**

DWG NUMBER: 00BLT-1010-xx\$G0 INV. PART NUMBER: 00BLT-1010-00 PROD. NAME

DWG FORMAT: ESR-002 Rev H [23] DWG SCALE: DWG SHEET: 1 OF 1 DWG SIZE: A 11x8½



Item	Qty	Description
1	1	SAE-4 to AN-800 Filler Body Assy
2	1	AN-800 Cap & Chain Assembly

Insert #: 5IBLT-1010-00