

**NOTES:**  
**UNLESS OTHERWISE SPECIFIED IN THE QR OR PO, THE FOLLOWING SHALL APPLY**

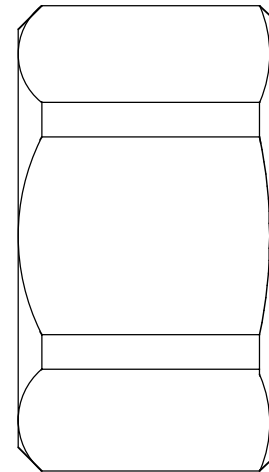
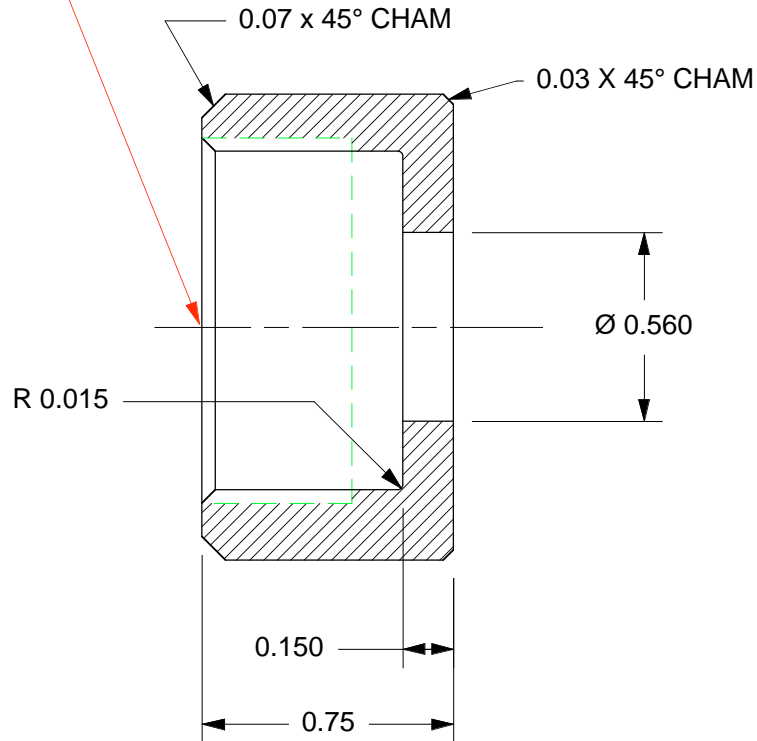
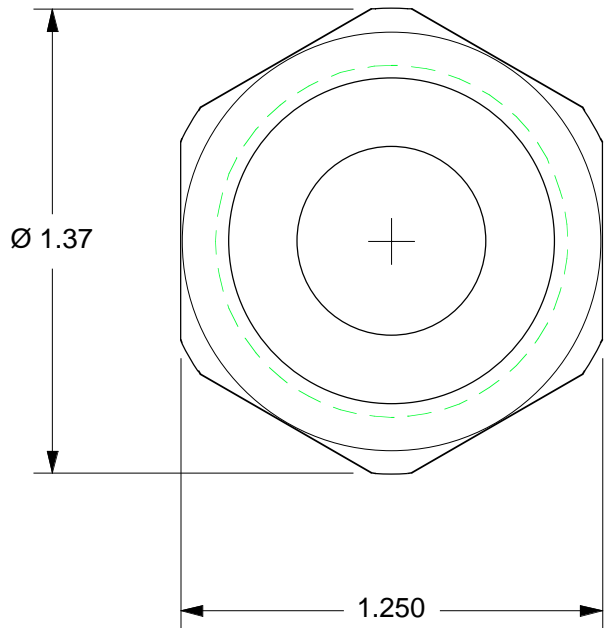
- ⚠ MATERIAL: UNS C36000 CDA-360 BRASS
  - ⚠ FINISH: NONE
  - ⚠ CLEAN: PER IN HOUSE DOCUMENT: ESR-008
  - ⚠ MARKING: PER IN-HOUSE DOCUMENT ESR-005
- REMOVE ALL BURRS & SHARP EDGES**

REVISION HISTORY			
REV	MO-DA-YR	E. C. O. / APPR.	NOTES
-	10-20-1999	PLM	ORIGINAL RELEASE
A	06-17-2014	HBS / PLM	RELABELED THREAD SPEC. TO BSPP R 3/4 RH
A1	07-01-2014	2014-029	Corrections as highlighted

**BSPP R 3/4 RH (55° WHITWORTH, 14 THD / INCH)**

MINOR: Ø 0.9495 / 0.9708  
 MAJOR: Ø 1.041 MAX.  
 PITCH: Ø 0.9952 / 1.0008  
 0.450 DEEP

[KC-01]



**DIN-477-9  
 OXYGEN**

THIS DOCUMENT AND ALL TECHNICAL DATA HEREON DISCLOSED ARE PROPERTY OF MOUNTAIN HIGH E&S CO. AND SHALL NOT BE USED, RELEASED OR DISCLOSED IN WHOLE OR PART WITHOUT WRITTEN PERMISSION FROM MOUNTAIN HIGH E&S CO. THIS DOCUMENT MUST BE RETURNED TO MOUNTAIN HIGH E&S CO. IMMEDIATELY UPON REQUEST.

UNLESS OTHERWISE SPECIFIED DIMS ARE IN INCHES. TOLERANCES ARE:				THIRD ANGLE PROJECTION		MOUNTAIN HIGH E&S CO. REDMOND, OR. USA		
0.X	±0.015	ANGLES	FRACTIONS	63		[KC] NUMBER OF KEY CHARACTERISTICS IN THIS DRAWING / DOCUMENT PER MH DOC: ESR-001		
0.XX	±0.010	± 0.5°	± 1/64			01		
0.XXX	±0.005							
INTERPRET GD&T PER ASME 14.5				FMT REV H		UTILITY BRASS GRIP-NUT (DIN-477-9 OXYGEN)		
ORIGINAL MO-DA-YR	PLM, 09-15-99	MATERIAL	⚠	DWG. TITLE				
ENGINEER MO-DA-YR	PLM, 09-15-99	FINISH	⚠	DWGS. NUMBER	DN47-205-000	DWG. SIZE	A	
DRAWN MO-DA-YR	PLM, 09-20-99	CLEAN	⚠	CAD FILE NUMBER	DIN47-205	DWG. SHEETS	1 OF 1	
CHECKED MO-DA-YR	10-20-99	MARKING	⚠	INV. PART NUMBER	00HDW-0376-00	DWG. REVISION	REV A1	
						CAT ITEM NUMBER	00HDW-0376-00	