

REVISION HISTORY		NOTES
REV	MOD-DA-YR	NEO / ECO #
	06-22-07	N/A
		APPR
		PLM
		INITIAL DRAFT

A: OUTPUT TO GAUGE
B: +10 to +36 VDC
C: NOT USED

PIN 03 FOR USE WITH 14V PRESSURE SENDING UNITS ONLY

CABLE SHIELD IS RECOMMENDED IF LENGTH IS OVER 3 FEET

+12 to 32 VDC

+12 OUT

- GND

0 to +28 VDC FROM LIGHT DIMMER

UMA 10-700-28

0 to +14 VDC FROM LIGHT DIMMER

UMA 10-700-14

- GND

- GND

DE-09 CONNECTOR ON GAUGE BACK

4-20 ma. Cylinder pressure sending unit

1: +12 TO +32 VDC POWER INPUT
 2: INTERNALLY CONNECTED TO PIN 1
 3: +12 VDC OUT FOR 14V SENDING UNITS ONLY
 4: N/C
 5: INPUT (4 - 20 MA PRESSURE SENDING UNIT)
 6: EL INTERNAL LIGHTING AC INPUT
 7: EL INTERNAL LIGHTING AC INPUT
 8: INTERNALLY CONNECTED TO PIN 9
 9: GROUND

UNLESS OTHERWISE SPECIFIED DIMS ARE IN INCHES. TOLERANCES ARE:

0.X	±0.015	ANGLES	±0.5°	FRACTIONS	± 1/64	63	THIRD ANGLE PROJECTION
0.XX	±0.010						
0.XXX	±0.005						

INTERPRET GD&T PER ASME 14.5 FMT REV G

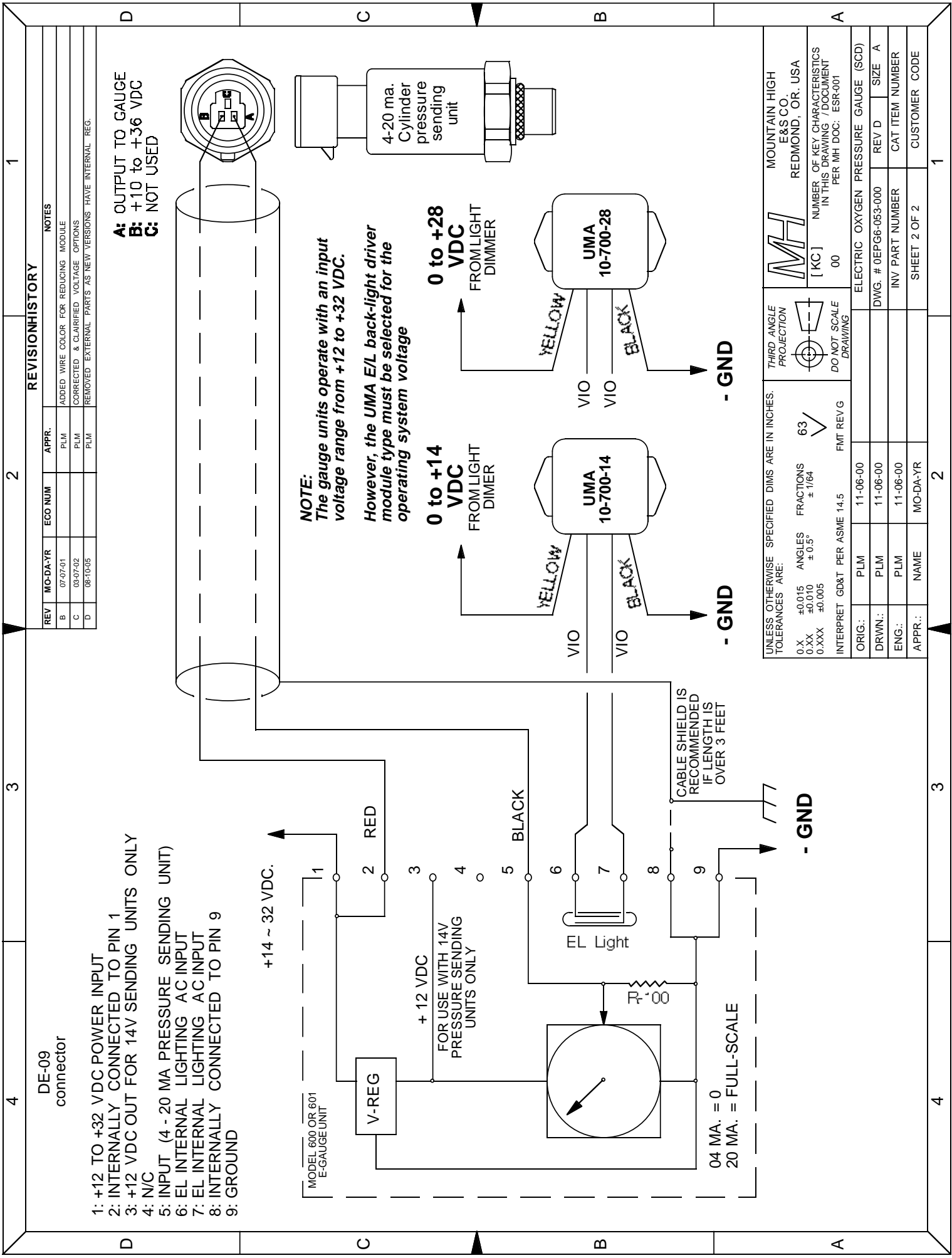
ORIG.:	SBW / PLM	06-22-07	ELECT. OXYGEN PRESSURE GAUGE E/L CONFIG
DRWN.:	SBW / PLM	06-22-07	DWG. # 0EPG6-053-000
ENG.:	SBW / PLM	06-22-07	REV -
APPR.:	NAME	MO-DA-YR	CAT ITEM NUMBER
			INV PART NUMBER
			SHEET 1 OF 2
			CUSTOMER CODE

MOUNTAIN HIGH E&S CO. REDMOND, OR, USA

[KC] NUMBER OF KEY CHARACTERISTICS IN THIS DRAWING / DOCUMENT PER NH DOC: ESR-001

00

NOTE: The gauge units operate with an input voltage range from +12 to +32 VDC. However, the UMA E/L back-light driver module type must be selected for the operating system voltage



- 1: +12 TO +32 VDC POWER INPUT
- 2: INTERNALLY CONNECTED TO PIN 1
- 3: +12 VDC OUT FOR 14V SENDING UNITS ONLY
- 4: N/C
- 5: INPUT (4 - 20 MA PRESSURE SENDING UNIT)
- 6: EL INTERNAL LIGHTING AC INPUT
- 7: EL INTERNAL LIGHTING AC INPUT
- 8: INTERNALLY CONNECTED TO PIN 9
- 9: GROUND

NOTE:
 The gauge units operate with an input voltage range from +12 to +32 VDC.
 However, the UMA E/L back-light driver module type must be selected for the operating system voltage

0 to +14 VDC
 FROM LIGHT DIMMER

0 to +28 VDC
 FROM LIGHT DIMMER

CABLE SHIELD IS RECOMMENDED IF LENGTH IS OVER 3 FEET

REVISION HISTORY				
REV	MO-DA-YR	ECO NUM	APPR.	NOTES
B	07-07-01		PLM	ADDED WIRE COLOR FOR REDUCING MODULE
C	03-07-02		PLM	CORRECTED & CLARIFIED VOLTAGE OPTIONS
D	08-10-05		PLM	REMOVED EXTERNAL PARTS AS NEW VERSIONS HAVE INTERNAL REG.

A: OUTPUT TO GAUGE
B: +10 to +36 VDC
C: NOT USED

UNLESS OTHERWISE SPECIFIED DIMS ARE IN INCHES. TOLERANCES ARE:		THIRD ANGLE PROJECTION	
0.X	±0.015	ANGLES	±0.5°
0.XX	±0.010	FRACTIONS	± 1/64
0.XXX	±0.005		
INTERPRET GD&T PER ASME 14.5		FMT REV G	
ORIG.:	PLM	11-06-00	
DRWN.:	PLM	11-06-00	
ENG.:	PLM	11-06-00	
APPR.:	NAME	MO-DA-YR	

MH	MOUNTAIN HIGH E&S CO. REDMOND, OR, USA
[KC]	NUMBER OF KEY CHARACTERISTICS IN THIS DRAWING / DOCUMENT PER MH DOC: ESR-001
00	
ELECTRIC OXYGEN PRESSURE GAUGE (SCD)	
DWG. # 0EFG6-053-000	REV D
SIZE	A
INV PART NUMBER	CAT ITEM NUMBER
SHEET 2 OF 2	CUSTOMER CODE