

p/n: **AMSK0-0101-00**

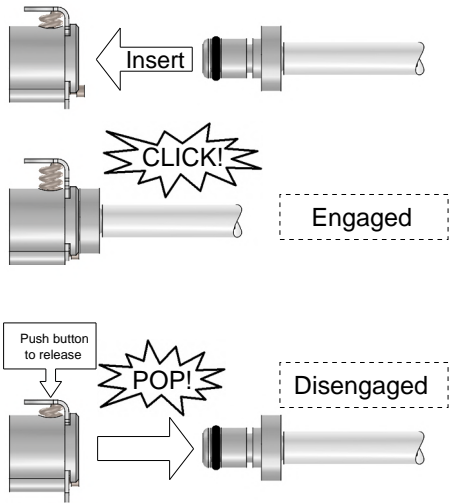
Feedtube Assembly, ALPS (EOS) Masks, CPC

Date:

Cleaned for Oxygen Service per MH ESR-008



INLET TUBING CONNECTION - CPC Quick-Connect Fitting



To insert:

Simply insert the male connector into the female outlet on the XCP/FPR regulator. Push in firmly until the connector engages with a "**CLICK**" sound. You now have a secure air-tight connection.

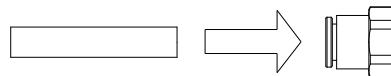
To remove:

Push in the side release button and the male connector will disengage with a "**POP**". The internal check valve will close to stop the flow of oxygen.

OUTLET TUBING CONNECTION - 6mm Push-To-Connect Fitting

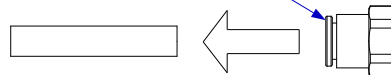
INSERTING

Push in the tubing



REMOVING

1. Push in the connector collar
2. Pull the tube straight back while holding the collar in



To INSERT TUBING: Push the tubing into the connector until resistance is felt, **then push a little further, about 1/8 inch [3 mm]**. Gently tug on the tubing to make sure it is captured.

To REMOVE TUBING: Push the tubing in slightly, then push in the connector collar while pulling gently on the tubing.

When removing tubing, **DO NOT pull on the tubing without pushing in the collar**, as this will likely damage the connector.

REV	ECO	Release	Drawn	REVISION HISTORY
A0	2019-054A	2019-12-26	SGO	Customer Drawing [Insert]

READ BEFORE USE

Connect the inlet fitting end of the feed tube to your Emergency Oxygen System (EOS) as shown. Route the tubing out of the way and connect the blue 6mm tubing end into the one-touch fitting on the ALPS mask as shown. In an emergency, don the mask and turn your emergency oxygen system on. The flow indicator should display green to indicate oxygen delivery.

GENERAL SPECIFICATIONS

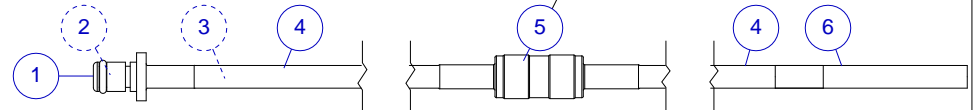
Tubing:	Ø 9/32" OD Low-Pressure PVC (68 Durometer) Ø 6mm OD Low-Pressure PolyUrethane (95 Durometer) (see also MH documents 5I930-0001-00, 5I930-0006-00)
Temperature:	25°F to +105°F [-4°C to +40°C] Nominal Operating Range
Pressure:	65 PSI [4.5 Bar] MAX Operating Pressure
Flow Rate:	3.0 L/min (fixed inline flow-restricting orifice)
Inlet:	5/16 CPC Quick-Connect Insert Fitting
Outlet:	6mm Poly tube (ALPS Mask)
Length:	4.5 ft [137 cm]
Weight:	2.1 oz [60 g] (approx.)
Service Life:	2 years nominal, inspect and replace as required
Oxygen Compatible Components	
Cleaned for Oxygen Service per MH ESR-008	

Item	Description
1	CPC 5/16 Insert Fitting
2	Filter
3	Flow Restrictor
4	9/32" PVC Tubing [Clear]
5	Flow Indicator
6	6mm PolyUrethane Tubing [Blue]

Flow Indicator



RED no oxygen flowing
GREEN oxygen is flowing

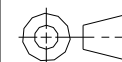


UNLESS OTHERWISE SPECIFIED, DIMENSIONS ARE IN INCHES. TOLERANCES ARE:
0.X ±0.015
0.XX ±0.010
0.XXX ±0.005

ANGLES ±3°
FRACTIONS ±1/64

INTERPRET GD&T PER ASME 14.5

THIRD ANGLE
PROJECTION



DO NOT SCALE
DRAWING

DRAWN SGO
2019-12-04

CHECKED

ENGINEER

APPROVED



MOUNTAIN HIGH E&S CO.
REDMOND, OR. USA

THIS DOCUMENT AND ALL TECHNICAL DATA HEREON DISCLOSED ARE PROPERTY OF MOUNTAIN HIGH E&S CO. AND SHALL NOT BE USED, RELEASED OR DISCLOSED IN WHOLE OR PART WITHOUT WRITTEN PERMISSION FROM MOUNTAIN HIGH E&S CO. THIS DOCUMENT MUST BE RETURNED TO MOUNTAIN HIGH E&S CO. IMMEDIATELY UPON REQUEST.

DWG TITLE Feedtube Assembly for ALPS, Emergency (EOS) Masks, CPC Fitting			
DWG NUMBER 5ISK0-0101-00		DWG REV. A0	
CAD FILE 5ISK0-0101*012x\$A0	INV. PART NUMBER AMSK0-0101-00	PROD. NAME ALPS Feedtube with CPC fitting	DWG SIZE 11x8 1/2
DWG FORMAT: ESR-002 Rev H [20]	DWG SCALE	DWG SHEET 1 OF 1	

Insert #: 5ISK0-0101-00