

p/n: **AMSK0-0120-00**

Feedtube Assembly, ALPS (EOS) Masks, Scott

Date:

Cleaned for Oxygen Service per MH ESR-008



REV	ECO	Release	Drawn	REVISION HISTORY
A0	2019-054A	2019-12-26	SGO	Customer Drawing [Insert]

**READ BEFORE USE**

Connect the inlet fitting end of the feed tube to your Emergency Oxygen System (EOS) as shown. Route the tubing out of the way and connect the blue 6mm tubing end into the one-touch fitting on the ALPS mask as shown. In an emergency, don the mask and turn your emergency oxygen system on. The flow indicator should display green to indicate oxygen delivery.

**GENERAL SPECIFICATIONS**

Tubing: Ø 9/32" OD Low-Pressure PVC (68 Durometer)  
 Ø 6mm OD Low-Pressure PolyUrethane (95 Durometer)  
 (see also MH documents 5I930-0001-00, 5I930-0006-00)

Temperature: 25°F to +105°F [-4°C to +40°C] Nominal Operating Range  
 Pressure: 65 PSI [4.5 Bar] MAX Operating Pressure  
 Flow Rate: 3.0 L/min (fixed inline flow-restricting orifice)

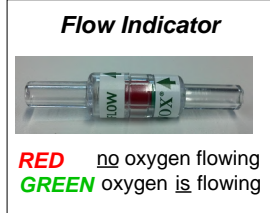
Inlet: Scott A-8570 Type BNC Fitting  
 Outlet: 6mm Poly tube (ALPS Mask)

Length: 4.5 ft [137 cm]  
 Weight: 2.1 oz [60 g] (approx.)

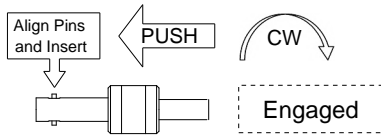
Service Life: 2 years nominal, inspect and replace as required

Oxygen Compatible Components  
 Cleaned for Oxygen Service per MH ESR-008

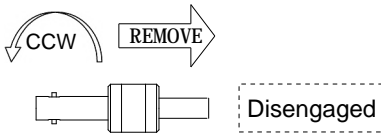
Item	Description
1	Scott BNC Connector
2	Flow Restrictor
3	Filter
4	9/32" PVC Tubing [Clear]
5	Flow Indicator
6	6mm PolyUrethane Tubing [Blue]



**INLET TUBING CONNECTION - Scott BNC Fitting**



**To insert:**  
 Align the pins on the end of the connector with the matching slots in the Scott-style oxygen system receptacle and insert the connector. Some resistance will be felt as the internal check valve is engaged. Push the connector in slightly to open the check valve and turn the connector to the right (clockwise) until it stops (not quite a half-turn). The connector should now be engaged and "locked-in" to the receptacle.



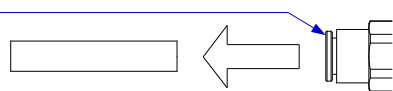
**To remove:**  
 Turn the connector to the left (counter-clockwise). When the connector pins align with the receptacle slots the connector will back-out slightly as the check-valve closes. The connector should now be disengaged and may be removed from the receptacle.

**OUTLET TUBING CONNECTION - 6mm Push-To-Connect Fitting**

**INSERTING**  
 Push in the tubing



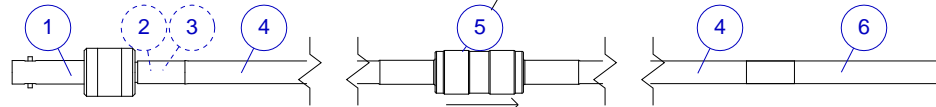
**REMOVING**  
 1. Push in the connector collar  
 2. Pull the tube straight back while holding the collar in



**To INSERT TUBING:** Push the tubing into the connector until resistance is felt, then push a little further, about 1/8 inch [3 mm]. Gently tug on the tubing to make sure it is captured.

**To REMOVE TUBING:** Push the tubing in slightly, then push in the connector collar while pulling gently on the tubing.

When removing tubing, **DO NOT pull on the tubing without pushing in the collar**, as this will likely damage the connector.



UNLESS OTHERWISE SPECIFIED, DIMENSIONS ARE IN INCHES. TOLERANCES ARE:  
 0.X ±0.015  
 0.XX ±0.010  
 0.XXX ±0.005

ANGLES ± 3°  
 FRACTIONS ± 1/64

INTERPRET GD&T PER ASME 14.5

**MH MOUNTAIN HIGH E&S CO. REDMOND, OR. USA**

THIS DOCUMENT AND ALL TECHNICAL DATA HEREON DISCLOSED ARE PROPERTY OF MOUNTAIN HIGH E&S CO. AND SHALL NOT BE USED, RELEASED OR DISCLOSED IN WHOLE OR PART WITHOUT WRITTEN PERMISSION FROM MOUNTAIN HIGH E&S CO. THIS DOCUMENT MUST BE RETURNED TO MOUNTAIN HIGH E&S CO. IMMEDIATELY UPON REQUEST.

THIRD ANGLE PROJECTION	DRAWN SGO 2019-12-04	DWG TITLE <b>Feedtube Assembly for ALPS, Emergency (EOS) Masks, Scott Fitting</b>	
CHECKED	ENGINEER	DWG NUMBER <b>5ISK0-0120-00</b>	DWG REV. <b>A0</b>
APPROVED	DWG FORMAT: ESR-002 Rev H [20]	INV. PART NUMBER AMSK0-0120-00	PROD. NAME ALPS Feedtube with Scott fitting
DO NOT SCALE DRAWING	DWG SCALE	DWG SHEET 1 OF 1	DWG SIZE A 11x8½

Insert #: 5ISK0-0120-00