

p/n: **AMSK0-0122-00**

Feedtube Assembly, ALPS (EOS) Masks, PB-750

Date:

Cleaned for Oxygen Service per MH ESR-008



REV	ECO	Release	Drawn	REVISION HISTORY
A0	2019-054A	2019-12-26	SGO	Customer Drawing [Insert]

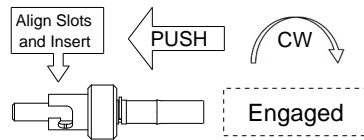
#### READ BEFORE USE

Connect the inlet fitting end of the feed tube to your Emergency Oxygen System (EOS) as shown. Route the tubing out of the way and connect the blue 6mm tubing end into the one-touch fitting on the ALPS mask as shown. In an emergency, don the mask and turn your emergency oxygen system on. The flow indicator should display green to indicate oxygen delivery.

#### GENERAL SPECIFICATIONS

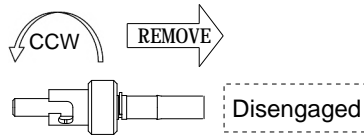
Tubing:	Ø 9/32" OD Low-Pressure PVC (68 Durometer) Ø 6mm OD Low-Pressure PolyUrethane (95 Durometer) (see also MH documents 5I930-0001-00, 5I930-0006-00)
Temperature:	25°F to +105°F [-4°C to +40°C] Nominal Operating Range
Pressure:	65 PSI [4.5 Bar] MAX Operating Pressure
Flow Rate:	3.0 L/min (fixed inline flow-restricting orifice)
Inlet:	PB-750 BNC Fitting
Outlet:	6mm Poly tube (ALPS Mask)
Length:	4.5 ft [137 cm]
Weight:	2.1 oz [60 g] (approx.)
Service Life:	2 years nominal, inspect and replace as required
Oxygen Compatible Components	
Cleaned for Oxygen Service per MH ESR-008	

#### INLET TUBING CONNECTION - PB-750 BNC Fitting



##### To insert:

Align the slots on the connector collar with the matching pins on the oxygen system receptacle and insert the connector. Some resistance will be felt as the internal check valve is engaged. Push the connector in slightly to open the check valve and turn the collar to the right (clockwise) until it stops (about one-eighth turn: 45°). The connector should now be engaged and "locked-in" to the receptacle.

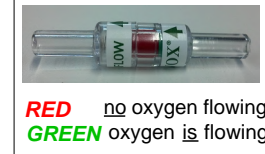


##### To remove:

Push the connector in slightly and turn the collar to the left (counter-clockwise). When the collar slots align with the receptacle pins the connector will back-out slightly as the check valve closes. The connector should now be disengaged and may be removed from the receptacle.

Item	Description
1	PB-750 BNC Connector
2	Flow Restrictor
3	Filter
4	9/32" PVC Tubing [Clear]
5	Flow Indicator
6	6mm PolyUrethane Tubing [Blue]

#### Flow Indicator



#### OUTLET TUBING CONNECTION - 6mm Push-To-Connect Fitting

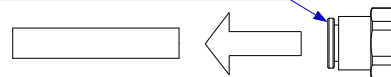
##### INSERTING

Push in the tubing



##### REMOVING

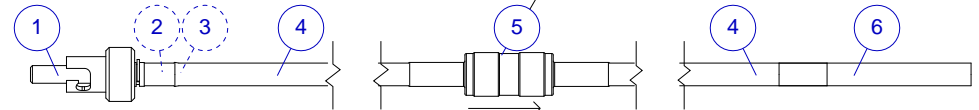
1. Push in the connector collar
2. Pull the tube straight back while holding the collar in



**To INSERT TUBING:** Push the tubing into the connector until resistance is felt, **then push a little further, about 1/8 inch [3 mm]**. Gently tug on the tubing to make sure it is captured.

**To REMOVE TUBING:** Push the tubing in slightly, then push in the connector collar while pulling gently on the tubing.

When removing tubing, **DO NOT pull on the tubing without pushing in the collar**, as this will likely damage the connector.

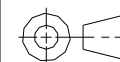


UNLESS OTHERWISE SPECIFIED, DIMENSIONS ARE IN INCHES. TOLERANCES ARE:  
0.X ±0.015  
0.XX ±0.010  
0.XXX ±0.005

ANGLES ±3°  
FRACTIONS ±1/64

INTERPRET GD&T PER ASME 14.5

THIRD ANGLE  
PROJECTION



DO NOT SCALE  
DRAWING

DRAWN SGO  
2019-12-04

CHECKED

ENGINEER

APPROVED



**MOUNTAIN HIGH E&S CO.  
REDMOND, OR. USA**

THIS DOCUMENT AND ALL TECHNICAL DATA HEREON DISCLOSED ARE PROPERTY OF MOUNTAIN HIGH E&S CO. AND SHALL NOT BE USED, RELEASED OR DISCLOSED IN WHOLE OR PART WITHOUT WRITTEN PERMISSION FROM MOUNTAIN HIGH E&S CO. THIS DOCUMENT MUST BE RETURNED TO MOUNTAIN HIGH E&S CO. IMMEDIATELY UPON REQUEST.

DWG TITLE		Feedtube Assembly for ALPS, Emergency (EOS) Masks, PB-750 Fitting	
DWG NUMBER		<b>5ISK0-0122-00</b>	
DWG REV.		<b>A0</b>	
CAD FILE	5ISK0-0101*012x\$A0	INV. PART NUMBER	AMSK0-0122-00
DWG FORMAT:	ESR-002 Rev H [20]	DWG SCALE	
DWG SHEET	1 OF 1	DWG SIZE	A 11x8½

Insert #: 5ISK0-0122-00