

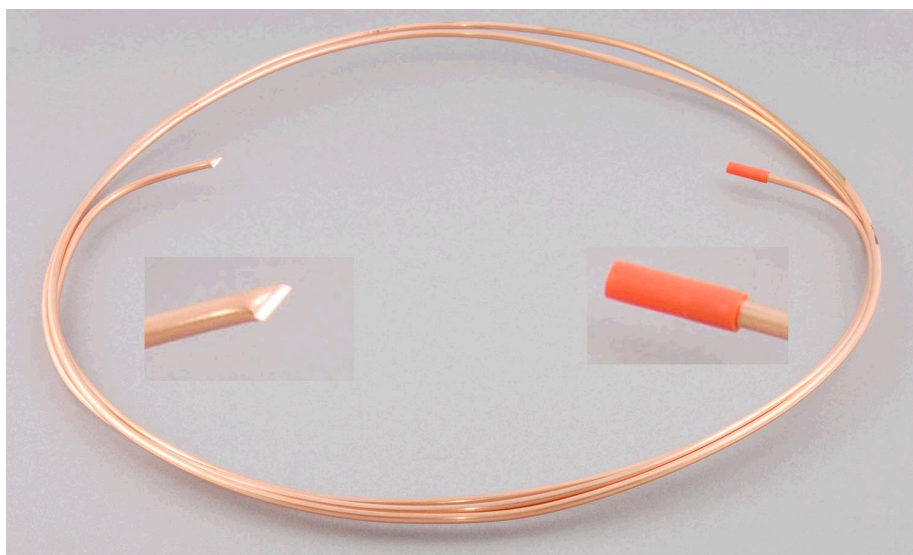
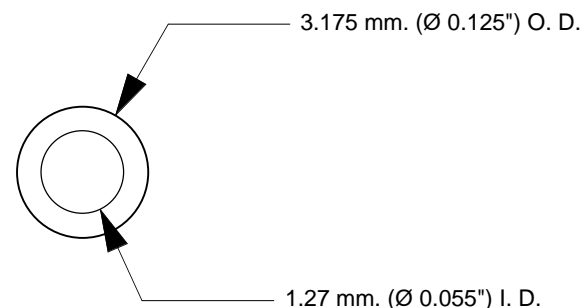
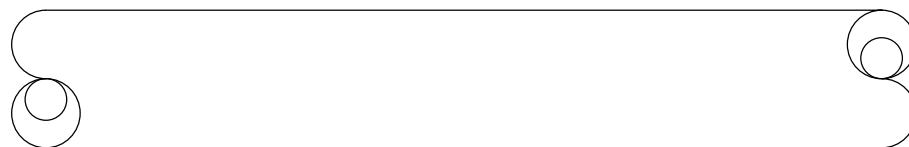
SPECIFICATIONS

MATERIAL; COPPER ASTM-B280
PRESSURE RATING; 3500 PSIG.
O.D.; 1/8" [0.125"] (3.175 mm.)
WALL; 0.035" (0.889 mm.)
TEMP RANGE; -25°F (-31.6° C) TO 125°F (51.6° C)
PACKAGE: 12', 25' or 50' COIL ROLL. CLEANED & CAPPED

1/8" OD Copper Tubing



MH Item #: 19605-0002-XX

where X = ordered length



Unless ordered special, all 1/8" OD copper tubing will be shipped in a 12" dia. coil with the ends either capped (image right) or crimped (image Left) or both ways while being cut to length as ordered.

REVISION HISTORY			
REV	MO-DA-YR	E. C. O. / APPR.	NOTES
A	06-20-00	PLM	UPGRADED DRAWING ONLY WITH NEW FORMAT
B	04-21-13	PLM	UPGRADED WITH IMAGES

UNLESS OTHERWISE SPECIFIED DIMS ARE IN INCHES. TOLERANCES ARE:				THIRD ANGLE PROJECTION.		<CR> KEY CHARACTERISTICS			NO.
0.X ±0.015 ANGLES FRACTIONS 0.XX ±0.010 ± 0.5° ± 1/64 0.XXX ±0.005				63/		<MA> PER CORP. DOC: ESR-001			-
INTERPRET GD&T DIMS AND TOLS PER ASME 14.5						 MOUNTAIN HIGH E&S CO. REDMOND OR. USA			
ISSUED:		4-23-96		MATERIAL: N/A		TUBE; 1/8" OD COPPER			
DRAWN:		4-23-96		FINISH: N/A		DWG. #: E-930001			
ENGINEER: MJG		DATE		CLEAN: N/A					
APPR:		DATE		MARKING: N/A		SIZE A	SHEET 1 OF 1		DO NOT SCALE DRAWING