

1

2

3

4

REV

ECO

Release

Drawn

REVISION HISTORY

-0

2016-057

2016-11-10

SGO

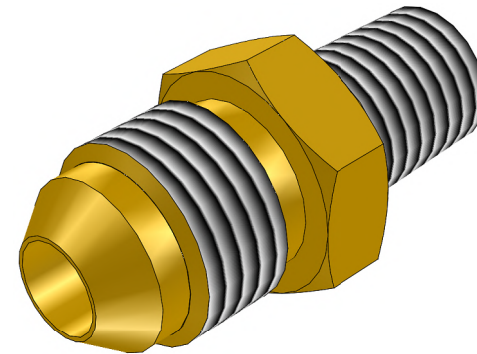
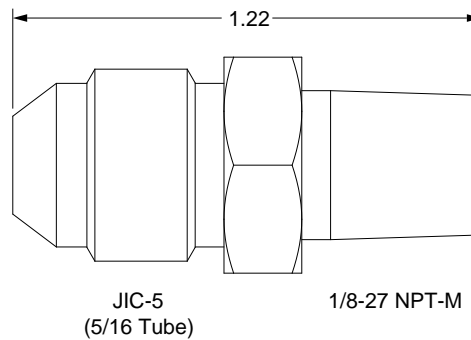
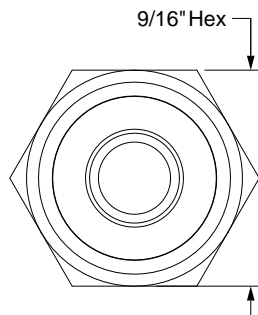
Customer SCD Drawing

A

B

C

D



A

B

C

D

GENERAL SPECIFICATIONS

Material: CA360 Brass

Weight: 0.7 oz [20 g]

HPD Pressure Rating: 3300 PSI (Dynamic)

Temperature Range: -50°F to +130°F [-45°C to +55°C]

Clean: For Oxygen Service

UNLESS OTHERWISE SPECIFIED, DIMENSIONS
ARE IN INCHES. TOLERANCES ARE:

0.X ±0.015

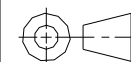
ANGLES ±3°

0.XX ±0.010

FRACTIONS ±1/64

0.XXX ±0.005

INTERPRET GD&T PER ASME 14.5

THIRD ANGLE
PROJECTIONDO NOT SCALE
DRAWINGDRAWN SGO
2016-11-09

CHECKED

ENGINEER

APPROVED

**MOUNTAIN HIGH E&S CO.
REDMOND, OR. USA**THIS DOCUMENT AND ALL TECHNICAL DATA HEREON DISCLOSED ARE PROPERTY OF MOUNTAIN HIGH E&S CO. AND
SHALL NOT BE USED, RELEASED OR DISCLOSED IN WHOLE OR PART WITHOUT WRITTEN PERMISSION FROM MOUNTAIN
HIGH E&S CO. THIS DOCUMENT MUST BE RETURNED TO MOUNTAIN HIGH E&S CO. IMMEDIATELY UPON REQUEST.DWG TITLE
**Tube Fitting, Adapter,
JIC-5 37° 5/16 Tube x 1/8-27 NPT Male**DWG NUMBER
5SHDW-111-000DWG REV.
-0INV. PART
NUMBER 00HDW-0111-00PRODUCT
NAMEDWG FORMAT:
ESR-002 Rev H [17]DWG
SCALEDWG
SHEET

1 OF 1

DWG SIZE
A
11x8½

1

2

3

4