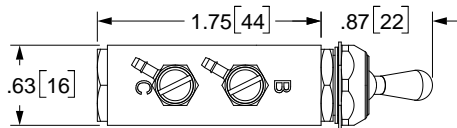


1

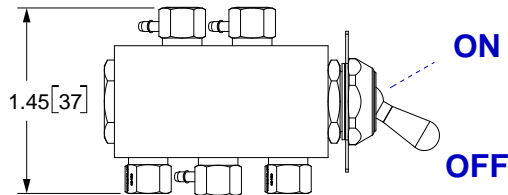
2

3

4

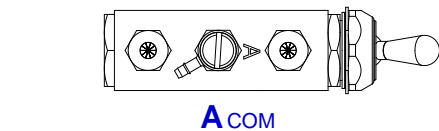
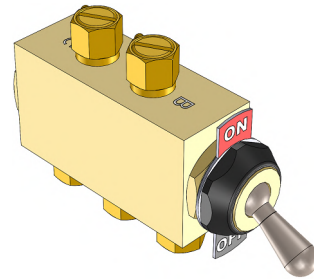


C.N.O. B.N.C.

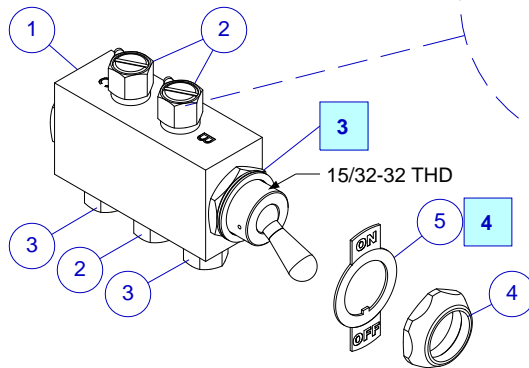


ON

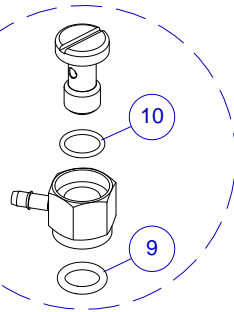
OFF



A.COM



15/32-32 THD

**Key**

- 1 Item #
- 1 Note

| REV | ECO | Release | Drawn | REVISION HISTORY |
|-----|----------|------------|-------|------------------|
| B1 | 2018-030 | 2018-10-05 | SGO | Customer Drawing |

GENERAL SPECIFICATIONS

Material: Brass, Stainless Steel
 Weight: 4.6 oz [130 g]

Mounting Hole: Ø.500[½"]; 12mm
 Mounting Thread: 15/32-32 UNS
 Control Ports: #10-32 UNF

Pressure Rating: 150 PSIG MAX
 Temp Range: -15°F to +400°F [-29°C to +204°C]

Notes

- Banjo-style tube-barb fittings (Item 2) may be reoriented as required. Loosen top portion of fitting with standard screwdriver, adjust orientation and re-tighten. Hex flats are 5/16" wrench size.
- Connect pneumatic control switch to regulator as shown in table using 1/8" OD PolyUrethane tubing provided.
- Jam nut is optional in accordance with requirements and space available. Two lockwashers are supplied with switch.
- Orient "ON/OFF" legend as shown to maintain concordance with regulator operation.
- Pneumatic Switch Kit p/n APCR0-0118-00 includes all of the fittings illustrated as well as 20 feet of each of the 3 colors of control tubing. Spare/replacement parts may be ordered separately from MH per the part numbers indicated. Tubing (Items 6, 7, 8 not shown) is ordered by the foot

Regulator Connection

| Tubing Color | Regulator Port | Switch Port |
|--------------|----------------|-------------|
| Yellow | "A" | "A" |
| Orange | "B" | "B" |
| Gray | "C" | "C" |

Replacement Parts

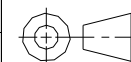
| Item | Part Number | Description |
|------|---------------|---|
| 1 | 19026-0007-01 | Pneumatic Valve/Switch |
| 2 | 19055-1002-00 | Banjo Fitting |
| 3 | 09025-0023-00 | Breather |
| 4 | 19027-0006-00 | Dress Nut |
| 5 | 50001-0003-00 | Switch Plate, "On/Off" |
| 6 | 19600-0005-00 | PolyUrethane Tubing, 1/8" OD, Yellow [Qty Feet] |
| 7 | 19600-0006-00 | PolyUrethane Tubing, 1/8" OD, Orange [Qty Feet] |
| 8 | 19600-0007-00 | PolyUrethane Tubing, 1/8" OD, Gray [Qty Feet] |
| 9 | 09001-1516-00 | O-ring, Banjo Body, Silicone |
| 10 | 09001-1014-00 | O-ring, Banjo Stud, Silicone |

UNLESS OTHERWISE SPECIFIED, DIMENSIONS ARE IN INCHES. TOLERANCES ARE:

0.X ±0.015 ANGLES ± 3°
 0.XX ±0.010 FRACTIONS ± 1/64
 0.XXX ±0.005

INTERPRET GD&T PER ASME 14.5

THIRD ANGLE PROJECTION



DO NOT SCALE DRAWING

DRAWN SGO
2013-12-07

CHECKED

ENGINEER

APPROVED



MOUNTAIN HIGH E&S CO.
REDMOND, OR. USA

THIS DOCUMENT AND ALL TECHNICAL DATA HEREON DISCLOSED ARE PROPERTY OF MOUNTAIN HIGH E&S CO. AND SHALL NOT BE USED, RELEASED OR DISCLOSED IN WHOLE OR PART WITHOUT WRITTEN PERMISSION FROM MOUNTAIN HIGH E&S CO. THIS DOCUMENT MUST BE RETURNED TO MOUNTAIN HIGH E&S CO. IMMEDIATELY UPON REQUEST.

DWG TITLE **4-way Pneumatic Valve/Switch [SCD]**

DWG NUMBER **51PCR-0118-00** DWG REV. **B1**

CAD FILE APCR0-0118-00\$B1 INV. PART NUMBER APCR0-0118-00 PROD. NAME PCR 4-Way Switch Kit

DWG FORMAT: ESR-002 Rev H [20] DWG SCALE DWG SHEET 1 OF 1 DWG SIZE A 11x8½

1

2

3

Insert #: 51PCR-0118-00