

1

2

3

4

GENERAL SPECIFICATIONS

Material: UNS C36000 (CDA-360) Brass
UNS A96061 (6061-T6) Aluminum

Weight: 3.1 oz [88 g]

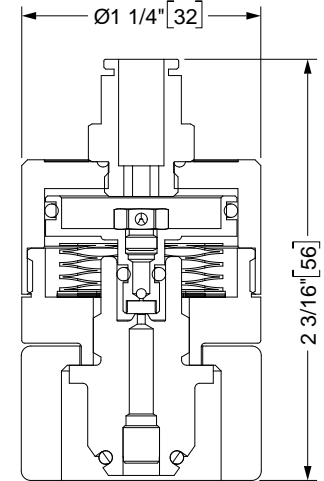
Inlet Fitting: CGA-540N
Outlet Fitting: G-1/8 BSPP x 6mm Tube

Inlet Pressure Rating: 3000 PSI MAX
Regulated Outlet: 16 ± 2 PSI (Dynamic) (NOM 1 Bar)
20 ± 2 PSI (Static)

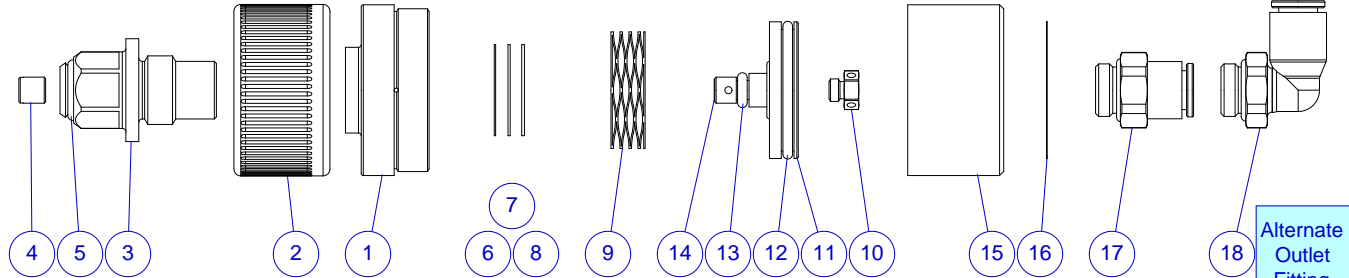
Average Flow Rate: 40 L/min
Temperature Range: -50°F to +130°F [-45°C to +55°C]

Spare O-ring: MH p/n 09001-0011-90 (CGA-540, Item #5)

REV	ECO	Release	Drawn	REVISION HISTORY
A0	2018-023	2018-08-16	SGO	Customer Reference Drawing



REF	Qty	Description
1	1	Inlet Body
2	1	Grip-Nut, CGA-540
3	1	Inlet Seat, CGA-540
4	1	Filter
5	2	O-Ring
6	A/R	Shim, .010
7	A/R	Shim, .016
8	A/R	Shim, .020
9	1	Spring
10	1	Diffuser
11	1	Piston
12	1	O-Ring
13	1	O-Ring
14	1	Puck
15	1	Outlet Body Axial
16	1	Label
17	1	Outlet Fitting, 6mm tube, Straight
18	1	Outlet Fitting, 6mm tube, 90° Elbow



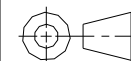
UNLESS OTHERWISE SPECIFIED, DIMENSIONS ARE IN INCHES. TOLERANCES ARE:

0.X ±0.015
0.XX ±0.010
0.XXX ±0.005

ANGLES ± 3°
FRACTIONS ± 1/64

INTERPRET GD&T PER ASME 14.5

THIRD ANGLE PROJECTION



DO NOT SCALE DRAWING

DRAWN SGO
2018-08-13

CHECKED

ENGINEER

APPROVED

MH

**MOUNTAIN HIGH E&S CO.
REDMOND, OR. USA**

THIS DOCUMENT AND ALL TECHNICAL DATA HEREON DISCLOSED ARE PROPERTY OF MOUNTAIN HIGH E&S CO. AND SHALL NOT BE USED, RELEASED OR DISCLOSED IN WHOLE OR PART WITHOUT WRITTEN PERMISSION FROM MOUNTAIN HIGH E&S CO. THIS DOCUMENT MUST BE RETURNED TO MOUNTAIN HIGH E&S CO. IMMEDIATELY UPON REQUEST.

DWG TITLE
HP/HF Regulator, CGA-540 x 6mm Tube, Axial [SCD]

DWG NUMBER
5SREG-1090-01

DWG FILE
00REG-1090-01\$A0

DWG SCALE
ESR-002 Rev H [20]

DWG REV.
A0

INV. PART NUMBER
00REG-1090-01

PROD. NAME
HP/HF-CGA-1P-A

DWG SHEET
1 OF 1

DWG SIZE
A
11x8½

1

2

3

4