

GENERAL SPECIFICATIONS

Materials: UNS C36000 (CDA-360) Brass
 UNS A96061 (6061-T6) Aluminum

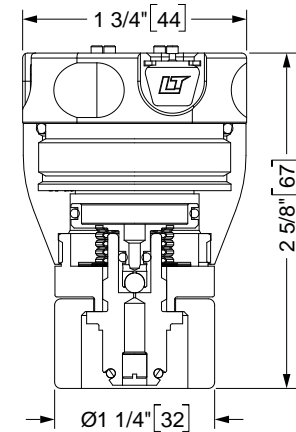
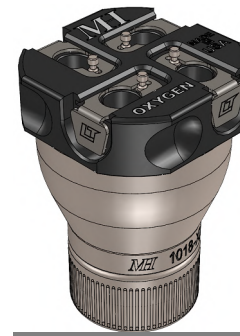
Weight: 5.7 oz [162 g]

Inlet Fitting: CGA-540
 Outlet Ports: Industry-standard 5/16 Quick-Disconnect Socket w/ Check-Valve

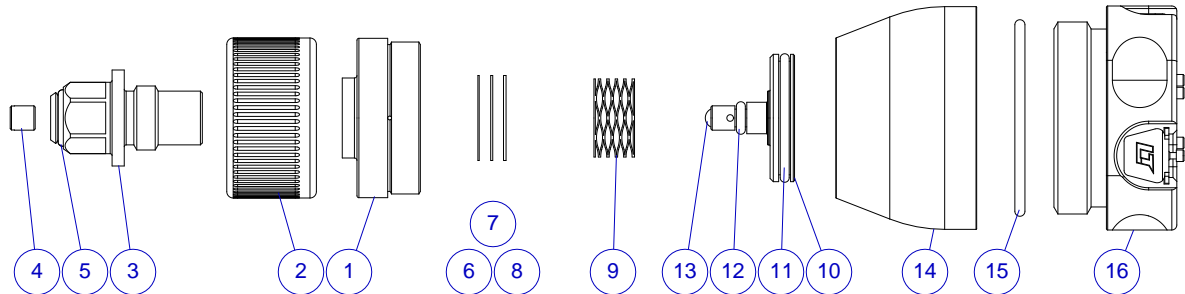
Inlet Pressure Rating: 3000 PSI MAX
 Regulated Outlet: 18 ± 2 PSI (NOM 1 Bar)
 Average Flow Rate: 40 L/min
 Temperature Range: -50°F to +130°F [-45°C to +55°C]

Spare O-ring: MH p/n 09001-0011-90 (CGA-540, Item #5)

REV	ECO	Release	Drawn	REVISION HISTORY
L0	2016-050	2016-10-11	SGO	REG-1018 Assy SCD



REF	Qty	Description
1	1	Inlet Body
2	1	Grip-Nut, CGA-540
3	1	Inlet Seat, CGA-540
4	1	Filter
5	2	O-Ring
6	A/R	Shim, .010
7	A/R	Shim, .016
8	A/R	Shim, .020
9	1	Spring
10	1	Piston
11	1	O-Ring
12	1	O-Ring
13	1	Ball
14	1	Outlet Body, 4-place
15	1	O-Ring
16	1	FPR Outlet Cap Assy



UNLESS OTHERWISE SPECIFIED, DIMENSIONS ARE IN INCHES. TOLERANCES ARE:
 0.X ±0.015
 0.XX ±0.010
 0.XXX ±0.005

ANGLES ± 3°
 FRACTIONS ± 1/8

INTERPRET GD&T PER ASME 14.5

MH MOUNTAIN HIGH E&S CO. REDMOND, OR. USA

THIS DOCUMENT AND ALL TECHNICAL DATA HEREON DISCLOSED ARE PROPERTY OF MOUNTAIN HIGH E&S CO. AND SHALL NOT BE USED, RELEASED OR DISCLOSED IN WHOLE OR PART WITHOUT WRITTEN PERMISSION FROM MOUNTAIN HIGH E&S CO. THIS DOCUMENT MUST BE RETURNED TO MOUNTAIN HIGH E&S CO. IMMEDIATELY UPON REQUEST.

THIRD ANGLE PROJECTION	DRAWN SGO 2016-09-23	Customer Drawing, FPR Regulator, CGA-540 x 4QD, Axial [SCD]	
CHECKED	ENGINEER	DWG NUMBER 5SREG-1018-00	DWG REV. L0
APPROVED	DWG FORMAT: ESR-002 Rev H [17]	DWG SCALE	DWG SHEET 1 OF 1 DWG SIZE A 11x8½