

4

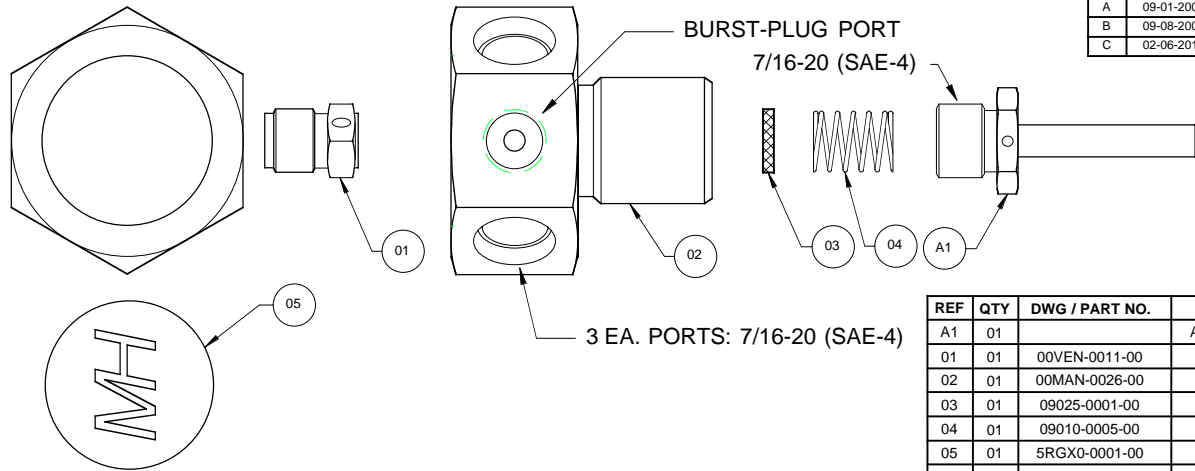
3

2

1

REVISION HISTORY

REV	DA-MO-YR	E. C. O. / APPR.	NOTES
A	09-01-2006	SBW	UPDATE PART NUMBERS
B	09-08-2006	PLM	UPDATE NOTE DETAILS
C	02-06-2015	PLM	CONSOLIDATED TO ONE DRAWING & UPDATED TORQUE SPECS

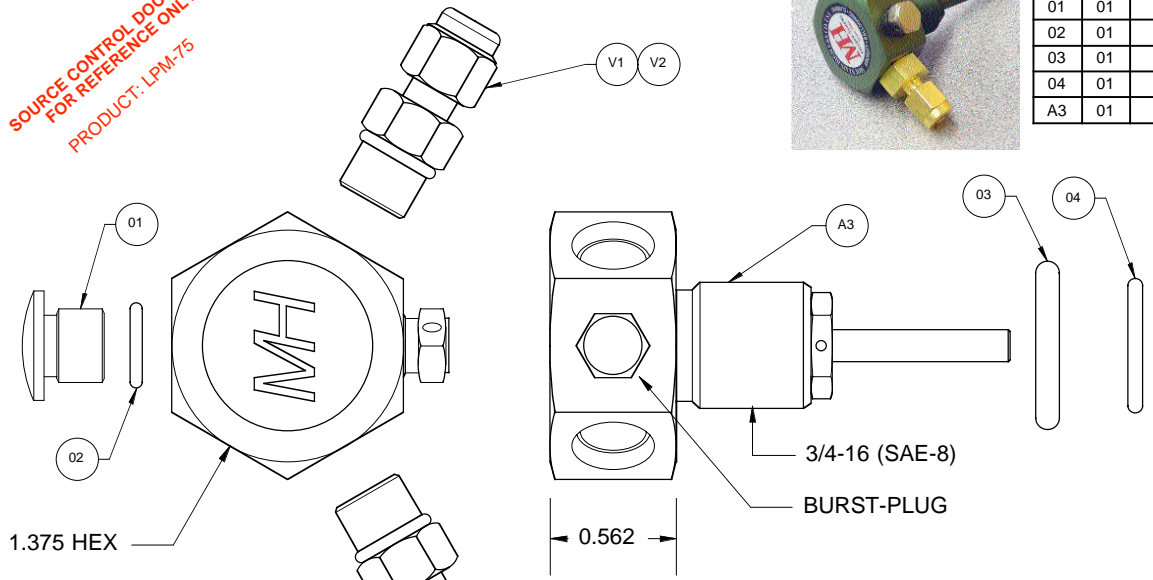


REF	QTY	DWG / PART NO.	SUB-ASSY.	NOMENCLATURE
A1	01		ARV01-0120-00	ASSY: DIP-TUBE, MOUNTAIN-HIGH
01	01	00VEN-0011-00		BURST-PLUG: (1800 PSIG. SERVICE NOMINAL)
02	01	00MAN-0026-00		MANIFOLD: LPM-75, LOW-PROFILE PICK-OFF
03	01	09025-0001-00		FILTER: DISC, D.3750.063B-40
04	01	09010-0005-00		COIL SPRING
05	01	5RGX0-0001-00		LABEL: 1" DIE-CUT ROUND PRODUCT LABEL

SOURCE CONTROL DOCUMENT
FOR REFERENCE ONLY
PRODUCT: LPM-75



REF	QTY	DWG / PART NO.	NOMENCLATURE
V1	01	00HDW-0108-00	FITTING: BRASS, SAE-4 - 1/8" OD TUBE
V2	01	00HDW-0110-00	FITTING: BRASS, SAE-4 - 3/16" OD TUBE
01	01	19035-0004-00	PLUG: SAE-4
02	01	09001-0904-70	O-RING: 3-904 EPDM-70 (SAE-4)
03	01	09001-0210-90	O-RING: 1 1/16" OD X 3/4" ID EPDM-90, FOR MSS PORT CYLINDERS
04	01	09001-0908-70	O-RING: 3-908 EPDM-70, FOR SAE-8 PORT CYLINDERS
A3	01	CM01-101	ASSEMBLY, SERVICE PRESSURE FUNCTION OF HPRD INSTALLED



- NOTES:**
- MATERIAL: ITEM 02: A96061 (QQ-A-255/8) 6061-T651 ALUMINUM.
 - FINISH: ANODIZE PER MIL-A-8625 TYPE II, CLASS 2 GREEN.
 - CLEAN: FOR OXYGEN SERVICE PER GAP-008 (MIL-027210, TYPE 1)
 - SERVICE PRESSURE: FUNCTION OF HPRD INSTALLED, NOMINALLY 1800 PSIG. @ 45°C (SERVICE PRESSURE: UP TO 3,000 PSIG. @ 30°C)
 - TEST PRESSURE: 4,500 PSIG. @ 25°C
 - WEIGHT: 2 OZ. PART 00MAN-0026-00 ONLY
 - MARKING: PER IN-HOUSE DOCUMENT ESR-005

ASSEMBLY: (Please take notice of IN/LBS & FT/LBS)

- 01:** TORQUE ITEMS V1, V2 AND 01 TO 60 ± 5 IN/LBS.
02: TORQUE ITEM A1 ON CYLINDER TO 60 ± 5 FT/LBS.

51MAN-002X-00

THIRD ANGLE PROJECTION. [KC] NUMBER OF KEY CHARACTERISTICS IN THIS DRAWING / DOCUMENT PER MH DOC: ESR-001

MOUNTAIN HIGH E&S CO. REDMOND, OR. USA

ISSUED:	DA-MO-YR	MANIF: CYL. SAE-8 to SAE-4 x 120°
DRAWN: PLM	05-17-1999	DWG. #: CM01-101-00 (SCD) REV C
ENGINEER: PLM	05-17-1999	SIZE A SHEET 1 OF 1 DO NOT SCALE DRAWING
APPR: PLM	05-17-1999	

4

3

2

1