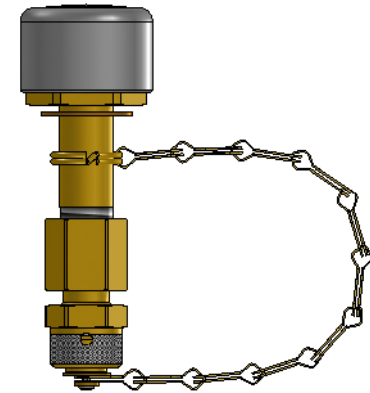
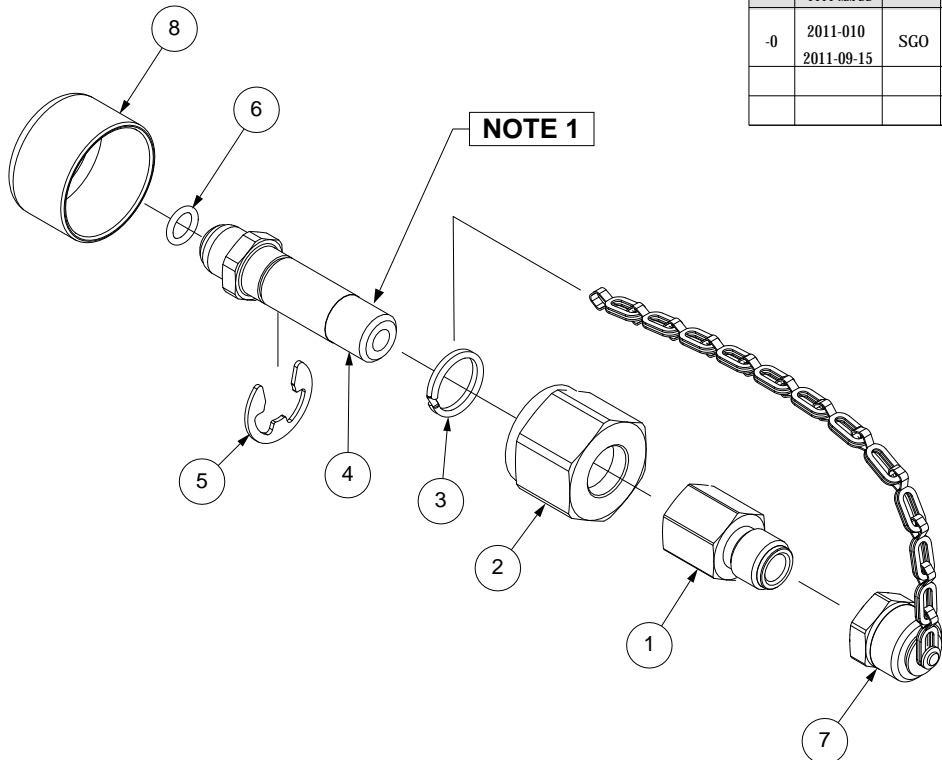


1 2 3 4

REVISION HISTORY			
REV	ECO NO. YYYY-MM-DD	NAME	NOTES
-0	2011-010 2011-09-15	SGO	INITIAL RELEASE



**NOTES:**

- [1] APPLY TEFLON TAPE WHERE INDICATED PRIOR TO ASSEMBLY
- 2. PRESSURE-TEST TO 3000 PSIG AFTER ASSEMBLY
- 3. CLEAN: PER IN-HOUSE DOCUMENT ESR-008

REF	QTY	Part Number	Rev	Description
1	1	0CV04-0201-03	-1	Adapter, Brass, Scott 9/16-18M to 1/4 NPT-F
2	1	00HDW-0358-00		CGA-540 Nut, Brass
3	1	09004-0006-05		Split-ring, Brass, Ø.740od x Ø.596id x .105h
4	1	00HDW-0370-01	C	Nipple, CGA-540 Modification
5	1	09005-0001-00		Retaining Ring, 5/8 E-Rin
6	1	09001-0011-90		O-Ring, Viton, 2-011, V90
7	1	0CP02-0103-01	-0	Cap & Chain Assembly, Scott 9/16-18
8	1	00VEN-0020-00		Dust Cap, Ø1.25id (CGA-540)

UNLESS OTHERWISE SPECIFIED, DIMENSIONS ARE IN INCHES. TOLERANCES ARE:  
 0.X ±0.015 ANGLES ±0.5°  
 0.XX ±0.010 FRACTIONS ±1/64  
 0.XXX ±0.005

INTERPRET GD&T PER ASME 14.5 FMT REV.H

THIRD ANGLE PROJECTION

DO NOT SCALE DRAWING

DRAWN	SGO
[YYYY-MM-DD]	2011-09-13
CHECKED	HBS
[YYYY-MM-DD]	2011-09-15
ENGINEER	TD
[YYYY-MM-DD]	2011-09-15
APPROVED	RJ
[YYYY-MM-DD]	2011-09-15

**MH MOUNTAIN HIGH E&S CO. REDMOND, OR. USA**

THIS DOCUMENT AND ALL TECHNICAL DATA HEREON DISCLOSED ARE PROPERTY OF MOUNTAIN HIGH E&S CO. AND SHALL NOT BE USED, RELEASED OR DISCLOSED IN WHOLE OR PART WITHOUT WRITTEN PERMISSION FROM MOUNTAIN HIGH E&S CO. THIS DOCUMENT MUST BE RETURNED TO MOUNTAIN HIGH E&S CO. IMMEDIATELY UPON REQUEST.

DWG NUMBER **00GSE-1032-00** DWG REV. **-0**

DWG TITLE **Transfiller Adapter Assy, CGA-540N to 9/16-18M Scott, w/ Cap**

CATALOG ITEM NO. [xxx-xxxx-xx] DWG SCALE 1:2 DWG SHEET 1 OF 1 DWG SIZE A

1 2 3 4