

4

3

2

1

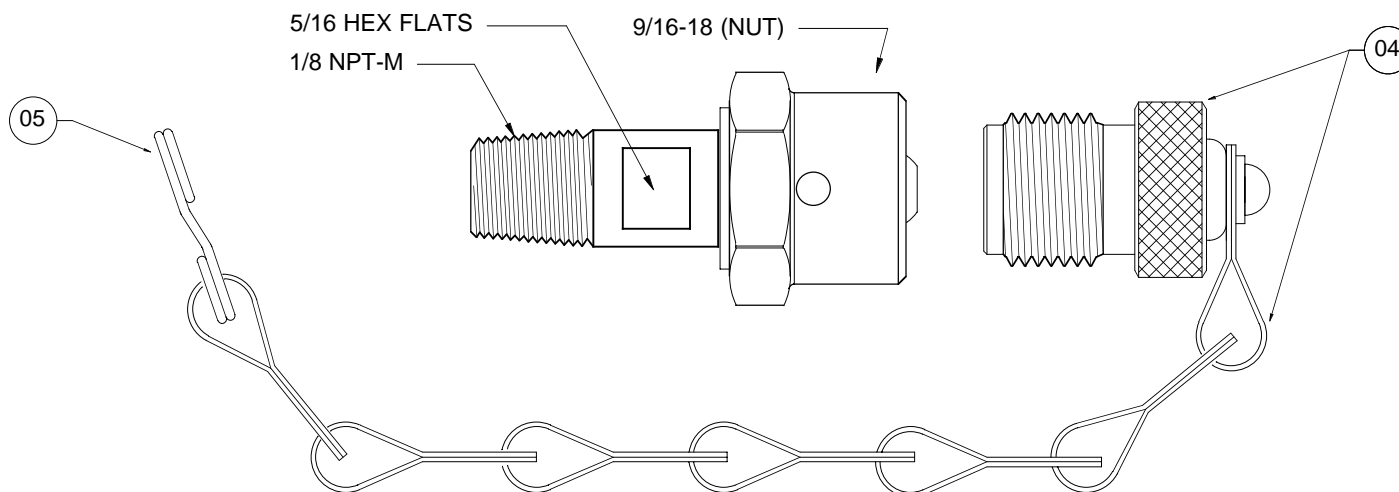
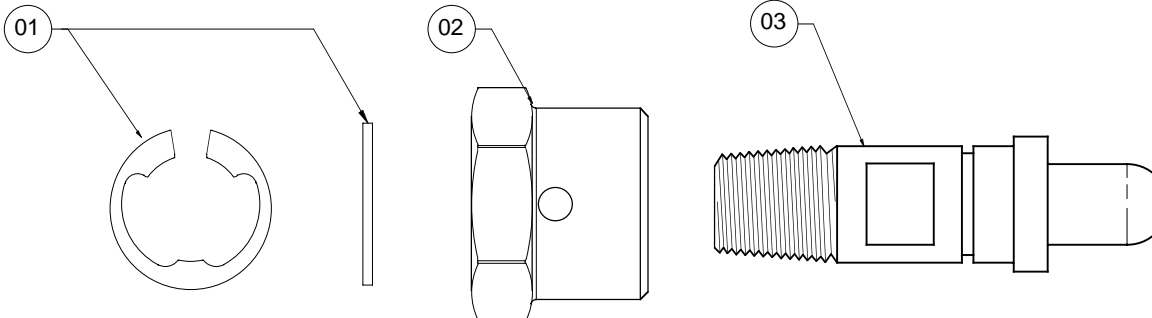
GENERAL SPECIFICATIONS

MATERIAL: CDA BRASS B124/CA377 PER SAE J514, J530

PRESSURE RATING: 3000 PSIG.
SAFETY FACTOR: 2:1
WEIGHT: 1.7 oz. (48 g)CLEAN: PER AIR 1176A SEC. 5 (CGA G-4.1)
MFG. / VEN. CODE: MH

REVISION HISTORY (version roll-offs are kept onfile)

REV	MO-DA-YR	NEG / ECO	NAME	NOTES
-	05-06-01		PLM	INITIAL RELEASE
A	12-05-11		HBS / PLM	ADDED CAP & CHAIN ASSY
B	10-10-2013		HBS / PLM	CHANGED NUT TYPE FROM -000 TO -001 & UPDATED FORMAT



**ASSY. DETAIL FOR
PRODUCT ITEM 00GSE-1038-00
INSERT # 5IGSE-1038-00**

REF	QTY	DWG / PART NO.	REV	SUB-ASSY.	NOMENCLATURE
01	01	09005-0002-00	-	-	RING, RETAINING
02	01	0TA01-0201-01	-	-	NUT, HEX 9/16-18 (VENT)
03	01	0TA01-0205-00	-	-	FITTING, 1/8 NPT-M TO AS1219 (SCOTT, AIRLINE)
04	01	0CP02-0102-01			CAP & CHAIN ASSY. 9/16-18
05	01	09004-0006-05			SPLIT-RING, 0.740"

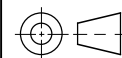
UNLESS OTHERWISE SPECIFIED DIMS ARE IN INCHES.
TOLERANCES ARE:

0.X	±0.015	ANGLES	FRACTIONS	63 ✓
0.XX	±0.010	± 0.5°	± 1/64	
0.XXX	±0.005			

INTERPRET GD&T PER ASME 14.5 FMT REV H

ORIGINAL MO-DA-YR	PLM, 06-15-01	MATERIAL	⚠
ENGINEER MO-DA-YR	PLM, 06-15-01	FINISH	⚠
DRAWN MO-DA-YR	PLM, 06-15-01	CLEAN	⚠
CHECKED MO-DA-YR	-	MARKING	⚠

THIRD ANGLE PROJECTION



DO NOT SCALE DRAWING

MH

MOUNTAIN HIGH
E&S CO.
REDMOND, OR. USA

[KC]

NUMBER OF KEY CHARACTERISTICS
IN THIS DRAWING / DOCUMENT
PER MH DOC: ESR-001

00

DWG. TITLE	ASSY, NPT 1/8 to SCOTT TYPE (SCD)	DWG. REVISION	REV B	DWG. SIZE	A
DWG. NUMBER	TA01-113-000 (SCD)	DWG. SHEETS	1 OF 1		
CAD FILE NUMBER	TA54-540 AL-Type: -113 ASSY	CAT ITEM NUMBER	00GSE-1038-00		

4

3

2

1

D

D

C

C

B

B

A

A