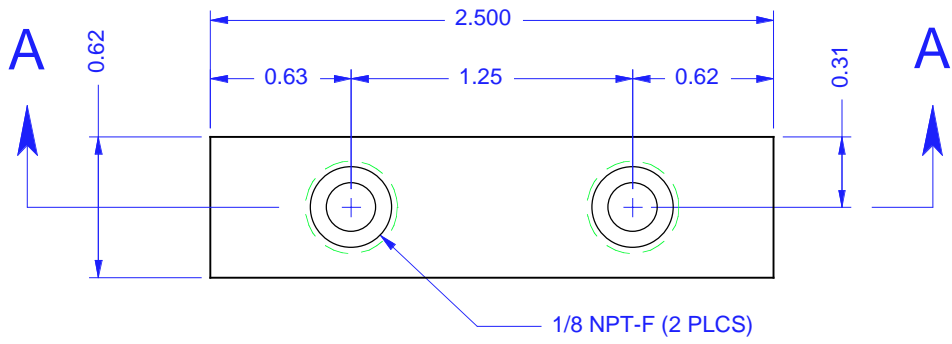


- NOTES:**
 1. MATERIAL: A96061 (QQ-A-225/8) 6061-T651 ALUMINUM.
 2. FINISH: ANODIZE PER MIL-A-8625 TYPE II, CLASS 2 GREEN.
 3. CLEAN: UNLESS OTHERWISE SPECIFIED, PER AIR-1176A SEC. 5.
 4. MARKING: UNLESS OTHERWISE SPECIFIED, PER IN-HOUSE DOCUMENT ESR-005.

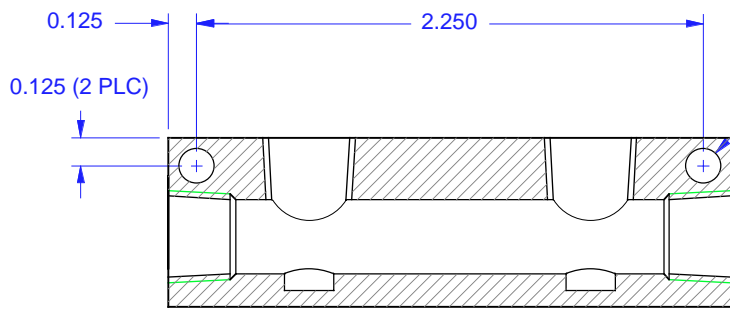
Weight: 37 g. (1.3 Oz.)

REVISION HISTORY			
REV	DATE	E. C. O. / APPR.	NOTES
A	10-12-00	PLM	CHANGED TO NEW FORMAT & DWG. NO. SYS.
B	16-05-2013	HBS / PLM	UPDATED WITH SECTION DETAIL

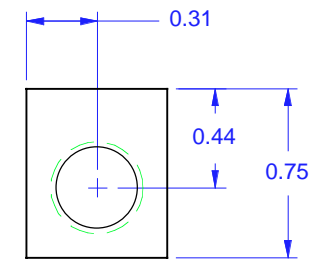
SOURCE CONTROL DOCUMENT
FOR REFERENCE ONLY



1/8 NPT-F (2 PLCS)



Ø 0.155 THRU (2 PLC)
1/8 NPT-F THRU (2 PLCS)



'AA'

UNLESS OTHERWISE SPECIFIED DIMS ARE IN INCHES. TOLERANCES ARE:		THIRD ANGLE PROJECTION.	<CR> KEY CHARACTERISTICS	NO. -0-
0.X ±0.015	ANGLES ± 0.5°		<MA> PER CORP. DOC: ESR-001	
0.XX ±0.010	FRACTIONS ± 1/64		MOUNTAIN HIGH E&S CO. REDMOND, OR. USA	
0.XXX ±0.005				
INTERPRET DIM AND TOL PER ASME Y14.5				
ISSUED:	11-05-99	MATERIAL:	NOTE 1	MANIF. 1/8 NPT L. P. 2 PLC.
DRAWN:	TEM	11-05-99	FINISH:	NOTE 2
ENGINEER:	TEM	11-05-99	CLEAN:	NOTE 3
APPR:	PLM	11-05-99	MARKING:	NOTE 4
		SIZE	A	SHEET 1 OF 1
				DO NOT SCALE DRAWING

SOURCE CONTROL DOCUMENT
INSERT No. 51MAN-0002-01

PRODUCT: LPO-2
ITEM No.: 00MAN-0002-01

D
C
B
A

D
C
B
A

4

3

2

1

4

3

2

1