

4

3

2

1

**NOTES:**

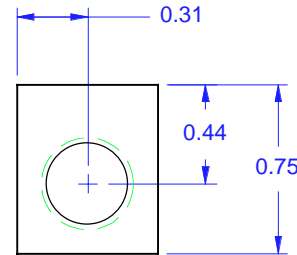
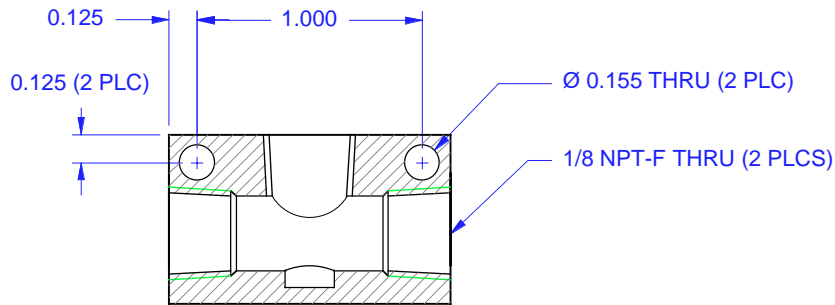
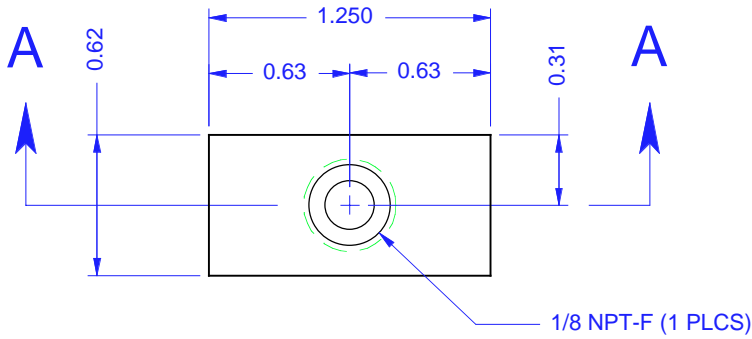
- 1. MATERIAL: A96061 (QQ-A-225/8) 6061-T651 ALUMINUM.
- 2. FINISH: ANODIZE PER MIL-A-8625 TYPE II, CLASS 2 GREEN.
- 3. CLEAN: UNLESS OTHERWISE SPECIFIED, PER AIR-1176A SEC. 5.
- 4. MARKING: UNLESS OTHERWISE SPECIFIED, PER IN-HOUSE DOCUMENT ESR-005.

Weight: 19 g. (0.67 OZ.)

**REVISION HISTORY**

REV	DATE	E. C. O. / APPR.	NOTES
A	10-12-00	PLM	CHANGED TO NEW FORMAT & DWG. NO. SYS.
B	16-05-2013	HBS / PLM	UPDATED WITH SECTION DETAIL

SOURCE CONTROL DOCUMENT  
FOR REFERENCE ONLY



'AA'

SOURCE CONTROL DOCUMENT  
INSERT No. 5IMAN-0001-01

PRODUCT: LPO-1  
ITEM No.: 00MAN-0001-01

UNLESS OTHERWISE SPECIFIED DIMS ARE IN INCHES. TOLERANCES ARE:		THIRD ANGLE PROJECTION.	<CR> KEY CHARACTERISTICS	NO. -0-
0.X ±0.015	ANGLES ±0.5°		<MA> PER CORP. DOC: ESR-001	
0.XX ±0.010	FRACTIONS ± 1/64		 MOUNTAIN HIGH E&S CO. REDMOND, OR. USA	
0.XXX ±0.005				
INTERPRET DIM AND TOL PER ASME Y14.5				
ISSUED:	11-05-99	MATERIAL:	NOTE 1	
DRAWN:	TEM	FINISH:	NOTE 2	
ENGINEER:	TEM	CLEAN:	NOTE 3	
APPR:	PLM	MARKING:	NOTE 4	
		MANIF. 1/8 NPT L. P. 1 PLC.		
		DWG. #: MN01-051 (SCD)		REV B
SIZE A	SHEET 1 OF 1	DO NOT SCALE DRAWING		

4

3

2

1