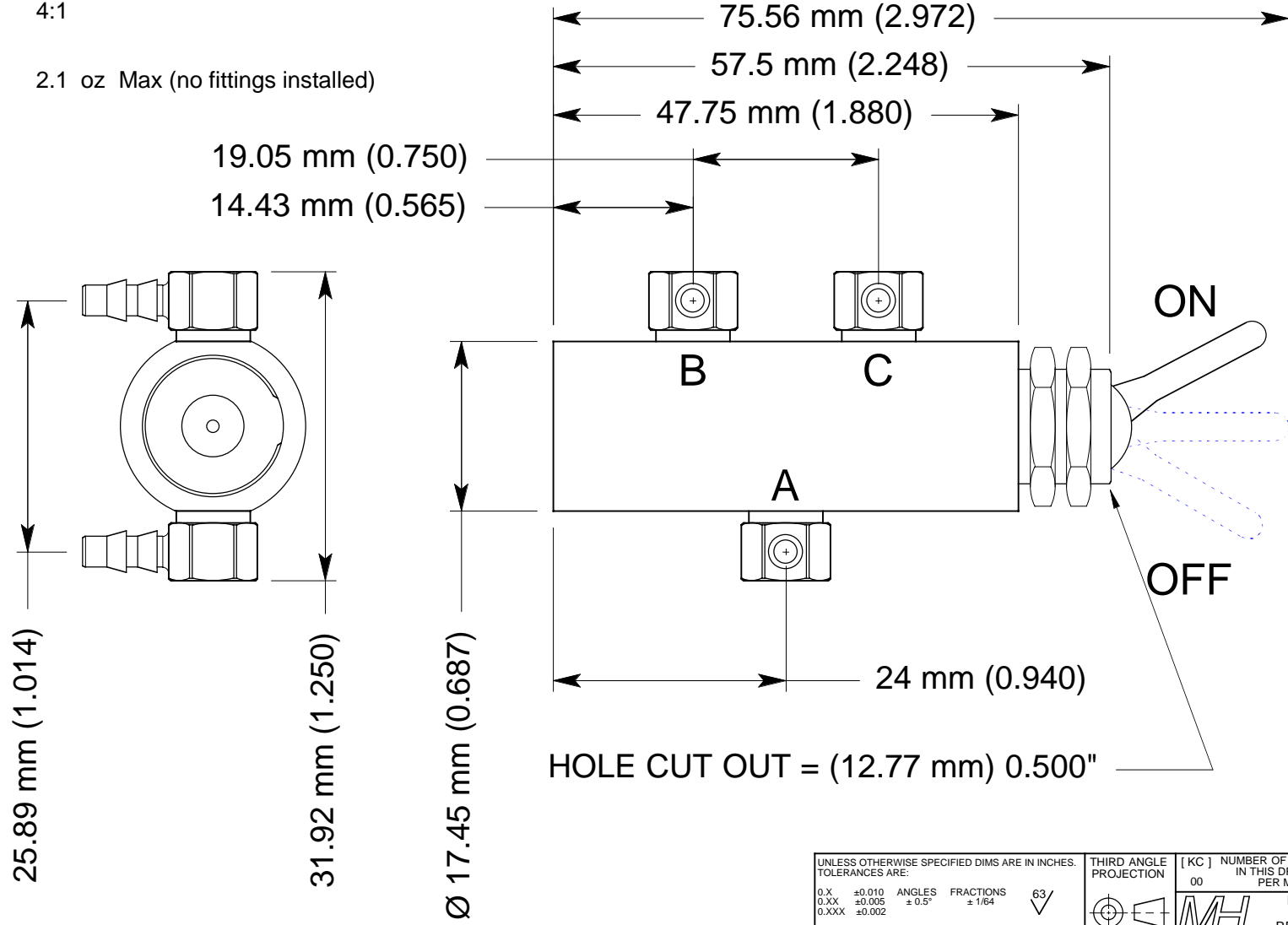



General Specifications

Service Gas: Oxygen per MIL-027210, Type 1
 Operating Pressure: 0-65 psig. (2 bar)
 Construction: Main Body 6061-T6 Alum.
 Anodize Per MIL-A-8625 Type II
 Fitting Connections: Brass (10-32 BANJO)
 Safety Factor: 4:1
 Weight: 2.1 oz Max (no fittings installed)

REVISION HISTORY			
REV	MO-DA-YR	E. C. O. / APPR.	NOTES
-	01-30-11	PLM	INITIAL ISSUE OF DESMODROMIC CONTROL SWITCH VERSION



UNLESS OTHERWISE SPECIFIED DIMS ARE IN INCHES.		THIRD ANGLE PROJECTION	[KC] NUMBER OF KEY CHARACTERISTICS IN THIS DRAWING / DOCUMENT 00
0.X ±0.010	ANGLES ±0.5°	FRACTIONS 63/	PER MH DOC: ESR-001
0.XX ±0.005			 MOUNTAIN HIGH E&S CO. REDMOND, OR. USA
0.XXX ±0.002			
INTERPRET GD&T PER ASME 14.5 (FMT REV C)			
ISSUED:	MO-DA-YR	PCR/RCV DESMO Control Switch	
DRAWN: PLM	06-10-10	DWG. #: ØPCRØ-ØØ57-ØØ	
ENGINEER: PLM	06-10-10	REV -	
APPR:	DATE	SIZE A	SHEET 1 OF 1 DO NOT SCALE DRAWING