

4

3

2

1

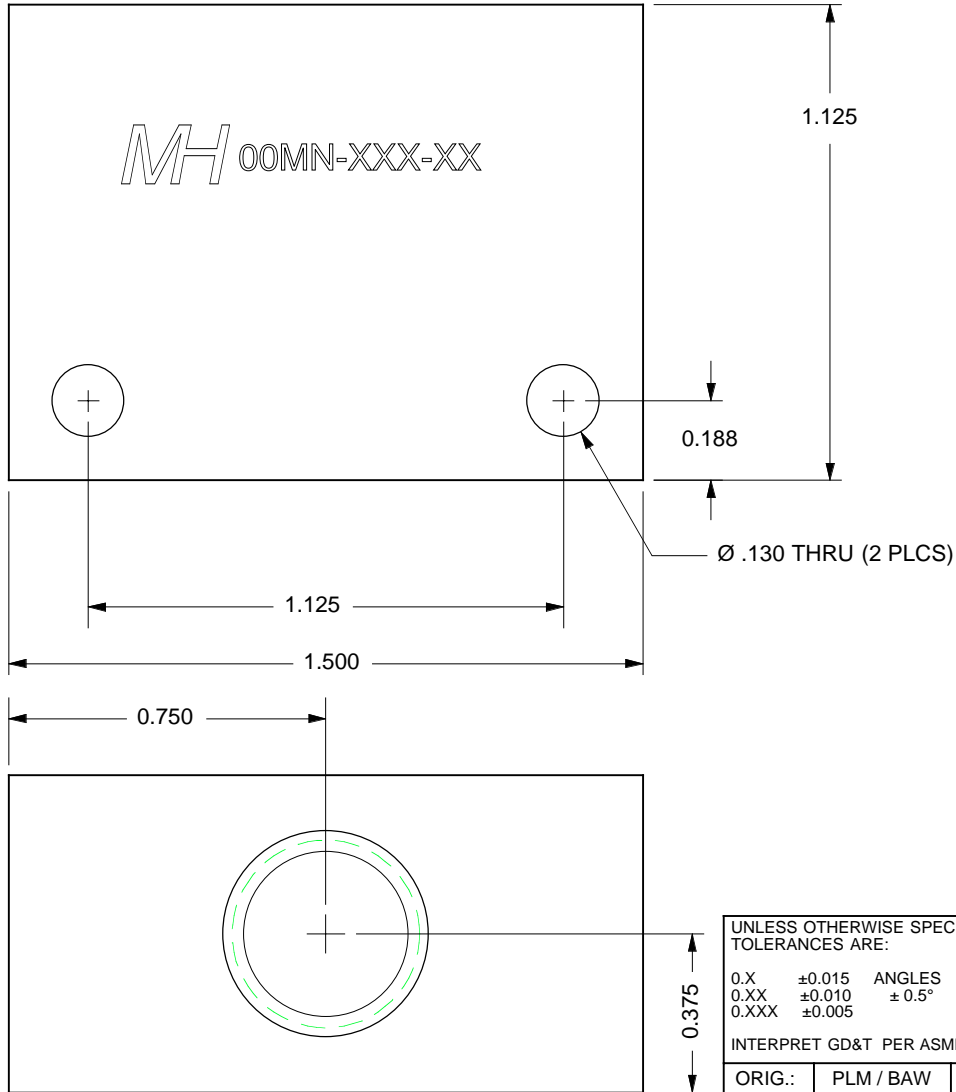
**NOTES:**  
UNLESS OTHERWISE SPECIFIED IN THE QR OR PO, THE FOLLOWING SHALL APPLY

- 1. MATERIAL: A96061, ASTM B209 6061-T651 ALUMINUM.
- 2. FINISH: ANODIZE PER MIL-A-8625 TYPE II, CLASS 2 GREEN
- 3. CLEAN: PER IN HOUSE DOCUMENT: ESR-008
- 4. MARKING: PER IN-HOUSE DOCUMENT ESR-005

**REMOVE ALL BURRS & SHARP EDGES**

0.390 THRU, SAE-4-F PORT (3 PLCS)

THIS DOCUMENT AND ALL TECHNICAL DATA HEREON DISCLOSED ARE PROPERTY OF MOUNTAIN HIGH E&S CO. AND SHALL NOT BE USED, RELEASED OR DISCLOSED IN WHOLE OR PART WITHOUT WRITTEN PERMISSION FROM MOUNTAIN HIGH E&S CO. THIS DOCUMENT MUST BE RETURNED TO MOUNTAIN HIGH E&S CO. IMMEDIATELY UPON REQUEST.



MH OOMN-XXX-XX

REVISION HISTORY				
REV	MO-DA-YR	ECO NUM	NAME	NOTES
-	11-15-98		PLM / BAW	INITIAL DRAFT
A	06-23-07	PLM	PLM	UPGRADED TO NEW FORMAT
B	07-07-07	PLM	PLM	ADDED PART MARKING DETAIL

**SOURCE CONTROL DOCUMENT FOR REFERENCE ONLY**

UNLESS OTHERWISE SPECIFIED DIMS ARE IN INCHES. TOLERANCES ARE:

0.X	±0.015	ANGLES	FRACTIONS	63
0.XX	±0.010	± 0.5°	± 1/64	✓
0.XXX	±0.005			

INTERPRET GD&T PER ASME 14.5 FMT REV G

THIRD ANGLE PROJECTION  
DO NOT SCALE DRAWING

MH

MOUNTAIN HIGH E&S CO. REDMOND, OR. USA

[KC] NUMBER OF KEY CHARACTERISTICS IN THIS DRAWING / DOCUMENT PER MH DOC: ESR-001  
00

ORIG.:	PLM / BAW	11-15-98	MATERIAL:	NOTE 1	SCD: TEE MANIFOLD. SAE -4 X -4 X -4		
DRWN.:	PLM / BAW	11-15-98	FINISH:	NOTE 2	DWG. # 0ST04-050-000	REV A	SIZE A
ENG.:	PLM / BAW	11-15-98	CLEAN:	NOTE 3	INV PART NUMBER	CAT ITEM NUMBER	
APPR.:	NAME	MO-DA-YR	MARKING:	NOTE 4	SHEET 1 OF 1	CUSTOMER CODE	

4

3

2

1

D

C

B

A

D

C

B

A