

4

3

2

1

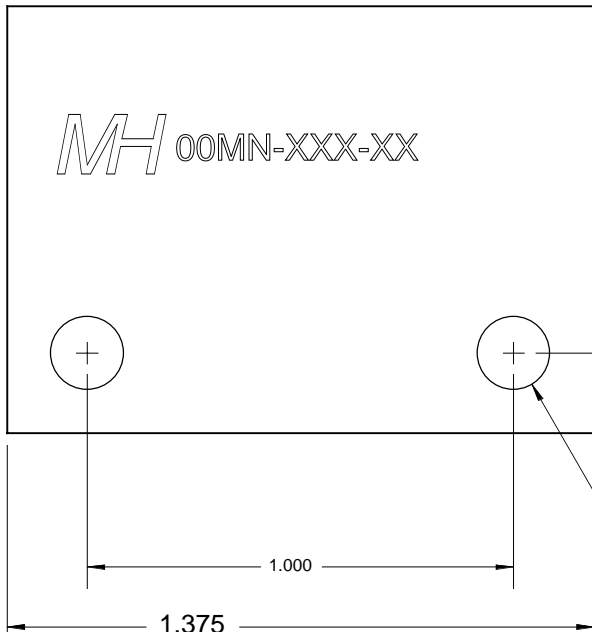
NOTES:
 UNLESS OTHERWISE SPECIFIED IN THE QR OR PO, THE FOLLOWING SHALL APPLY

1. MATERIAL: A96061, ASTM B209 6061-T651 ALUMINUM.
2. FINISH: ANODIZE PER MIL-A-8625 TYPE II, CLASS 2 GREEN
3. CLEAN: PER IN HOUSE DOCUMENT: ESR-008
4. MARKING: PER IN-HOUSE DOCUMENT ESR-005

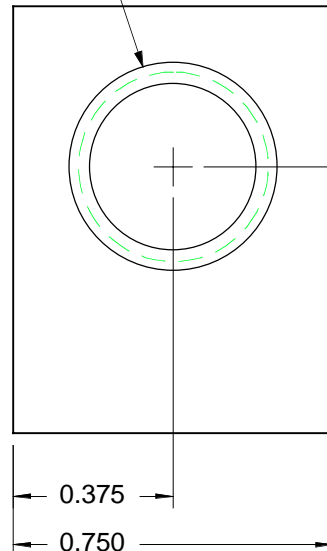
REVISION HISTORY				
REV	MO-DA-YR	ECO NUM	NAME	NOTES
-	11-15-98		PLM / BAW	INITIAL DRAFT
A	06-23-07	PLM	PLM	UPGRADED TO NEW FORMAT
B	07-07-07	PLM	PLM	ADDED PART MARKING DETAIL

REMOVE ALL BURRS & SHARP EDGES

THIS DOCUMENT AND ALL TECHNICAL DATA HEREON DISCLOSED ARE PROPERTY OF MOUNTAIN HIGH E&S CO. AND SHALL NOT BE USED, RELEASED OR DISCLOSED IN WHOLE OR PART WITHOUT WRITTEN PERMISSION FROM MOUNTAIN HIGH E&S CO. THIS DOCUMENT MUST BE RETURNED TO MOUNTAIN HIGH E&S CO. IMMEDIATELY UPON REQUEST.

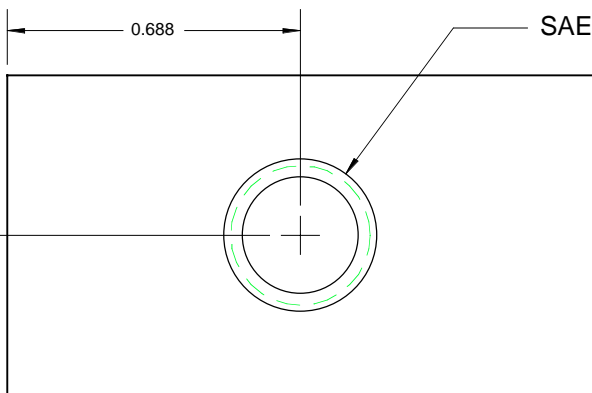


SAE-4-F PORT (2 PLCS)



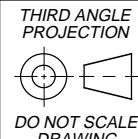
Ø 0.170 THRU (2 PLCS)

SOURCE CONTROL DOCUMENT FOR REFERENCE ONLY



SAE-2-F PORT (1 PLC)

UNLESS OTHERWISE SPECIFIED DIMS ARE IN INCHES.
 TOLERANCES ARE:
 0.X ±0.015 ANGLES FRACTIONS 63
 0.XX ±0.010 ±0.5° ± 1/64
 0.XXX ±0.005
 INTERPRET GD&T PER ASME 14.5 FMT REV G



MH MOUNTAIN HIGH E&S CO. REDMOND, OR. USA
 [KC] NUMBER OF KEY CHARACTERISTICS IN THIS DRAWING / DOCUMENT PER MH DOC: ESR-001
 00

ORIG.:	PLM / BAW	11-15-98	MATERIAL:	NOTE 1	SCD: TEE, SAE -4 X -4 X -2	
DRWN.:	PLM / BAW	11-15-98	FINISH:	NOTE 2	DWG. #: ST03-050	REV A SIZE A
ENG.:	PLM / BAW	11-15-98	CLEAN:	NOTE 3	INV PART NUMBER	CAT ITEM NUMBER
APPR.:	NAME	MO-DA-YR	MARKING:	NOTE 4	SHEET 1 OF 1	CUSTOMER CODE

4

3

2

1