

4

3

2

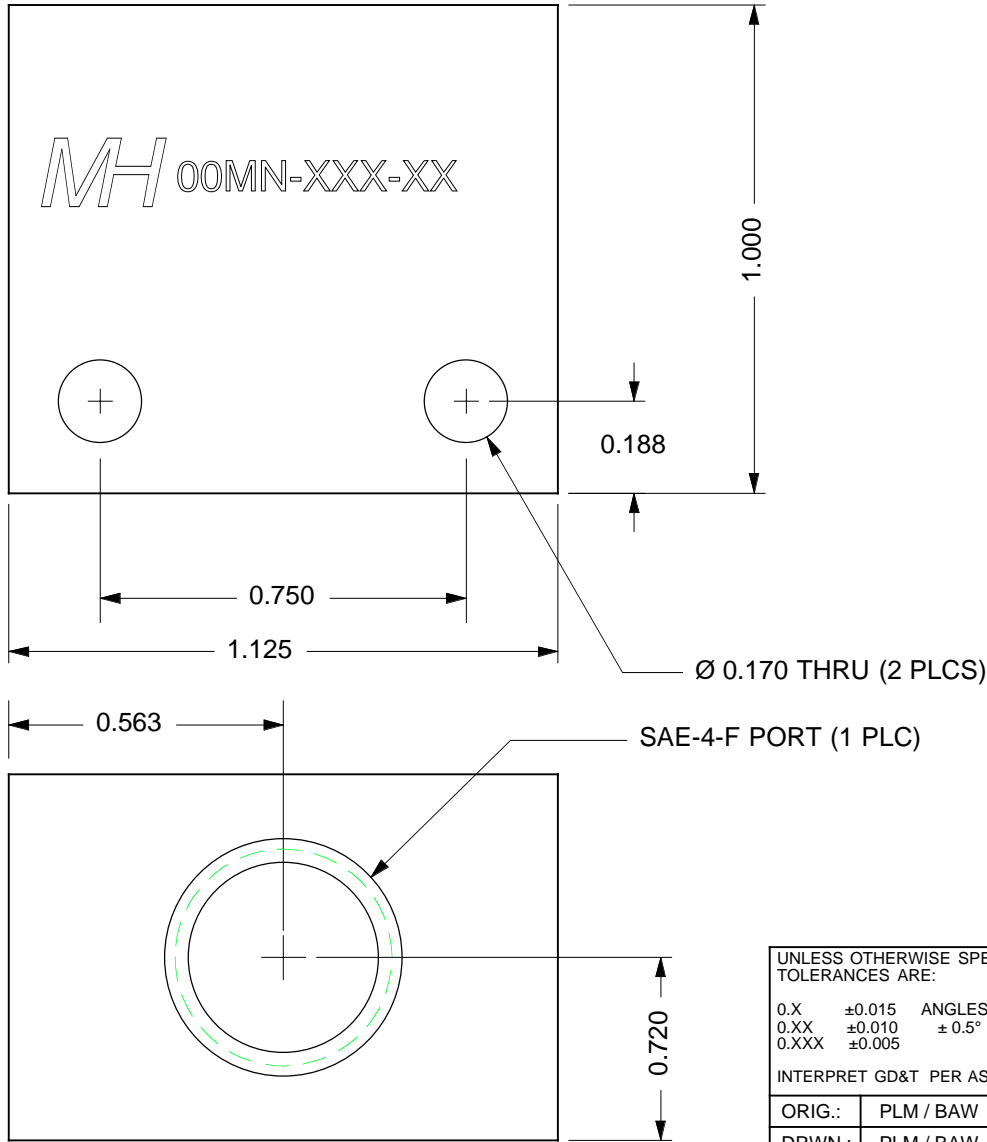
1

**NOTES:**  
 UNLESS OTHERWISE SPECIFIED IN THE QR OR PO, THE FOLLOWING SHALL APPLY

1. MATERIAL: A96061, ASTM B209 6061-T651 ALUMINUM.
2. FINISH: ANODIZE PER MIL-A-8625 TYPE II, CLASS 2 GREEN
3. CLEAN: PER IN HOUSE DOCUMENT: ESR-008
4. MARKING: PER IN-HOUSE DOCUMENT ESR-005

REVISION HISTORY				
REV	MO-DA-YR	ECO NUM	NAME	NOTES
-	11-15-98		PLM / BAW	INITIAL DRAFT
A	06-23-07	PLM	PLM	UPGRADED TO NEW FORMAT
B	07-07-07	PLM	PLM	ADDED PART MARKING DETAIL

**REMOVE ALL BURRS & SHARP EDGES**



SAE-2-F PORT (2 PLCS)

THIS DOCUMENT AND ALL TECHNICAL DATA HEREON DISCLOSED ARE PROPERTY OF MOUNTAIN HIGH E&S CO. AND SHALL NOT BE USED, RELEASED OR DISCLOSED IN WHOLE OR PART WITHOUT WRITTEN PERMISSION FROM MOUNTAIN HIGH E&S CO. THIS DOCUMENT MUST BE RETURNED TO MOUNTAIN HIGH E&S CO. IMMEDIATELY UPON REQUEST.

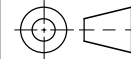
**SOURCE CONTROL DOCUMENT FOR REFERENCE ONLY**

UNLESS OTHERWISE SPECIFIED DIMS ARE IN INCHES. TOLERANCES ARE:

0.X ±0.015 ANGLES FRACTIONS 63  
 0.XX ±0.010 ±0.5° ± 1/64  
 0.XXX ±0.005

INTERPRET GD&T PER ASME 14.5 FMT REV G

THIRD ANGLE PROJECTION



DO NOT SCALE DRAWING



MOUNTAIN HIGH E&S CO. REDMOND, OR. USA

[ KC ]

00

NUMBER OF KEY CHARACTERISTICS IN THIS DRAWING / DOCUMENT PER MH DOC: ESR-001

ORIG.:	PLM / BAW	11-15-98	MATERIAL:	NOTE 1	SCD: TEE MANIFOLD. SAE -2 X -2 X -4		
DRWN.:	PLM / BAW	11-15-98	FINISH:	NOTE 2	DWG. # 0ST02-050-000	REV A	SIZE A
ENG.:	PLM / BAW	11-15-98	CLEAN:	NOTE 3	INV PART NUMBER	CAT ITEM NUMBER	
APPR.:	NAME	MO-DA-YR	MARKING:	NOTE 4	SHEET 1 OF 1	CUSTOMER CODE	

4

3

2

1