

A: OUTPUT TO GAUGE
B: +10 to +36 VDC
C: NOT USED

PIN 03 FOR USE WITH
 14V PRESSURE
 SENDING UNITS ONLY

CABLE SHIELD IS
 RECOMMENDED IF
 LENGTH IS OVER 3
 FEET

**0 to +14
 VDC**
 FROM LIGHT
 DIMMER

**0 to +28
 VDC**
 FROM LIGHT
 DIMMER

**+12 to 32
 VDC**

- 1: +12 TO +32 VDC POWER INPUT
- 2: INTERNALLY CONNECTED TO PIN 1
- 3: +12 VDC OUT FOR 14V SENDING UNITS ONLY
- 4: N/C
- 5: INPUT (4 - 20 MA PRESSURE SENDING UNIT)
- 6: EL INTERNAL LIGHTING AC INPUT
- 7: EL INTERNAL LIGHTING AC INPUT
- 8: INTERNALLY CONNECTED TO PIN 9
- 9: GROUND

DE-09
 CONNECTOR
 ON GAUGE
 BACK

- GND

- GND

- GND

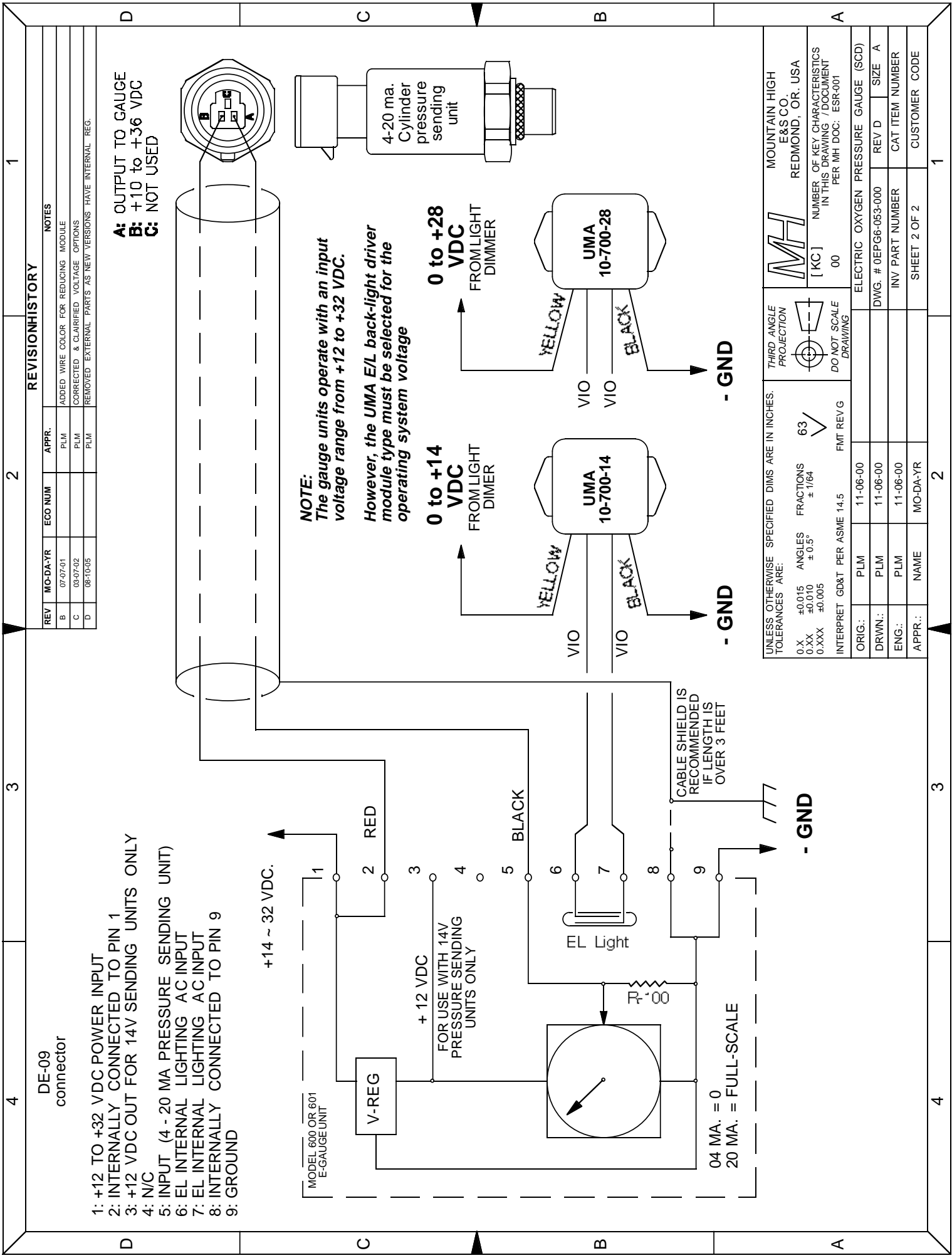
- GND

NOTE:
 The gauge units operate with an input
 voltage range from +12 to +32 VDC.
 However, the UMA E/L back-light driver
 module type must be selected for the
 operating system voltage

REVISION HISTORY

REV	MO-DA-YR	REV / ECO #	APPR	NOTES
-	06-22-07	N/A	PLM	INITIAL DRAFT

UNLESS OTHERWISE SPECIFIED DIMS ARE IN INCHES: TOLERANCES ARE:		THIRD ANGLE PROJECTION	MOUNTAIN HIGH E & S CO. REDMOND, OR, USA
0.X ±0.015	ANGLES ±0.5°	DO NOT SCALE DRAWING	[KC] NUMBER OF KEY CHARACTERISTICS IN THIS DRAWING / DOCUMENT PER NH DOC: ESR-001
0.XX ±0.010	± 1/64		
0.XXX ±0.005	FMT REV G	ELECT. OXYGEN PRESSURE GAUGE E/L CONFIG	
INTERPRET GD&T PER ASME 14.5	06-22-07	DWG. # 0EPG6-053-000 REV - A	
ORIG.: SBW / PLM	06-22-07	INV PART NUMBER CAT ITEM NUMBER	
DRWN.: SBW / PLM	06-22-07	SHEET 1 OF 2 CUSTOMER CODE	
ENG.: SBW / PLM	06-22-07		
APPR.: NAME	MO-DA-YR		



- 1: +12 TO +32 VDC POWER INPUT
- 2: INTERNALLY CONNECTED TO PIN 1
- 3: +12 VDC OUT FOR 14V SENDING UNITS ONLY
- 4: N/C
- 5: INPUT (4 - 20 MA PRESSURE SENDING UNIT)
- 6: EL INTERNAL LIGHTING AC INPUT
- 7: EL INTERNAL LIGHTING AC INPUT
- 8: INTERNALLY CONNECTED TO PIN 9
- 9: GROUND

NOTE:
 The gauge units operate with an input voltage range from +12 to +32 VDC.
 However, the UMA E/L back-light driver module type must be selected for the operating system voltage

0 to +14 VDC
 FROM LIGHT DIMMER

0 to +28 VDC
 FROM LIGHT DIMMER

UNLESS OTHERWISE SPECIFIED DIMS ARE IN INCHES. TOLERANCES ARE:

0.X	±0.015	ANGLES	±0.5°	FRACTIONS	± 1/64	63	FMT REV/G
0.XX	±0.010						
0.XXX	±0.005						
INTERPRET GD&T PER ASME 14.5							
ORIG.:	PLM	11-06-00					
DRWN.:	PLM	11-06-00					
ENG.:	PLM	11-06-00					
APPR.:	NAME	MO-DA-YR					

 THIRD ANGLE PROJECTION DO NOT SCALE DRAWING	 MOUNTAIN HIGH E&S CO. REDMOND, OR, USA	[KC] NUMBER OF KEY CHARACTERISTICS IN THIS DRAWING / DOCUMENT PER MH DOC: ESR-001	ELECTRIC OXYGEN PRESSURE GAUGE (SCD)	DWG. # 0EFG6-053-000	REV D	SIZE A
				INV PART NUMBER	CAT ITEM NUMBER	CUSTOMER CODE

REVISION HISTORY			NOTES
REV	MO-DA-YR	ECO NUM	APPR.
B	07-07-01		PLM
C	03-07-02		PLM
D	08-10-05		PLM

ADDED WIRE COLOR FOR REDUCING MODULE CORRECTED & CLARIFIED VOLTAGE OPTIONS REMOVED EXTERNAL PARTS AS NEW VERSIONS HAVE INTERNAL REG.

A: OUTPUT TO GAUGE
B: +10 to +36 VDC
C: NOT USED

CABLE SHIELD IS RECOMMENDED IF LENGTH IS OVER 3 FEET

04 MA. = 0
 20 MA. = FULL-SCALE