

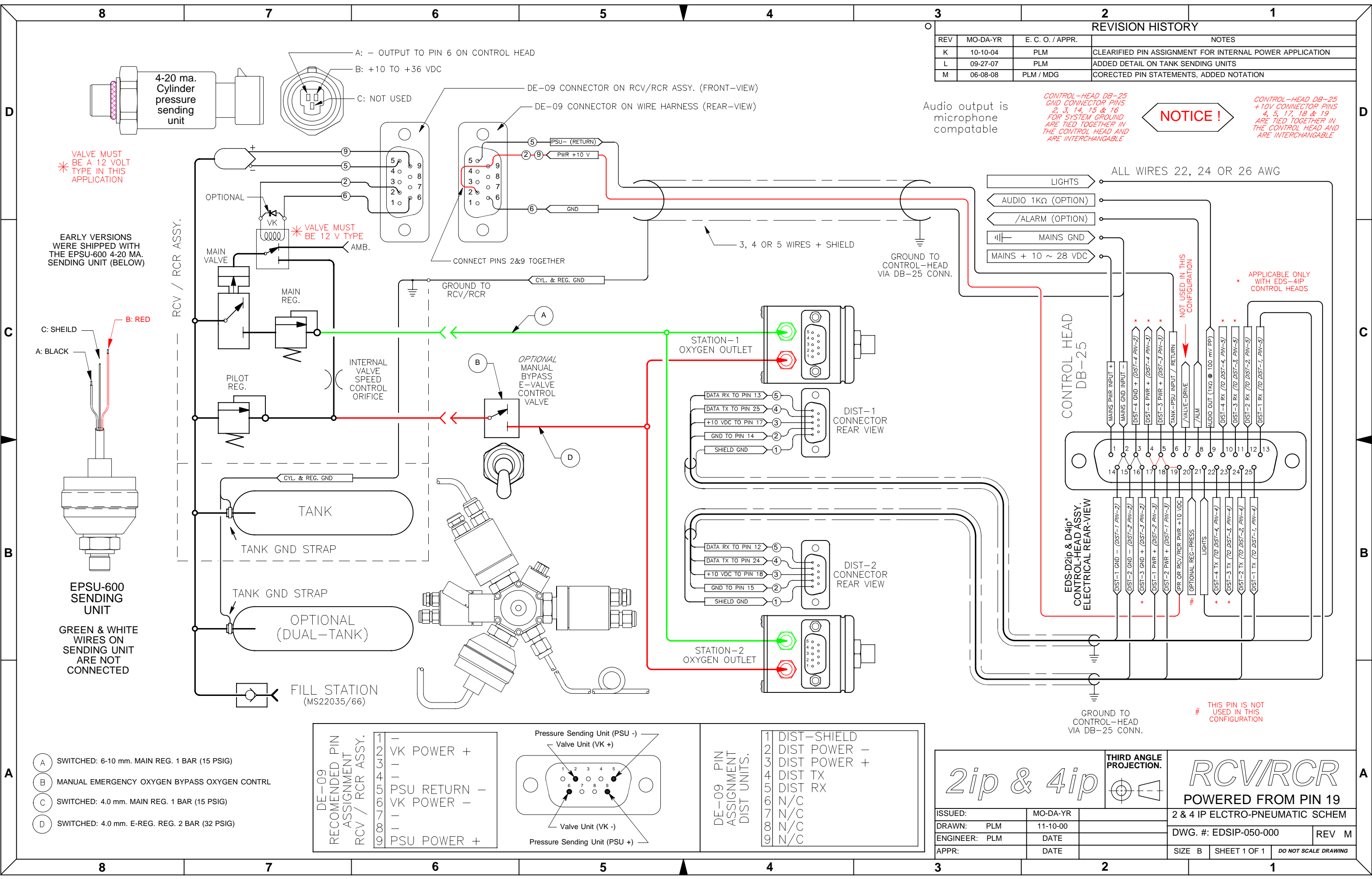
REVISION HISTORY			
REV	MO-DA-YR	E. C. O. / APPR.	NOTES
K	10-10-04	PLM	CLEARIFIED PIN ASSIGNMENT FOR INTERNAL POWER APPLICATION
L	09-27-07	PLM	ADDED DETAIL ON TANK SENDING UNITS
M	06-08-08	PLM / MDG	CORRECTED PIN STATEMENTS, ADDED NOTATION

Audio output is microphone compatible

CONTROL-HEAD DB-25 GND CONNECTOR PINS 2, 3, 14, 15 & 16 FOR SYSTEM GROUND ARE TIED TOGETHER IN THE CONTROL HEAD AND ARE INTERCHANGABLE

**NOTICE!**

CONTROL-HEAD DB-25 +10V CONNECTOR PINS 4, 5, 17, 18 & 19 ARE TIED TOGETHER IN THE CONTROL HEAD AND ARE INTERCHANGABLE

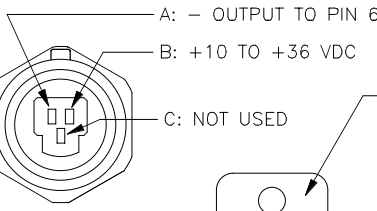


\* VALVE MUST BE A 12 VOLT TYPE IN THIS APPLICATION

EARLY VERSIONS WERE SHIPPED WITH THE EPSU-600 4-20 MA. SENDING UNIT (BELOW)

C: SHIELD  
B: RED  
A: BLACK

EPSU-600 SENDING UNIT  
GREEN & WHITE WIRES ON SENDING UNIT ARE NOT CONNECTED



DE-09 CONNECTOR ON RCV/RCR ASSY. (FRONT-VIEW)  
DE-09 CONNECTOR ON WIRE HARNESS (REAR-VIEW)

CONNECT PINS 2&9 TOGETHER

GROUND TO RCV/RCR

CYL. & REG. GND

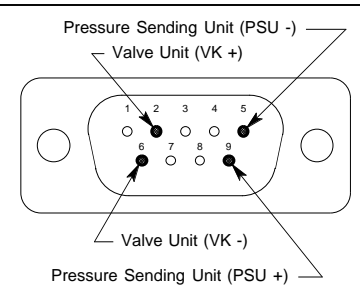
TANK GND STRAP

TANK GND STRAP

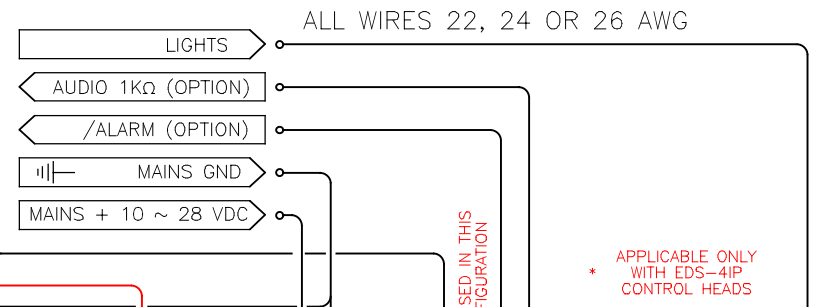
FILL STATION (MS22035/66)

- (A) SWITCHED: 6-10 mm. MAIN REG. 1 BAR (15 PSIG)
- (B) MANUAL EMERGENCY OXYGEN BYPASS OXYGEN CONTRL
- (C) SWITCHED: 4.0 mm. MAIN REG. 1 BAR (15 PSIG)
- (D) SWITCHED: 4.0 mm. E-REG. REG. 2 BAR (32 PSIG)

DE-09 RECOMMENDED PIN ASSIGNMENT RCV / RCR ASSY.	
1	-
2	VK POWER +
3	-
4	-
5	PSU RETURN -
6	VK POWER -
7	-
8	-
9	PSU POWER +



DE-09 PIN ASSIGNMENT DIST UNITS.	
1	DIST-SHIELD
2	DIST POWER -
3	DIST POWER +
4	DIST TX
5	DIST RX
6	N/C
7	N/C
8	N/C
9	N/C



2ip & 4ip		THIRD ANGLE PROJECTION.	RCV/RCR POWERED FROM PIN 19	
DRAWN: PLM		11-10-00	2 & 4 IP ELCTRO-PNEUMATIC SCHEM	
ENGINEER: PLM		DATE	DWG. #: EDSIP-050-000	REV M
APPR:		DATE	SIZE B	SHEET 1 OF 1
DO NOT SCALE DRAWING				