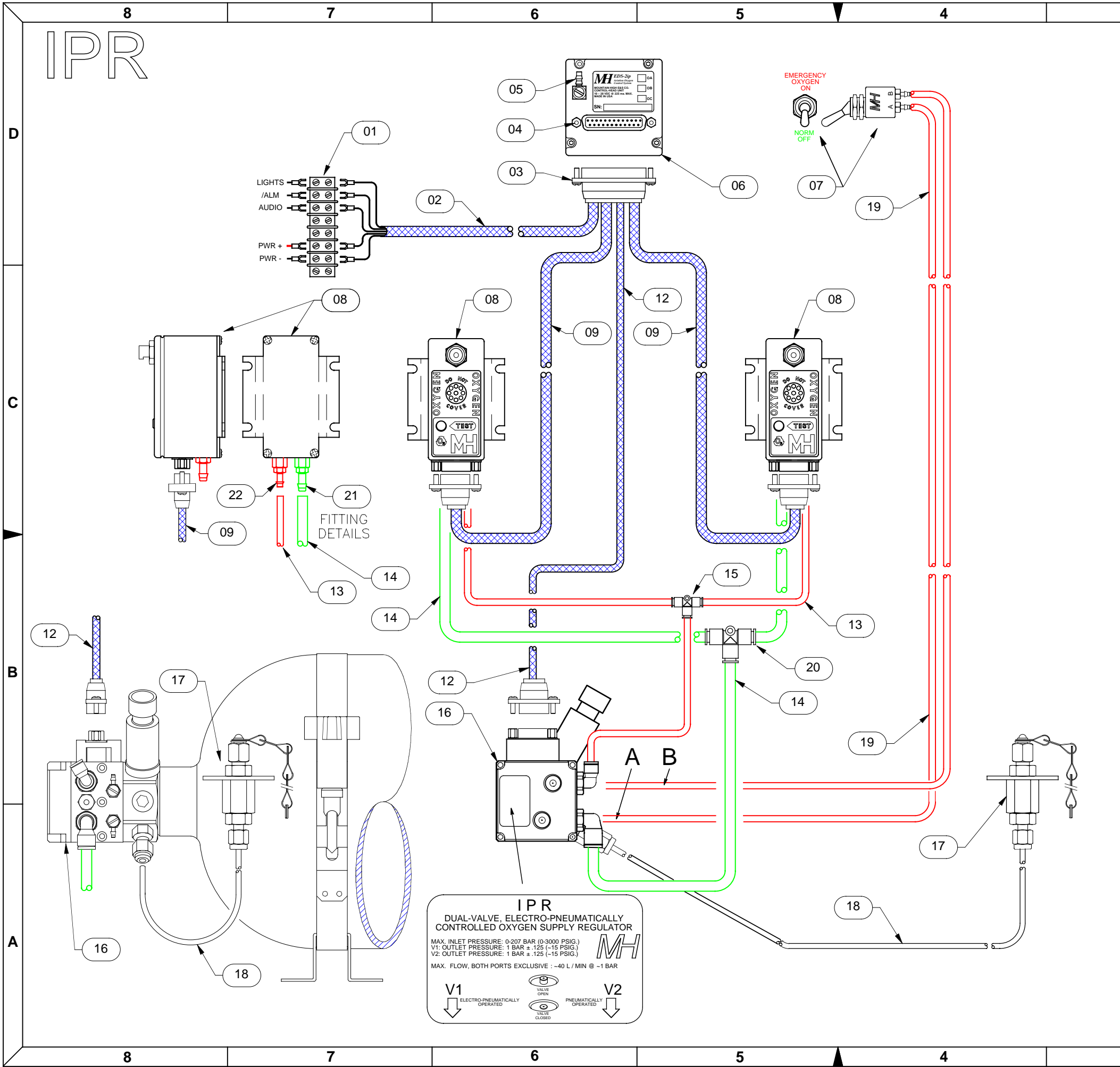


IPR

REVISION HISTORY

REV	DA-MO-YR	E. C. O. / APPR.	NOTES
-	03-09-05	PLM	INITIAL DRAFT
K	02-11-06	PLM	EXPANDED NUMBER OF DRAWING SHEETS
L	03-06-08	PLM	RESTORED ORIGINAL DWG. NUMBER SYSTEM FOR THESE SHEETS

REF	QTY	DESCRIPTION
01	01	MAIN ELECTRICAL SYSTEM INTERFACE WITH AIRCRAFT
02	01	MULTI CONDUCTOR SHIELDED CABLE TO AIRCRAFT & CONTROL HEAD INTERFACE
03	01	HARNESS ASSY. DB-25 CONNECTOR TO CONTROL HEAD
04	01	ELECTRICAL INTERFACE DB-25 CONNECTOR ON CONTROL HEAD
05	01	CABIN PRESSURE (BARO) INTERFACE CONNECTOR ON CONTROL HEAD
06	01	IP SYSTEM CONTROL HEAD ASSEMBLY
07	01	PNEUMATIC EMERGENCY OXYGEN (FULL-FLOW) BYPASS SWITCH (OPTION -01)
08	02	OXYGEN OUTLET DISTRIBUTOR MODULE/ASSY.
09	02	OXYGEN OUTLET DISTRIBUTOR UNIT SHIELDED INTERFACE CABLE
10		
11		
12	01	MULTI-CONDUCTOR SHIELDED INTERFACE CABLE TO RCV/RCR
13	20'	(RED) 4 mm. POLYURETHANE OXYGEN TUBE FROM BYPASS SWITCH (OPTION -01)
14	20'	(GRN) 6 mm. POLYURETHANE MAIN OXYGEN TUBE
15	01	UNION TEE FOR 4 mm POLYURETHANE OXYGEN TUBE (OPTION -01)
16	01	IPR OXYGEN REGULATOR ASSY. WITH OXYGEN CYLINDER
17	01	REMOTE OXYGEN FILL STATION, TUBING & FITTINGS (BULKHEAD TYPE SHOWN)
18	20'	1/8" OD. COPPER, ALUM. OR STAINLESS OXYGEN TUBE TO FILL STATION
19	20'	1/8" 3 mm. POLYURETHANE OXYGEN TUBE TO BYPASS SWITCH
20	01	UNION TEE FOR 6 MM. FOR MAIN POLYURETHANE OXYGEN TUBE
21	01	(GRN) 6 MM. OXYGEN INLET SERVICE BARB
22	01	(RED) 4 MM. OXYGEN INLET SERVICE BARB (EMERGENCY BYPASS)
23		
24		
25		
26		

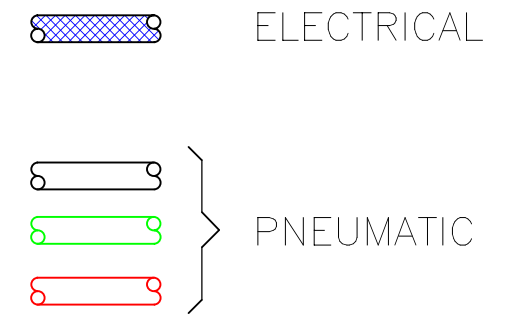


IPR
 DUAL-VALVE, ELECTRO-PNEUMATICALLY CONTROLLED OXYGEN SUPPLY REGULATOR

MAX. INLET PRESSURE: 0-207 BAR (0-3000 PSIG.)
 V1: OUTLET PRESSURE: 1 BAR ± .125 (-15 PSIG.)
 V2: OUTLET PRESSURE: 1 BAR ± .125 (-15 PSIG.)
 MAX. FLOW, BOTH PORTS EXCLUSIVE: ~40 L / MIN @ -1 BAR

MH

V1: ELECTRO-PNEUMATICALLY OPERATED VALVE OPEN (ELECTRO-PNEUMATICALLY OPERATED VALVE CLOSED)
 V2: PNEUMATICALLY OPERATED VALVE OPEN (PNEUMATICALLY OPERATED VALVE CLOSED)



2 ip

THIRD ANGLE PROJECTION

[KC] 00 NUMBER OF KEY CHARACTERISTICS IN THIS DRAWING / DOCUMENT PER MH DOC. ESR-001

MH MOUNTAIN HIGH E&S CO. REDMOND, OR. USA

ISSUED: EDS-2IP PHYSICAL SCHEMATIC-IPR
 DRAWN: PLM
 ENGINEER:
 APPR:

DWG. #: EDSIP-051-001 REV L
 SIZE B SHEET 1 OF 1 DO NOT SCALE DRAWING