

# PCR built-in oxygen system packages

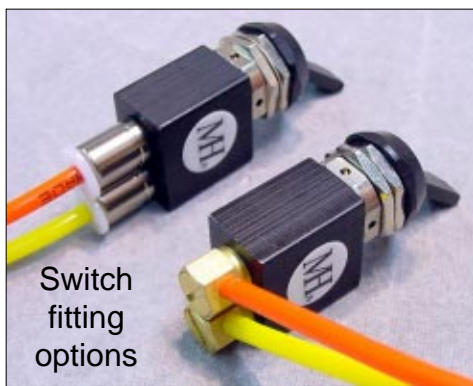
With our PCR Pneumatically Controlled Regulator, you can have a built-in system kit your way

A product of customer requests, the new PCR is a completely self-contained remote-controlled oxygen regulator. It connects directly to any oxygen cylinder with a CGA-540 (USA) or optionally with DIN-477 (European) valve. Flow of oxygen to the user is controlled pneumatically through a set of color-coded pneumatic signal-lines that run to a panel mounted on/off switch. The PCR can be ordered in various phases from just the PCR regulator to complete PCR multi-place built-in aviation oxygen systems.

Once your PCR system is plumbed, you can use any of our oxygen delivery systems including the EDS and operate them at the same time others are using MH3 or MH4 flowmeters. A maximum number of six (6) self-sealing bulkhead outlets can be mounted in many ways to suite your needs. You can add EDS stations at any time.



The PCR regulator directly connects (by hand) to the service/refill port of any oxygen cylinder with the standard CGA-540 (USA) or optionally DIN-477 (Euro) valve allowing the cylinder to be easily removed for refilling or service. An auxiliary port on the rear side of the regulator body (not shown) is provided for an optional remote oxygen fill station and pressure gauge.



Switch fitting options

### The PCR regulator compliments the A34!

Place the A34 between the outlet of the PCR and station outlets to regulate the flow to all stations with cannulas and facemasks.



A standard PCR-4p system kit includes items the following items:

L	Qty	Description
01	1	PCR regulator kit with remote on/off switch & 25' of pneumatic control lines.
02	1	AL-682 cylinder. <b>Optionally upgradeable to KF or CFF cylinders.</b>
03	1	'Ω' or 'A' style CMK for that cylinder (your choice, 'Ω' style shown).
04	1	6 mm. polyurethane tubing kit. (25').
05	3	'T' & 'Y' union kits for the 6 mm. tubing.
06	4	CPC bulkhead style oxygen station outlet kits.
07	4	XCP Breathing stations & tote-bags with your choice of MH3 or MH4 flowmeters.
08	1	SCD and instruction inserts for all items in kit.

The PCR regulator system can be used with virtually any oxygen cylinder with a CGA-540 valve.

Use the EDS, MH3 & MH4 with the PCR regulator system.



Optional remote gauge & fill station kit includes:

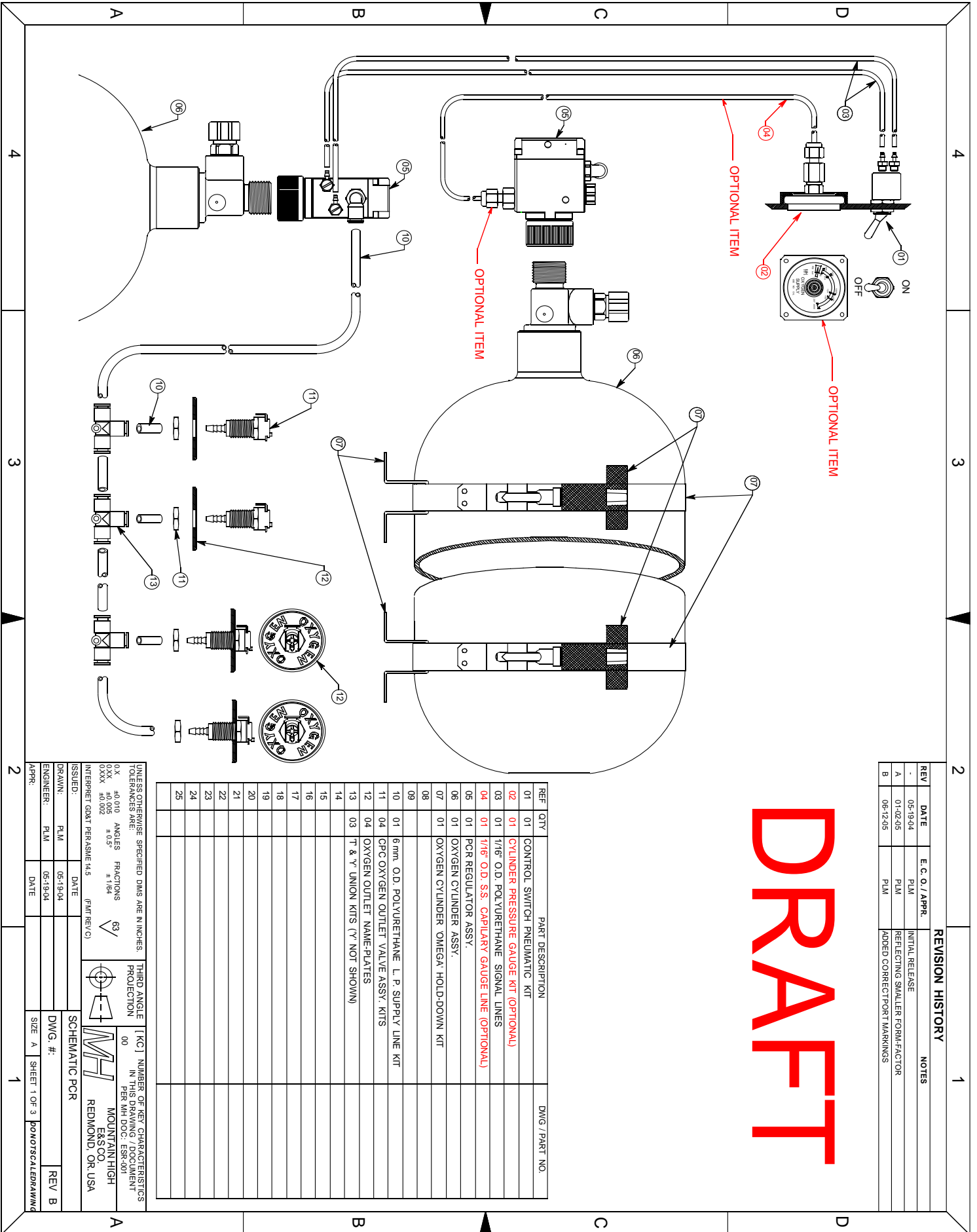
L	Qty	Description
01	1	MH-300 gauge with rear-mount bezel & fitting kit (for AL & KF cylinders)
02	1	25' coil of 1/8" OD copper line tubing kit (Standard issue)
02a	1	25' coil of 1/16" OD stainless-steel 'capillary-line' tubing kit. (Optional upgrade)
03	1	Basic remote oxygen fill-station kit. Can be upgraded to the deluxe fill, (right).
04	1	SCD and instruction inserts for all items in this kit.



Optional MH-300 Remote pressure gauge

Optional Remote Fill Stations





REVISION HISTORY		NOTES
REV	DATE	E. C. O. / APPR.
-	05-19-04	PLM
A	01-02-05	PLM
B	06-12-05	PLM

REF	QTY	PART DESCRIPTION	DWG /PART NO.
01	01	CONTROL SWITCH PNEUMATIC KIT	
02	01	CYLINDER PRESSURE GAUGE KIT (OPTIONAL)	
03	01	1/16" O.D. POLYURETHANE SIGNAL LINES	
04	01	7/16" O.D. S.S. CAPILARY GAUGE LINE (OPTIONAL)	
05	01	PCR REGULATOR ASSY.	
06	01	OXYGEN CYLINDER ASSY.	
07	01	OXYGEN CYLINDER OMEGA HOLD-DOWN KIT	
08			
09			
10	01	6mm. O.D. POLYURETHANE L. P. SUPPLY LINE KIT	
11	04	G.P.C. OXYGEN OUTLET VALVE ASSY. KITS	
12	04	OXYGEN OUTLET NAME-PLATES	
13	03	T & Y UNION KITS (Y NOT SHOWN)	
14			
15			
16			
17			
18			
19			
20			
21			
22			
23			
24			
25			

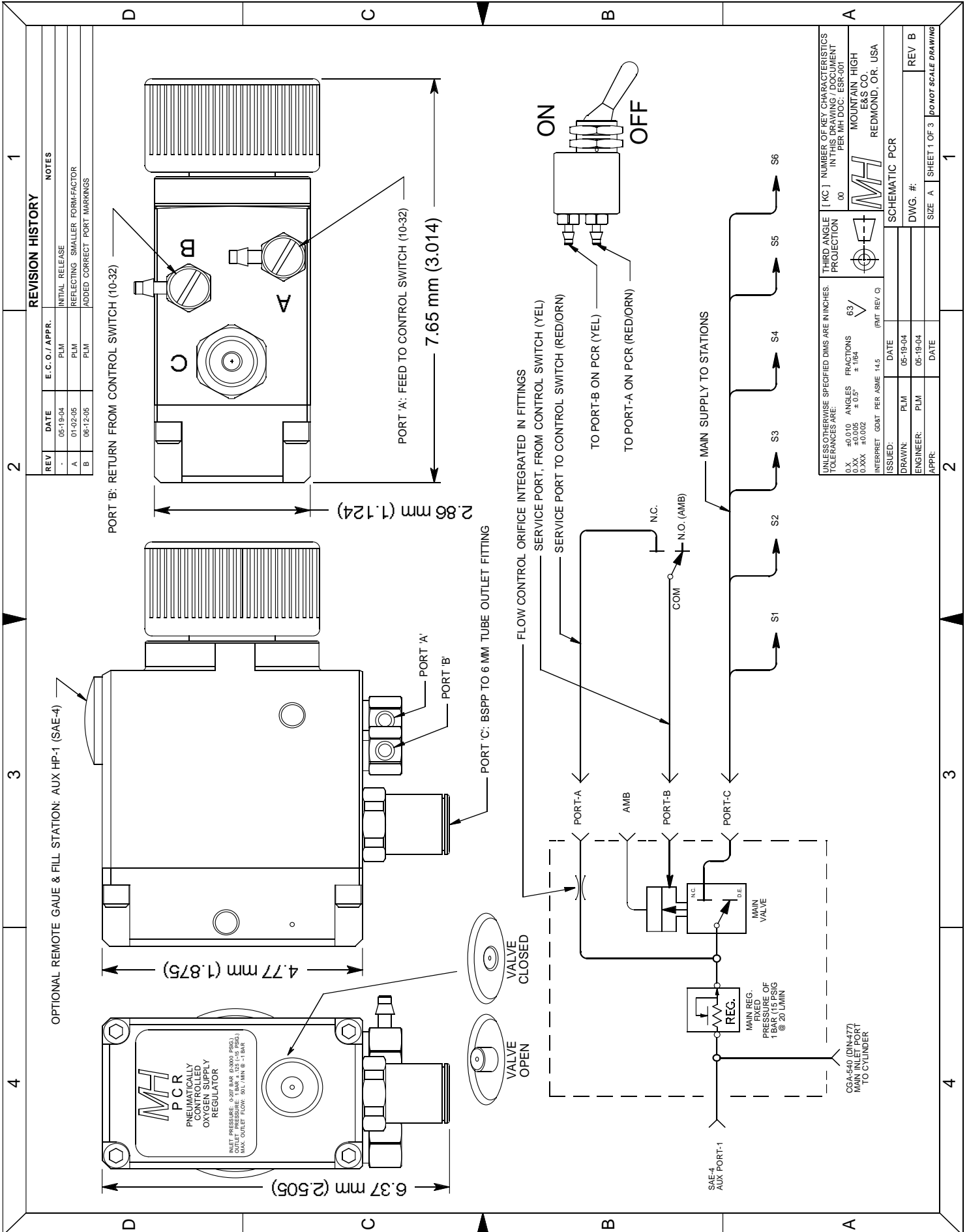
UNLESS OTHERWISE SPECIFIED DIMS ARE IN INCHES.  
 TOLERANCES ARE:  
 0.X ±0.010 ANGLES FRACTIONS 63/  
 0.XXX ±0.005 ±0.5° ±1/64  
 0.XXX ±0.002 (FMT REV.C)  
 INTERPRET GD&T PER ASME 14.5

THIRD ANGLE PROJECTION  
 PROJECTION 00  
 NUMBER OF KEY CHARACTERISTICS IN THIS DRAWING / DOCUMENT PER PART DOC. ESR-001

ISSUED: DATE (FMT REV.C)  
 DRAWN: PLM 05-19-04  
 ENGINEER: PLM 05-19-04  
 APPR: DATE

SCHEMATIC PQR  
 DWG. #: REV B  
 SIZE A SHEET 1 OF 3

REDMOND, OR, USA



**REVISION HISTORY**

REV	DATE	E.C.O./APPR.	INITIAL RELEASE	NOTES
A	05-19-04	PLM	PLM	REFLECTING SMALLER FORM-FACTOR
B	01-02-05	PLM	PLM	ADDED CORRECT PORT MARKINGS

THIRD ANGLE PROJECTION		[KC] NUMBER OF KEY CHARACTERISTICS IN THE PART PER MH DOC. ESR-001	
63		MOUNTAIN HIGH E&S CO. REDMOND, OR. USA	
UNLESS OTHERWISE SPECIFIED DIMS ARE IN INCHES TOLERANCES ARE: 0.XX ±0.010 ANGLES FRACTIONS ± 0.5° ± 1/64 0.XXX ±0.005 ± 0.002 INTERPRET GD&T PER ASME 14.5 (PMT REV Q)		SCHEMATIC PCR	
ISSUED:	DATE	DWG. #:	REV B
DRAWN:	PLM	05-19-04	
ENGINEER:	PLM	05-19-04	
APPR:	DATE	SIZE A	SHEET 1 OF 3





A



B



C

## Order the PCR kit your way.

### A-Kit:

If you already have a cylinder and outlets and would like to add a remotely controlled regulator.

### B-Kit:

If you already have a cylinder, flowmeters, cannulas & face masks, but no system, this kit provides everything else.

### C-Kit:

If you are building and ready to install your system, but are not ready for the breathing stations.

### D-Kit:

This is the entire standard 4-place PCR constant-flow oxygen system kit. It has everything needed for immediate installation and use.

D

