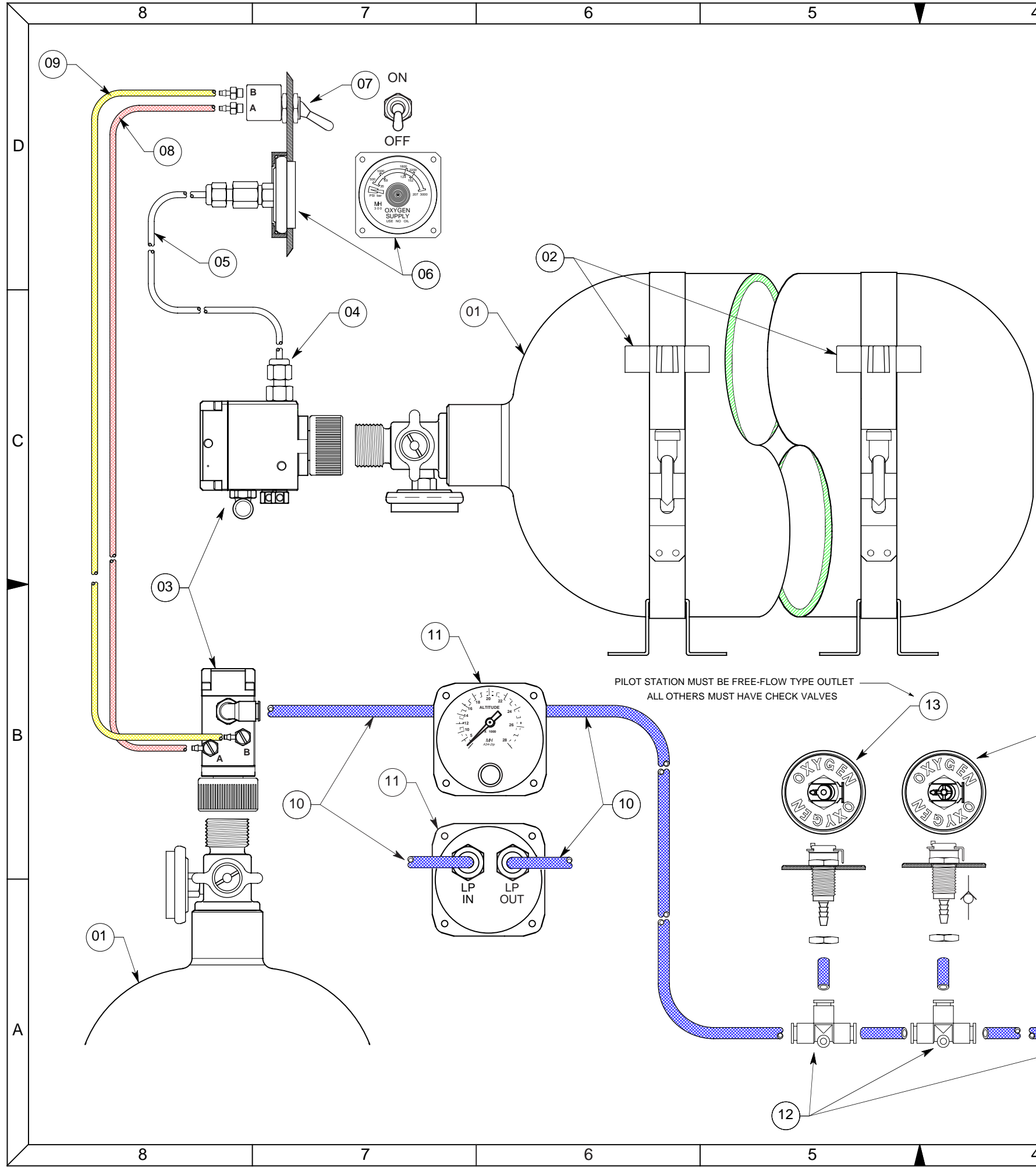


REVISION HISTORY			
REV	DA-MO-YR	E. C. O. / APPR.	NOTES
-	13-02-02	PLM	INITIAL RELEASE
A	17-11-06	PLM	CORRECTED THREAD DETAIL & ADDED PILOT PORT NOTE
B	17-08-07	PLM	ADDED CORRECTED BOM LIST

REF	QTY	PART DESCRIPTION	ITEM, DWG. OR PART NO.
01	01	CYLINDER WITH CGA-540 LP VALVE & GAUGE	00CYL-XXXX-01
02	01	CYLINDER HOLD-DOWN KIT FOR LINE ITEM 01	00CMK-XXXX-02
03	01	PCR (PNEUMATICALLY CONTROLLED REGULATOR KIT)	KPCR0-1000-00
04	01	SAE-4-M TO 1/8" OD COMPRESSION TUBE FITTING	00HDW-0108-00
05	25'	1/8" O.D. COPPER TUBING COIL KIT	19605-0002-00
06	01	MH-300 GAUGE W/BEZEL KIT, 1/8" COMP FITTING	00CPG-0030-00
07	01	PCR / IPR CONTROL SWITCH KIT WITH FITTINGS	APVRO-0150-00
08	25'	1/8" O.D. POLYURETHANE TUBING COIL KIT (A, ORANGE)	19600-0005-00
09	25'	1/8" O.D. POLYURETHANE TUBING COIL KIT (B, YELLOW)	19600-0006-00
10	30'	6MM O.D. POLYURETHANE TUBING COIL KIT	00HDW-0014-30
11	01	A34-2IP OXYGEN REGULATOR UNIT	00BLT-1000-00
12	03	6X6X6 MM O.D. POLYURETHANE TUBING T-UNION	00HDW-1328-30
13	01	BULKHEAD STYLE O2 OUTLET KIT (NO CHECK-VALVE)	00CPC-0014-01
14	03	BULKHEAD STYLE O2 OUTLET KIT (WITH CHECK-VALVE)	00CPC-0018-01



PCR with A34-2ip-G

THIRD ANGLE PROJECTION

[KC] 00 NUMBER OF KEY CHARACTERISTICS IN THIS DRAWING / DOCUMENT PER MH DOC: ESR-001

MH MOUNTAIN HIGH E&S CO. REDMOND, OR. USA

ORIG:	PLM	13-02-02	PCR SCHEMATIC WITH A34-2
DRWN:	PLM	13-02-02	DWG. #: NYA
ENG:	PLM	13-02-02	REV B
APPR:	NAME	DA-MO-YR	SIZE B SHEET 1 OF 1 DO NOT SCALE DRAWING